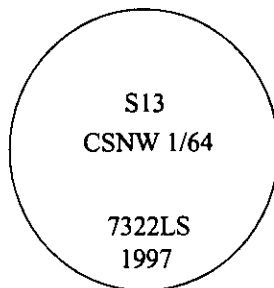


# CERTIFIED CORNER RECORDATION

Corner CSNW 1/64 Sec. 13 T. 35N R. 27W P.M., MT Lincoln County

- I. No previous history.
- II. No evidence found.
- III. Set by survey, a 3/4 in. diam. x 30 ins. long aluminum rod, with a 3 1/4 in. diam. aluminum cap, buried 6 ins. below the surface of dirt road, mkd. as shown.

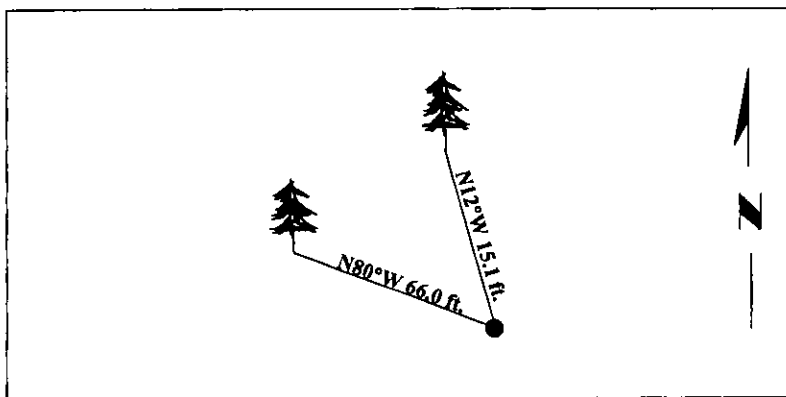


Established two bearing trees:

- A larch, 11 ins. diam., bears N12°W, 15.1 ft. dist., mkd. "CSNW 1/64 S13 BT".
- A larch, 7 ins. diam., bears N80°W, 66.0 ft. dist., mkd. "X" on snowblaze "BT".

Painted bearing trees and attached Land Survey Monument and Bearing Tree signs.

Magnetic Declination: 20° East.



SKETCH OF CORNER

**CERTIFICATION**

I, Rex O. Rice  
certify the information shown herein is true and correct.

Rex O. Rice

I, Alvah F. Hughes  
certify that this Corner Record correctly represents work performed by me or under my direction in compliance with the "Corner Recordation Act", (70-22-101, et seq., M.C.A.)

Alvah F. Hughes  
Signature of Surveyor & Seal

Date: 07/24/97

Reg. No.: 7322LS

Employer: U.S. FOREST SERVICE

**HUGHES 7322 LS REGISTERED LAND SURVEYOR**

Office of Clerk and Recorder, County of Lincoln. This "corner record" was filed for record on 12-26-97 was noted on the cross-index plat and is assigned page No. 10033 in book No. \_\_\_\_\_

Coral M. Cummins, B.S.B.  
County Official

