

INSTRUCTIONS

1. Original and/or subsequent record used to evaluate the corner position.
2. Description of evidence found, note discrepancies in the record, state method of establishing lost or obliterated corners.
3. Description of monument and accessories set to perpetuate the corner position.
4. Sketch of corner, show all pertinent data which can best be shown in a sketch example, corner marking, topography ties, position of accessories, etc.
5. Certification must be signed and sealed by Land Surveyor registered in the State of Montana.
6. Fill in Cross Index & Section Diagram at bottom of sheet.

CERTIFIED CORNER RECORDATION

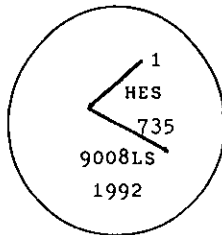
Corner 1 of HES 735 T. 34 N. R. 33 W. P.M.M. Lincoln County

- I. 1917 HES 735 record by Elmer R. Johnson: "Set for Cor. No. 1, a small stone marked with a cross(X) under a quartzite stone 28x9x6 ins., 18 ins. in the ground, marked 1 H.E.S. 735 on SE face and a cross (x) on top for exact corner point."

No bearing trees available and pits impracticable, therefore raise a mound of stone. 4 ft. base, 2 ft. high SE of corner.

- II. No corner monuments or accessories were found

- III. At position established by Grant Boundry adjustment between Cors. 6 and 8 ; set a 2 1/2 ins. by 30ins. long aluminum rod, 24 ins. in the ground , with 3 1/4 ins. diam., U.S.D.A., Forest Service aluminum cap marked as shown.



Established two new bearing trees:

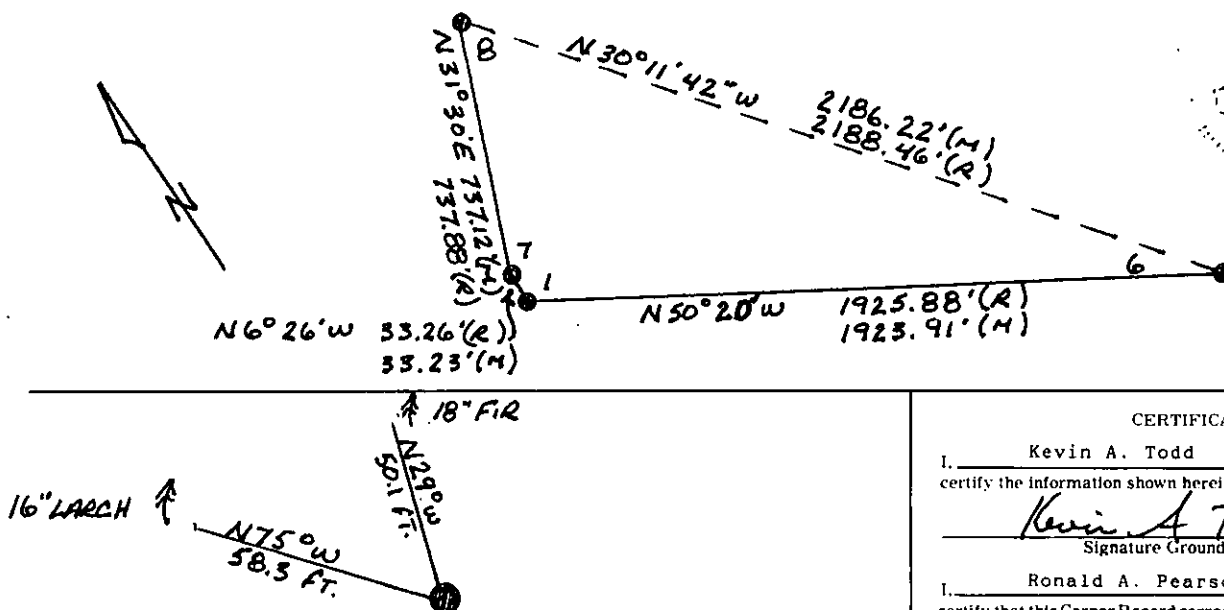
A larch, 16 ins., diam., bears N75° W, 58.3 ft., dist., mkd. 1 HES 735 BT

A Fir, 18 ins. diam., bears N29° W, 50.1 ft., dist., mkd. 7 HES 735 BT (Used a common tree with corner 7)

Painted red bands around the bearing trees and attached "Land Survey Monument" and "Bearing Tree" signs.

Set a galvanized steel gaurd post with "Land Survey Marker" and Property Boundary: decals, S50° E, 3 ft.

Magnetic declination: 20° East



CERTIFICATION

I, Kevin A. Todd
certify the information shown herein is true and correct.

Kevin A. Todd
Signature Ground Party Chief

I, Ronald A. Pearson
certify that this Corner Record correctly represents work performed by me or under my direction in compliance with the "Corner Recordation Act" (70-22-101 et seq., M.C.A.)

Ronald A. Pearson
Signature of Surveyor & Seal

Date: 11/16/92 Reg. No. 9008LS

Employer: U. S. FOREST SERVICE

SKETCH OF CORNER

Office of Clerk and Recorder, County of Lincoln. This "corner record" was filed for record on 12-7-92 was noted on the cross-index plat and is assigned page No. 5124, in book No. Coral M. Cummings

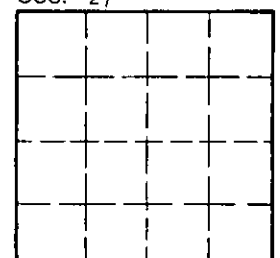
County Official

1 HES 735

34 N 33W

Cross Index No. T. R. PMM

Sec. 27



• - corner this sheet