

## INSTRUCTIONS

1. Original and/or subsequent record used to evaluate the corner position.
2. Description of evidence found, note discrepancies in the record, state method of establishing lost or obliterated corners.
3. Description of monument and accessories set to perpetuate the corner position.
4. Sketch of corner, show all pertinent data which can best be shown in a sketch example, corner marking, topography ties, position of accessories, etc.
5. Certification must be signed and sealed by Land Surveyor registered in the State of Montana.
6. Fill in Cross Index & Section Diagram at bottom of sheet.

## CERTIFIED CORNER RECORDATION

7 of HES 1063  
 Corner 9 of HES 735 T. 34 N., R. 33 W., P.M.M. Lincoln County

- I. 1917 HES 735 record by Elmer R. Johnson: "Set for Cor. No. 9, a small stone marked with a cross(X) under a granite stone 24x9x4 ins., 14 ins. in the ground, marked 9 H.E.S. 735 on SW face and a cross (x) on top for exact corner point.

From which:

A cross (x) on a larch tree 9 ins. diam., bears S89°W., 76 lks. dist.

A cross (x) on a larch tree 30 ins. diam., bears S36°15'W., 53 lks. dist; each blazed and scribed 9 HES 735 B.T.

Raise a mound of earth 4 ft. base, 2 ft. high, SW of the corner.

1921 HES 1063 record by Grant Higgins: To Cor. No. 9 of HES 735 (patented) which is a granite stone, 10x9x4 ins. diam., above the ground, marked and witnessed as described by the surveyor general. I adopt this Cor. for Cor. No. 7 of this survey and mark it 7 HES 1063 on SE face. From the cross (X) on top is the exact corner point.

From which:

A cross (X) on a larch tree, 9 ins. diam., bears S89°W., 76 lks. (50.16 ft.) dist., (old B.T.)

A cross (X) on a larch tree, 30 ins. diam., bears S36°15'W., 53 lks. (34.98 ft.) dist., (old B.T.): each blazed and scribed 7 HES 1063 B.T.

Raise a small mound of earth, 4 ft. base, 2 ft. high, SE of corner.

- II. Found a firmly set stone 10x6 ins., protruding 12 ins. out of the ground, mkd. 7 HES 1063 on SE face and 9 HES 735 on SW face.

From which:

A larch stump, 36 ins. diam., bears S39°W., 35 ft. dist., with visible scribing

A down tree, 14 ins. diam., bears West, 50 ft. dist., with visible scribing.

A mound of stone 4 ft. base, 2 ft. high, SE of corner. (RCD. mound of earth).

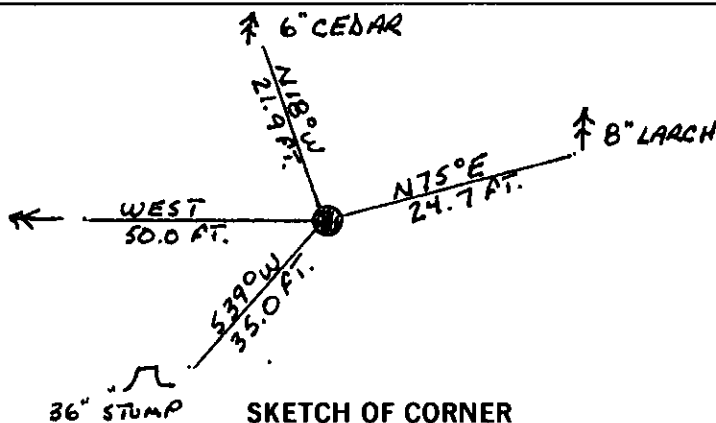
- III. Established two new bearing trees:

A larch 8 ins. diam., bears N75°E., 24.7 ft. dist. mkd. 7 HES 1063 B.T.

A cedar 6 ins. diam., bears N18°W., 21.9 ft. dist. mkd. 9 HES 735 B.T.

Painted red bands around the bearing trees and attached "Land Survey Monument" and "Bearing Tree" signs. Set a galvanized steel gaurd post with "Land Survey Marker" and "Property Boundary" decals, N80°W, 3 ft.

Magnetic declination: 20° East



## CERTIFICATION

I, Kevin A. Todd, Registered Surveyor, certify the information shown hereon is true and correct.  
 Signature Ground Party Chief

I, Ronald A. Pearson, certify that this Corner Record correctly represents work performed by me or under my direction in compliance with the "Corner Recordation Act" (70-22-101, et seq., M.C.A.)

Signature of Surveyor & Seal

Date: 11/16/92 Reg. No. 9008LS

Employer: U.S. FOREST SERVICE

Office of Clerk and Recorder, County of Lincoln. This "corner record" was filed for record on 12-7-92 was noted on the cross-index plat and is assigned page No. 5122, in book No. Coral M. Cummings

County Official

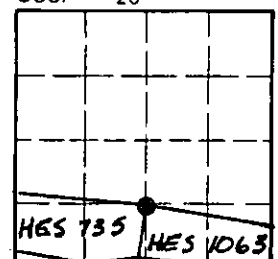
9 HES 735

34 N

33W

Cross Index No. T. R. PMM

Sec. 26



• - corner this sheet