

INSTRUCTIONS

1. Original and/or subsequent record used to evaluate the corner position.
2. Description of evidence found, note discrepancies in the record, state method of establishing lost or obliterated corners.
3. Description of monument and accessories set to perpetuate the corner position.
4. Sketch of corner, show all pertinent data which can best be shown in a sketch example, corner marking, topography ties, position of accessories, etc.
5. Certification must be signed and sealed by Land Surveyor registered in the State of Montana.
6. Fill in Cross Index & Section Diagram at bottom of sheet.

CERTIFIED CORNER RECORDATION

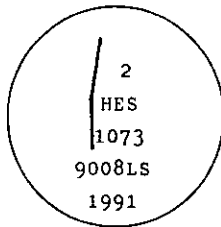
Corner 2 of HES 1073 T. 34 N. R. 33 W. Lincoln County

- I. 1921 HES 1073 record by Grant Higgins: "Established Cor. No. 2 as follows: Placed a small stone, marked with a cross(x) under a trap stone, 24x10x8 ins., 14 ins. in the ground, marked 2 HES 1073 on NE face and a cross(x) on top for the exact corner point.

No bearings available; pits impracticable. Raise a mound of earth, 4 ft. base, 2 ft. high, NE of Cor."

- II. Found original corner stone, 10x12x20 ins., mkd. 2 HES 1073, laying loose in a dozer pile.

- III. At position determined by the Grant Boundary Adjustment between found corners 1 and 3, set a 2 1/2 ins. diam, 30 ins. long alum. pipe, 24 ins. in the ground with alum. cap mkd. as shown



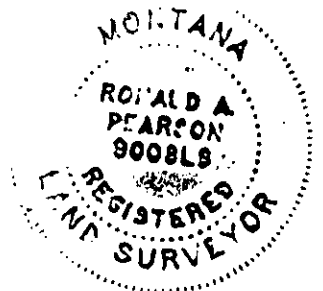
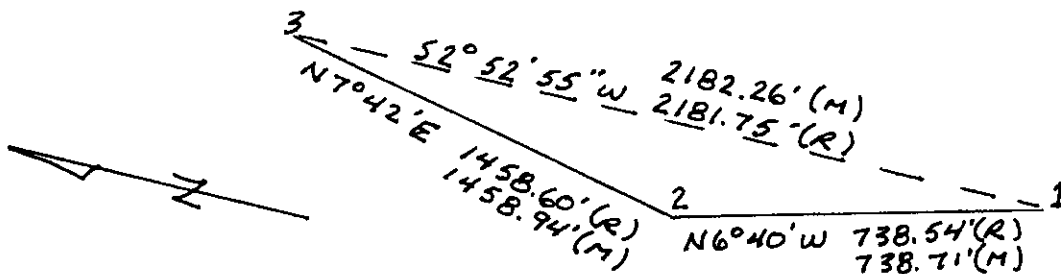
Established two new bearing trees:

A cedar, 7 ins. diam., bears N57°W, 41.6 ft. dist., mkd. 2 HES 1073 BT.

A larch, 20 ins. diam., bears S51°W, 18.6 ft. dist., mkd. 2 HES 1073 BT.

Painted red bands around the bearing trees and attached "Land Survey Monument" and "Bearing Tree" signs.

Set a galvanized steel guard post with "Land Survey Marker" and "Property Boundary" decals, S7°W, 3 ft. Magnetic declination: 20° East



CERTIFICATION

I, Kevin A. Todd

certify the information shown herein is true and correct.

Kevin A. Todd
Signature Ground Party Chief

I, Ronald A. Pearson

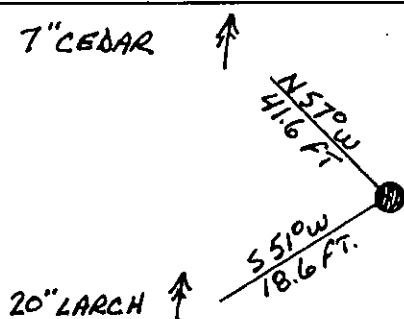
certify that this Corner Record correctly represents work performed by me or under my direction in compliance with the "Corner Recordation Act" (70-22-101, et seq., M.C.A.)

Ronald A. Pearson
Signature of Surveyor & Seal

Date: 8/11/92 Reg. No. 9008 LS

Employer: U.S. FOREST SERVICE

SKETCH OF CORNER



Office of Clerk and Recorder, County of Lincoln. This "corner record" was filed for record on 12-7-92 was noted on the cross-index plat and is assigned page No. 5111, in book No. Coral M. Cummings

County Official

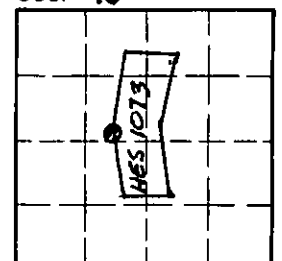
2 HES 1073

34 N

33 W

Cross Index No. _____ T. _____ R. _____ PMM

Sec. 16



• - corner this sheet