

INSTRUCTIONS

1. Original and/or subsequent record used to evaluate the corner position.
2. Description of evidence found, note discrepancies in the record, state method of establishing lost or obliterated corners.
3. Description of monument and accessories set to perpetuate the corner position.
4. Sketch of corner, show all pertinent data which can best be shown in a sketch example, corner marking, topography ties, position of accessories, etc.
5. Certification must be signed and sealed by Land Surveyor registered in the State of Montana.
6. Fill in Cross Index & Section Diagram at bottom of sheet.

CERTIFIED CORNER RECORDATION

Corner COR. 8 of HES 407 T. 34 N. R. 33 W. P.M.M. Lincoln County

I. 1915 H.E.S. original record by Elmer R. Johnson: Set for Cor. No. 8, a quartzite stone, 25x10x6 ins., 15 ins. in the ground, marked 8 HES 407 on NE face, and a cross (x) on top for the exact corner point, from which:

A cross (x) on a larch, 6 ins. diam., bears $S10^{\circ}13'E$, 48 lks. dist.

A cross (x) on a larch, 6 ins. diam., bears $N15^{\circ}04'E$, 47 lks. dist.

Each blazed and scribed 8 HES 407 BT.

Raise a mound of stone, 4 ft. base, 2 ft. high, NE of corner.

II. Found a 8x12 in. quartzite stone, firmly set, 8 ins. above the ground, mkd. 8 HES 407 on NE face from which:

A larch, bears $N17^{\circ}E$, 30.9 ft. dist., overgrown blaze.

A dead larch, bears $S10^{\circ}E$, 31.2 ft. dist., overgrown blaze.

III. Established two new bearing trees due to future road construction which may destroy this corner.

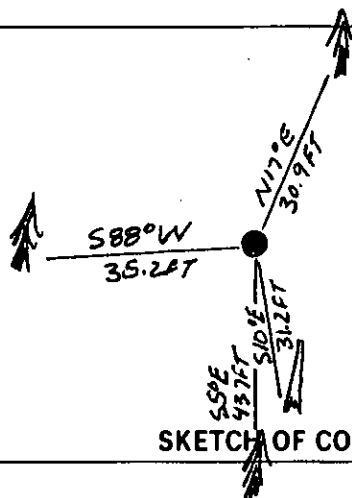
A cedar, 9 ins. diam., bears $S5^{\circ}E$, 43.7 ft. dist., mkd. 8 HES 407 BT.

A larch, 13 ins. diam., bears $S88^{\circ}W$, 35.2 ft. dist., mkd. 8 HES 407 BT.

Painted red bands around the bearing trees and attached Land Survey Monument and Bearing Tree signs.

Set a 6 ft. galvanized steel guard post with Land Survey Marker and Property Boundary decals, SE, 3 ft.

Magnetic declination: 20° East.



SKETCH OF CORNER

CERTIFICATION

I, Kevin Todd
certify the information shown herein is true and correct.

Kevin A Todd
Signature Ground Party Chief

I, Alvah F. Hughes
certify that this Corner Record correctly represents work performed by me or under my direction in compliance with the "Corner Recordation Act" (70-22-101, et seq., M.C.A.)

Alvah F. Hughes
Signature of Surveyor & Seal

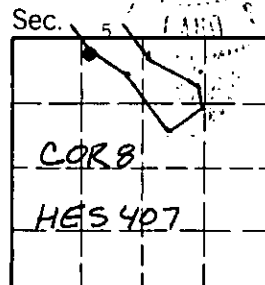
Date: 04/08/92 Reg. No. 7322-LS 7322-LS

Employer: U.S. FOREST SERVICE

Office of Clerk and Recorder, County of Lincoln. This "corner record" was filed for record on 5-4-92 was noted on the cross-index plat and is assigned page No. 5075, in book No. _____

Coral M. C.
County Official

8 HES 407 34 N. 33 W
Cross Index No. _____ T. _____ R. _____ PMM



• - corner this sheet