

## INSTRUCTIONS

1. Original and/or subsequent record used to evaluate the corner position.
2. Description of evidence found, note discrepancies in the record, state method of establishing lost or obliterated corners.
3. Description of monument and accessories set to perpetuate the corner position.
4. Sketch of corner, show all pertinent data which can best be shown in a sketch example, corner marking, topography ties, position of accessories, etc.
5. Certification must be signed and sealed by Land Surveyor registered in the State of Montana.
6. Fill in Cross Index & Section Diagram at bottom of sheet.

## CERTIFIED CORNER RECORDATION

Corner Cor. 7 HES 845 T. 34 N. R. 33 W. P.M.M. Lincoln County

I. 1917 H.E.S. original record by E. R. Johnson: Set a small stone, marked with a cross (X), under a granite stone, 24x10x6 ins., 14 ins. in the ground, marked 7 HES 845 on the N. face and a cross (X) on the top for exact point, from which

A cross (X) on a white pine tree, 6 ins. diam., bears N.16°00'E., 19 lks. dist.

A cross (X) on a white pine tree, 6 ins. diam., bears N.27°30'W., 32 lks. dist; each blazed and scribed 7 HES 845 B.T.

Raise a mound of earth 4 ft. base, 2 ft. high, N. of corner.

1959 Corner Card by T.P. Farbo: Solid Iron rod 2 1/2 ins. diam., 6 ins. above ground surrounded by a pile of 8 rocks, bears S.48°W., 25 ft. from Yaak Hwy. 92.

No evidence of original B.T.s.

II. I found a 1 in. diam. iron pin, slightly bent over in the ditch line of Yaak Hwy 92. I find no evidence of the original bearing trees as one falls in the power line right of way and the other falls in the hwy.. The found iron pin fits record bearing and dist. from corner 6 HES 845, compared with measurements from a recent USFS contract survey.

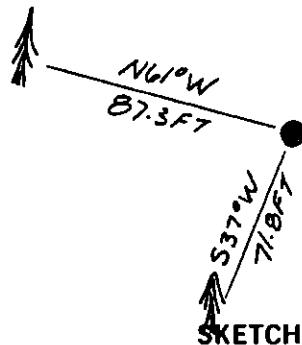
III. I accept the 1 in. diam. iron pin as found for corner 7 of HES 845 and in anticipation of the reconstruction of Yaak Rd. 92, I do not remonument the corner.

I established two new bearing trees beyond the R/W limits.

A cedar, 8 ins. dia., bears S.37°W., 71.8 ft. dist., mkd. 7 HES 845 BT.

A fir, 8 ins. dia., bears N.61°W., 87.3 ft. dist., mkd. 7 HES 845 BT.

Painted red bands around the bearing trees and attached Land Survey Monument and Bearing Tree signs.  
Magnetic declination: 20° East.



SKETCH OF CORNER

CERTIFICATION  
Steven A. Boyer

I, Steven A. Boyer, certify the information shown herein is true and correct.

Signature Ground Party Chief  
Alvah F. Hughes

I, Alvah F. Hughes, certify that this Corner Record correctly represents work performed by me or under my direction in compliance with the "Corner Recordation Act" (70-22-101, et seq., M.C.A.).

Date: 04/08/92 Reg. No. 7322 LS

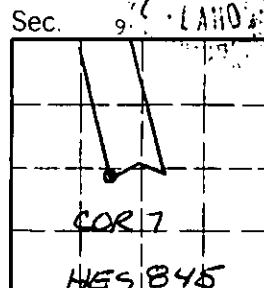
Employer: U.S. FOREST SERVICE

Office of Clerk and Recorder, County of Lincoln. This "corner record" was filed for record on May 4, 1992 was noted on the cross-index plat and is assigned page No. 5074, in book No. Corral M. Cummings

County Official

7 HES 845 34 N 33 W

Cross Index No. T. R. PMM



• - corner this sheet