

INSTRUCTIONS

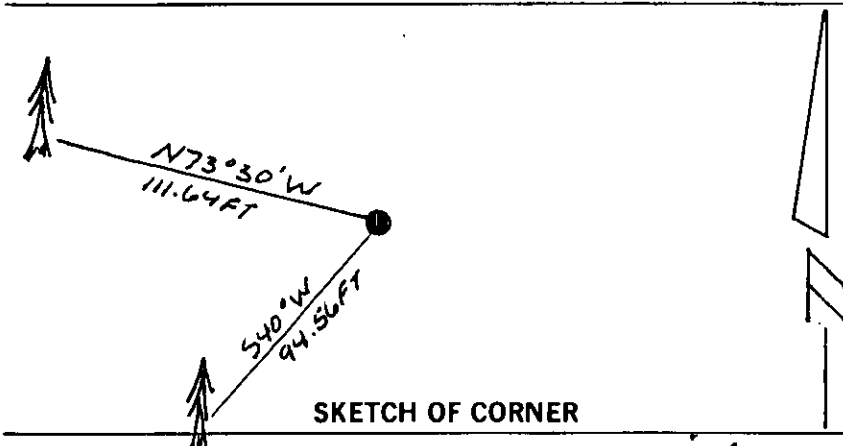
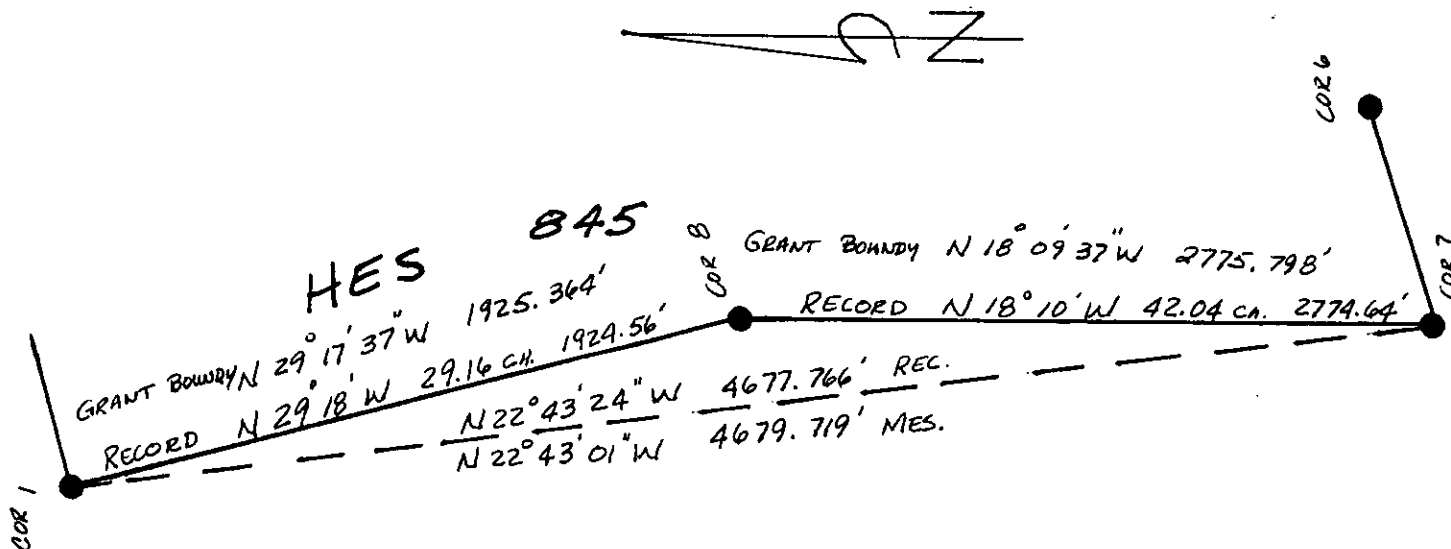
1. Original and/or subsequent record used to evaluate the corner position.
2. Description of evidence found, note discrepancies in the record, state method of establishing lost or obliterated corners.
3. Description of monument and accessories set to perpetuate the corner position.
4. Sketch of corner, show all pertinent data which can best be shown in a sketch example, corner marking, topography ties, position of accessories, etc.
5. Certification must be signed and sealed by Land Surveyor registered in the State of Montana.
6. Fill in Cross Index & Section Diagram at bottom of sheet.

CERTIFIED CORNER RECORDATION

Corner Cor. 8 HES 845 T. 34 N. R. 33 W. Lincoln County

- I. 1917 H.E.S. original record by E. R. Johnson: Set a small stone, marked with a cross (X), under a granite stone 24x12x8 ins., 14 ins. in the ground, marked 8 HES 845 on NE face and a cross (X) on top for exact corner point, from which
- A cross (X) on a white pine tree 6 ins. diam., bears S. $34^{\circ}00'W$, 36 lks. dist.
 - A cross (X) on a black pine tree 6 ins. diam., bears N. $40^{\circ}00'E$, 49 lks. dist., each blazed and scribed 8 HES 845 B.T.
 - Raise a mound of earth 4 ft. base, 2 ft. high, NE of corner.
- II. I found no evidence of the either the original corner monument, as its position lies on the shoulder of Yaak Hwy. 92, or original bearing trees, due to power line and road clearing.
- III. I establish the new position for corner 8 by proportion, using the Grant Boundary method, between the original corners 1 and 7.
- I set a 1/2 in. diam., by 18 in. long iron rebar with a yellow plastic cap, mkd. 7322 LS, 4 ins. beneath the surface of Yaak Rd. 92 in anticipation of the reconstruction of the Yaak Road, which will destroy this monument.
- I establish two new bearing trees,
- A cedar, 9 ins. dia., bears S. $40^{\circ}W$, 94.56 ft. dist., mkd. 8 HES 845 BT.
 - A larch, 12 ins. dia., bears N. $73^{\circ}30'W$, 111.64 ft. dist., mkd. 8 HES 845 BT.

No galvanized steel guard post set. Painted red bands around the bearing trees and attached Land Survey Monument and Bearing Tree signs.
Magnetic declination: 20° East.



SKETCH OF CORNER

CERTIFICATION

I, Kenneth Kern
certify the information shown here is true and correct.

Kenneth Kern
Signature Ground Party Chief

I, Alvah F. Hughes
certify that this Corner Record correctly represents work performed by me or under my direction in compliance with the Corner Recordation Act (70-22-101, et seq. M.C.A.).

Alvah F. Hughes
Signature of Surveyor & Seal

Date: 4/08/92 Reg. No. 7322 LS

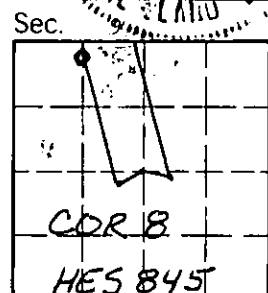
Employer: U.S. FOREST SERVICE

Office of Clerk and Recorder, County of Lincoln. This "corner record" was filed for record on May 4, 1992 was noted on the cross-index plat and is assigned page No. 5073, in book No. Coral M. Cummings

County Official

8 HES 845 34 N 33 W

Cross Index No. T. R. PMM



• - corner this sheet