

INSTRUCTIONS

1. Original and/or subsequent record used to evaluate the corner position.
2. Description of evidence found, note discrepancies in the record, state method of establishing lost or obliterated corners.
3. Description of monument and accessories set to perpetuate the corner position.
4. Sketch of corner, show all pertinent data which can best be shown in a sketch example, corner marking, topography ties, position of accessories, etc.
5. Certification must be signed and sealed by Land Surveyor registered in the State of Montana.
6. Fill in Cross Index & Section Diagram at bottom of sheet.

CERTIFIED CORNER RECORDATION

Corner 6 of HES 1073 T. 34 N. R. 33 W. Lincoln County

I. 1921 HES original record by Grant Higgins: "Cor. No. 6 of this survey as follows:

Place a small stone, marked with a cross (X) under a sandstone 24x8x7 ins., 14 ins. in the ground, mkd. 6 HES 1073 on NW. face and a cross on top for the exact corner point.

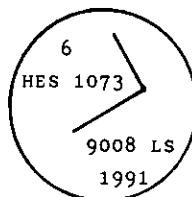
from which:

- A cross (X) on a white pine tree, 4 ins. diam., bears S.50°45'E., 52 lks. dist.
- A cross (X) on a white pine tree, 4 ins. diam., bears S.59°57'W., 31 lks. dist.
- each blazed and scribed 6 HES 1073 Bt.
- Raise a mound of stone 4 ft. base, 2 ft. high, NW. of corner.

II. Found no monument. Corner position falls in cleared right-of-way of Yaak hwy. (road #92).

A stump, 18 ins. diam., mkd. 6 HES 1073 BT. (Record bearing tree)
Other bearing tree destroyed by road construction.

III. At record bearing and distance (N59°57'E, 20.46 ft.) from found bearing tree, set a 3/4 ins. diam., 30 ins. long aluminum rod, 24 ins. in the ground with aluminum cap mkd. as shown:



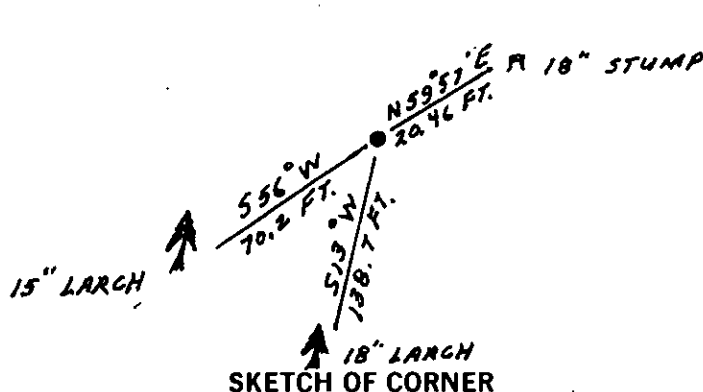
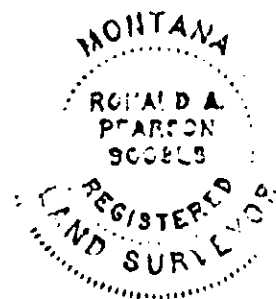
Corner position checked by survey. Established two new bearing trees:

- A larch, 18 ins. diam., bears S.13°W., 138.7 ft. dist., mkd. 6 HES 1073 BT.
- A larch, 15 ins. diam., bears S.56°W., 70.2 ft. dist., mkd. 6 HES 1073 BT.

Painted red bands around the bearing trees and attached "Land Survey Monument" and "Bearing Tree" signs.

Set a galvanized steel guard post with "Land Survey Marker" and "Property Boundary" decals, S.83°W., 3 ft. dist. from corner.

Magnetic declination: 20° East



SKETCH OF CORNER

CERTIFICATION

I, Kevin A. Todd
certify the information shown herein is true and correct.

Kevin A. Todd
Signature Ground Party Chief

I, Ronald A. Pearson
certify that this Corner Record correctly represents work performed by me or under my direction in compliance with the "Corner Recordation Act" (70-22-101, et seq., M.C.A.)

Ronald A. Pearson
Signature of Surveyor & Seal

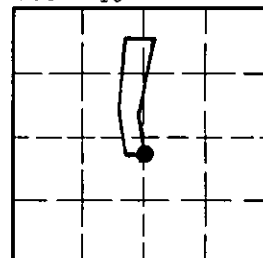
Date: 11/26/91 Reg. No. 9008 LS

Employer: U.S. FOREST SERVICE

Office of Clerk and Recorder, County of Lincoln. This "corner record" was filed for record on Jan 16, 1992 was noted on the cross-index plat and is assigned page No. 4658, in book No. Corral M. Cummings

Cross Index No. 6 HES 1073 T. 34 N. R. 33 W. PMM

Sec. 16



• - corner this sheet