

INSTRUCTIONS

1. Original and/or subsequent record used to evaluate the corner position.
2. Description of evidence found, note discrepancies in the record, state method of establishing lost or obliterated corners.
3. Description of monument and accessories set to perpetuate the corner position.
4. Sketch of corner, show all pertinent data which can best be shown in a sketch example, corner marking, topography ties, position of accessories, etc.
5. Certification must be signed and sealed by Land Surveyor registered in the State of Montana.
6. Fill in Cross Index & Section Diagram at bottom of sheet.

CERTIFIED CORNER RECORDATION

Corner 9 of MS 5024 T. 34 N. R. 33 W. Lincoln County

I. 1896 MS original record by Abram L. Jaqueth: "Eight Course, N. 58° 35' W. Loc. Cor. set a post 6 ins. square, 6 ft. long, 2 ft. deep, marked 9-5024 for Cor. No. 9.

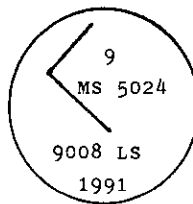
A blazed hemlock tree, 12 ins. in diam., marked BT 9-5024, bears N. 7° 00' E., 5 ft. dist.

A blazed tamarack tree, 28 ins. in diam., marked 9-5024 BT, bears S. 12° 00' W., 24 ft. dist."

II. Found a 2 ft. diam., 1 ft. high mound of stone with a hole and rotten wood in the center.

A larch stump, 28 ins. diam., bears S. 16° W., 25.0 ft. dist, burnt face.

III. At determined rotten wood post remains, set a 3/4 ins. diam., 30 ins long aluminum rod, 24 ins. in the ground with aluminum cap mkd. as shown:



Established two new bearing trees:

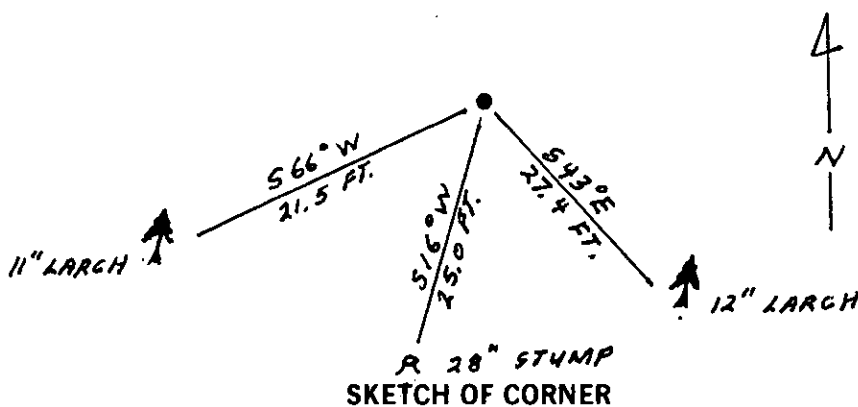
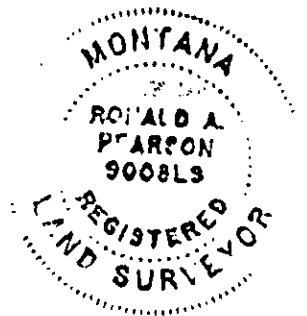
A larch, 12 ins. diam., bears S. 43° E., 27.4 ft. dist., mkd. 9 MS 5024 BT.

A larch, 11 ins. diam., bears S. 66° W., 21.5 ft. dist., mkd. 9 MS 5024 BT.

Painted red bands around the bearing trees and attached "Land Survey Monument" and "Bearing Tree" signs.

Set galvanized a steel guard post with "Land Survey Marker" and "Property Boundary" decals, N. 13° E., 3 ft. dist. from corner.

Magnetic declination: 20° East



CERTIFICATION

I, Kevin A. Todd
certify the information shown herein is true and correct.

Kevin A. Todd
Signature Ground Party Chief

I, Ronald A. Pearson
certify that this Corner Record correctly represents work performed by me or under my direction in compliance with the "Corner Recordation Act" (70-22-101, et seq., M.C.A.)

Ronald A. Pearson
Signature of Surveyor & Seal

Date: 11/26/91 Reg. No. 9008 LS

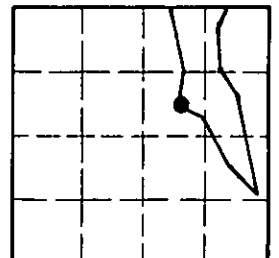
Employer: U.S. FOREST SERVICE

Office of Clerk and Recorder, County of Lincoln. This "corner record" was filed for record on Jan 16, 1992 was noted on the cross-index plat and is assigned page No. 4652, in book No. _____

Carol M. Cummings
by _____
Clerk and Recorder

Cross Index No. _____ T. _____ R. _____ PMM

Sec. 21



• - corner this sheet