

INSTRUCTIONS

1. Original and/or subsequent record used to evaluate the corner position.
2. Description of evidence found, note discrepancies in the record, state method of establishing lost or obliterated corners.
3. Description of monument and accessories set to perpetuate the corner position.
4. Sketch of corner, show all pertinent data which can best be shown in a sketch example, corner marking, topography ties, position of accessories, etc.
5. Certification must be signed and sealed by Land Surveyor registered in the State of Montana.
6. Fill in Cross Index & Section Diagram at bottom of sheet.

CERTIFIED CORNER RECORDATION

Corner 8 of MS 5024 T. 34 N. R. 33 W. P.M.M. Lincoln County

I. 1896 MS original record by Abram L. Jaqueth: "Seventh Course, N.26°38'W. Set a post 6 ins. square, 5 ft. long, 2 ft. deep, marked 8-5024 for Cor. No. 8.

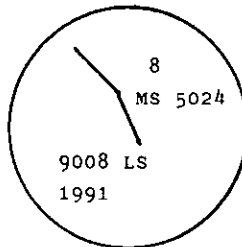
A blazed pine tree, 22 ins. in diam., marked BT 8-5024, bears N.77°10'E., 20 ft. dist.

A blazed cedar tree, 12 ins. in diam., marked BT 8-5024, bears N.70°35'W., 19.5 ft. dist."

II. Found no corner monument and no accessories.

III. At position determined by grant boundary adjustment between corners 5 and 9.

Set a 3/4 ins. diam., 30 ins long aluminum rod, 24 ins. in the ground with aluminum cap mkd. as shown:



Established two new bearing trees:

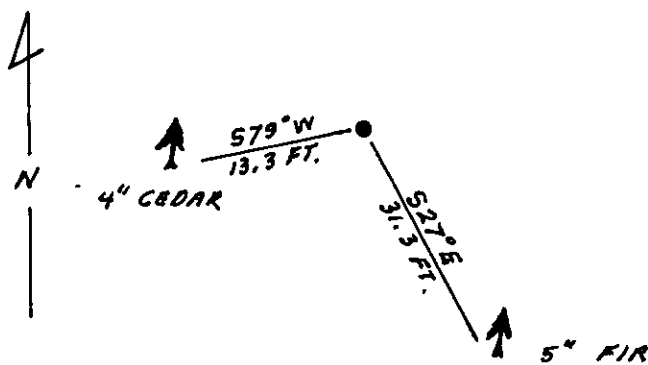
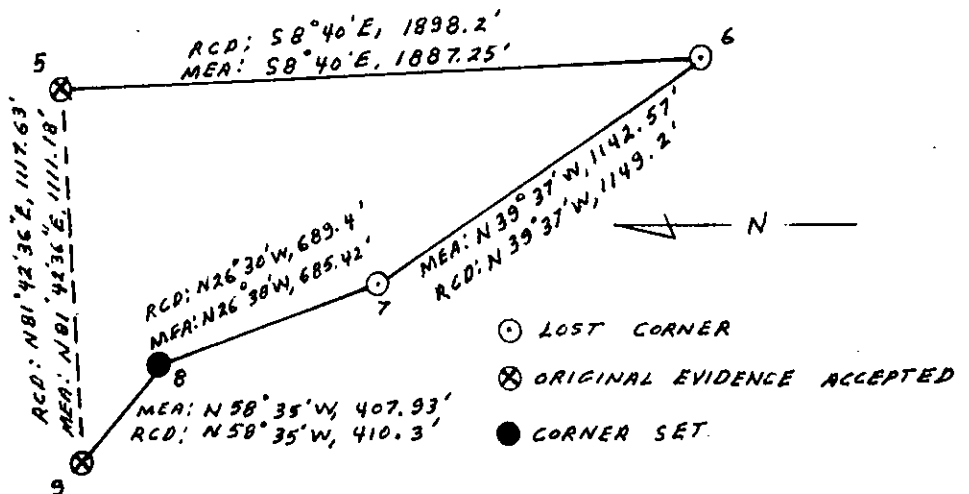
A douglas fir, 5 ins. diam., bears S.27°E., 31.3 ft. dist., mkd. X BT.

A cedar, 4 ins. diam., bears S.79°W., 13.3 ft. dist., mkd. X BT.

Painted red bands around the bearing trees and attached "Land Survey Monument" and "Bearing Tree" signs.

Set a galvanized steel guard post with "Land Survey Marker" and "Property Boundary" decals, S.26°E., 3 ft. dist. from corner.

Magnetic declination: 20° East



SKETCH OF CORNER

CERTIFICATION MONTANA

I, Kevin A. Todd
 certify the information shown herein is true and correct.

Kevin A. Todd
 Signature Ground Party Chief

I, Ronald A. Pearson
 certify that this Corner Record correctly represents and is confirmed by me or under my direction in compliance with the "Corner Recordation Act" (70-2-101, et seq., M.C.A.)

Ronald A. Pearson
 Signature of Surveyor & Seal

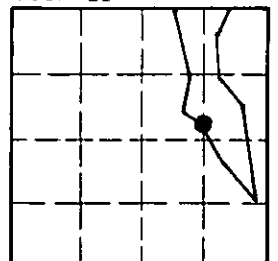
Date: 11/26/91 Reg. No. 9008 LS

Employer: U.S. FOREST SERVICE

Office of Clerk and Recorder, County of Lincoln. This "corner record" was filed for record on Jan 16, 1992 was noted on the cross-index plat and is assigned page No. 41651 in book No. Coral M. Cummings

8 MS 5024 34 N 33 W
 Cross Index No. T. R. PMM

Sec. 21



• corner this sheet