

INSTRUCTIONS

1. Original and/or subsequent record used to evaluate the corner position.
2. Description of evidence found, note discrepancies in the record, state method of establishing lost or obliterated corners.
3. Description of monument and accessories set to perpetuate the corner position.
4. Sketch of corner, show all pertinent data which can best be shown in a sketch example, corner marking, topography ties, position of accessories, etc.
5. Certification must be signed and sealed by Land Surveyor registered in the State of Montana.
6. Fill in Cross Index & Section Diagram at bottom of sheet.

CERTIFIED CORNER RECORDATION

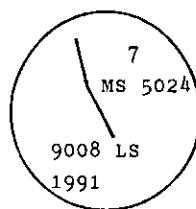
Corner 7 of MS 5024 T. 34 N. R. 33 W. P.M.M. Lincoln County

- I. 1896 MS original record by Abram L. Jaqueth: "Sixth Course, N.39°37'W. wagon road bears N.8°10'W. Loc. Cor. set a post 5 ins. square, 5 ft. long, 2 ft. deep, marked 7-5024 for Cor. No. 7. A blazed fir tree, 8 ins. in diam., marked BT 7-5024, bears N.82°50'E., 3 ft. dist. A blazed hemlock tree, 8 ins. in diam., marked 7-5024 BT., bears S.43°00'W., 9 ft. dist."

II. Found no corner monument and no accessories.

III. At position determined by grant boundary adjustment between corners 5 and 9.

Set a 3/4 ins. diam., 30 ins. long aluminum rod, 20 ins. in the ground with aluminum cap mkd. as shown:



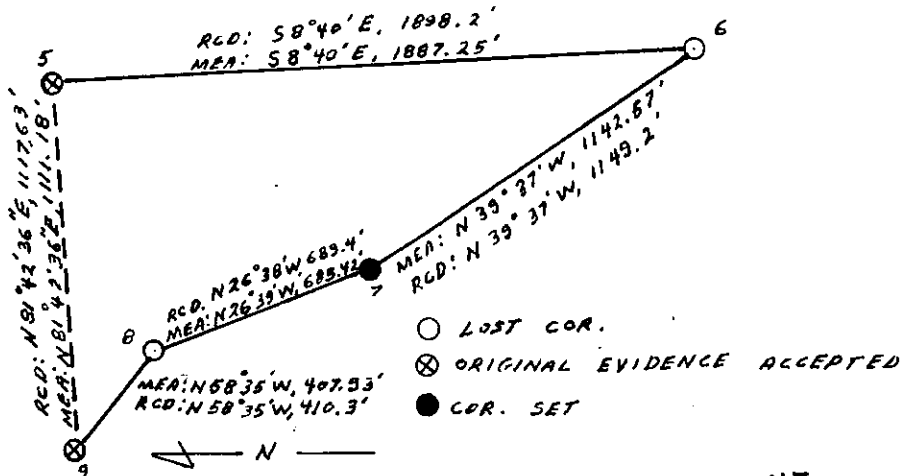
Established one new bearing tree:

A cedar, 10 ins. diam., bears N.46°W., 26.1 ft. dist., mkd. 7 MS 5024 BT.
No other bearing trees available.

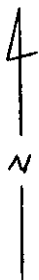
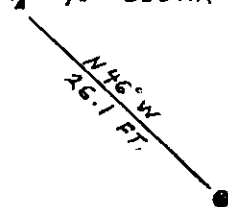
Painted red band around the bearing tree and attached "Land Survey Monument" and "Bearing Tree" signs.

Set a galvanized steel guard post with "Land Survey Marker" and "Property Boundary" decals, S.40°E., 3 ft. dist from corner.

Magnetic declination: 20° East



10" CEDAR

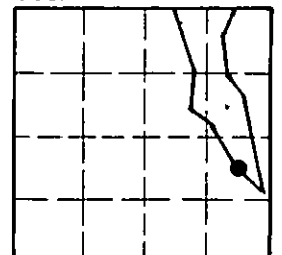


SKETCH OF CORNER

CERTIFICATION
 I, Kevin A. Todd
 certify the information shown herein is true and correct.
Kevin A. Todd
 Signature Ground Party
 I, Ronald A. Pearson
 certify that this Corner Record correctly represents work performed by me or under my direction in compliance with the "Corner Recordation Act" (70-22-101, et seq., M.C.A.)
Ronald A. Pearson
 Signature of Surveyor & Seal
 Date: 11/26/91 Reg. No. 9008 LS
 Employer: U.S. FOREST SERVICE

Office of Clerk and Recorder, County of Lincoln. This "corner record" was filed for record on Jan 16, 1992 was noted on the cross-index plat and is assigned page No. 4650, in book No. Coral Ln. Cummings
by Rick Brackley official

Sec. 21



Cross Index No. 7 MS 5024 T. 34 N R. 33 W PMM

• corner this sheet