

## INSTRUCTIONS

1. Original and/or subsequent record used to evaluate the corner position.
2. Description of evidence found, note discrepancies in the record, state method of establishing lost or obliterated corners.
3. Description of monument and accessories set to perpetuate the corner position.
4. Sketch of corner, show all pertinent data which can best be shown in a sketch example, corner marking, topography ties, position of accessories, etc.
5. Certification must be signed and sealed by Land Surveyor registered in the State of Montana.
6. Fill in Cross Index & Section Diagram at bottom of sheet.

## CERTIFIED CORNER RECORDATION

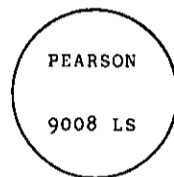
Corner 6 of MS 5024 T. 34 N. R. 33 W. P.M.M. Lincoln County

- I. 1896 MS original record by Abram L. Jaqueth: "Fifth Course, S.8°40'E. Shaft No. 3, 5x5 ft., 3 ft. deep, bears S.37°08'W., 64.5 ft. dist.. Loc. Cor. set a post, 6 ins. square, 5 ft. long, 2 ft. deep, marked 6-5024 for Cor. No. 6.
- A blazed pine tree, 7 ins. in diam., marked 6-5024 BT, bears N.62°00'E., 4 ft. dist.
- A blazed birch tree, 12 ins. in diam., marked 6-5024 BT., bears N.65°15'W., 24 ft. dist."

II. Found no corner monument and no accessories.

III. At position determined by grant boundary adjustment between corners 5 and 9.

Set a 5/8 ins. diam., 16 ins. long rebar, with yellow plastic cap, 2 ins. below road surface. Cap mkd. as shown:



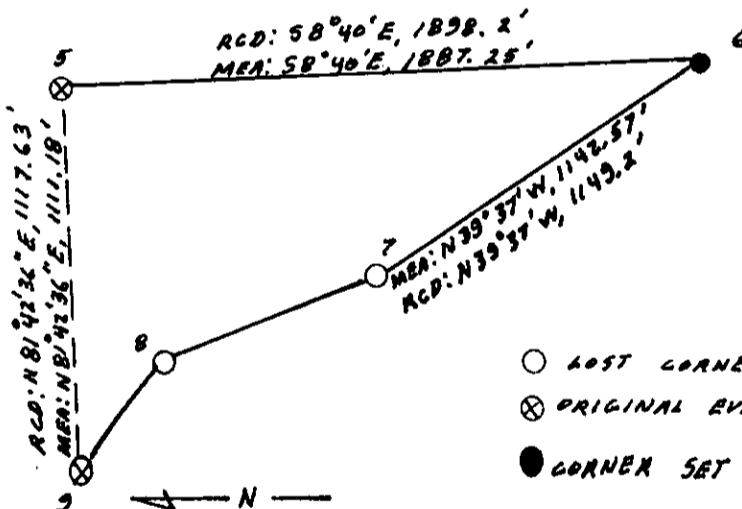
Established two new bearing trees:

- A cedar, 4 ins. diam., bears S.72°E., 25.8 ft. dist., mkd. X BT.
- A cedar, 8 ins. diam., bears N.41°W., 101.0 ft. dist., mkd. 6 MS 5024 BT.

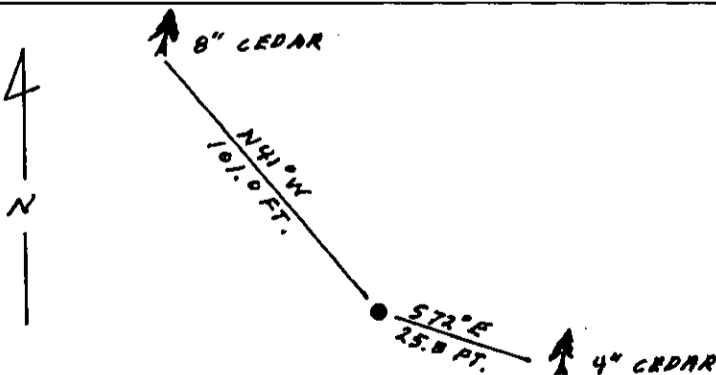
Painted red bands around the bearing trees and attached "Land Survey Monument" and "Bearing Tree" signs.

Set a galvanized steel guard post with "Land Survey Marker" decal, N.80°E., 7 ft. dist. from corner.

Magnetic declination: 20° East



- LOST CORNER  
⊗ ORIGINAL EVIDENCE ACCEPTED  
● CORNER SET



SKETCH OF CORNER

CERTIFICATION

I, Kevin A. Todd  
certify the information shown herein is true and correct.

Ronald A. Pearson  
Signature Ground Party Chief

I, Ronald A. Pearson  
certify that this Corner Record correctly represents the corner formed by me or under my direction in compliance with the "Corner Recordation Act" (70-22-101, et seq., M.C.A.)

Ronald A. Pearson  
Signature of Surveyor & Seal

Date: 11/26/91 Reg. No. 9008 LS

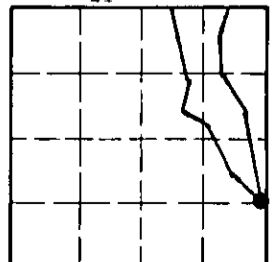
Employer: U.S. FOREST SERVICE

Office of Clerk and Recorder, County of Lincoln. This "corner record" was filed for record on Jan 16, 1992 was noted on the cross-index plat and is assigned page No. 4649, in book No. 4649

Chad M. Cummings  
by Ronald A. Pearson

Cross Index No. 6 MS 5024 T. 34 N R. 33 W PMM

Sec. 21



• corner this sheet