

INSTRUCTIONS

1. Original and/or subsequent record used to evaluate the corner position.
2. Description of evidence found, note discrepancies in the record, state method of establishing lost or obliterated corners.
3. Description of monument and accessories set to perpetuate the corner position.
4. Sketch of corner, show all pertinent data which can best be shown in a sketch example, corner marking, topography ties, position of accessories, etc.
5. Certification must be signed and sealed by Land Surveyor registered in the State of Montana.
6. Fill in Cross Index & Section Diagram at bottom of sheet.

CERTIFIED CORNER RECORDATION

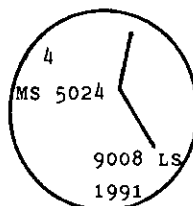
Corner 4 of MS 5024 T. 34 N. R. 33 W. P.M.M. Lincoln County

- I. 1896 MS original record by Abram L. Jaqueth: "Third Course, S.13°39'E. Along the right bank of Yaak River. Ditch, 4 ft. 2 in. wide, 3 ft. deep, 1060 ft. long, course S.61°E. Mouth of 4th. of July Cr. 10 ft., wide course S.60°E., Set a post 5 ins. square, 5 ft. long, 2 ft. deep, marked 4-5024 for Cor. No. 4.
- A blazed tamarack tree, 12 ins. in diam., marked 4-5024 BT, bears S.20°40'E., 20 ft. dist.
- A blazed spruce tree, 12 ins. in diam., marked 4-5024 BT., bears N.25°00'W., 13.2 ft. dist."

II. Found no corner monument and no accessories.

III. At position determined by grant boundary adjustment between corners 2 and 5.

Set a 3/4 ins. diam., 30 ins long aluminum rod, 24 ins. in the ground with aluminum cap mkd. as shown:



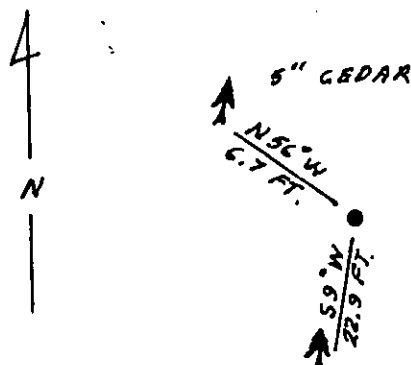
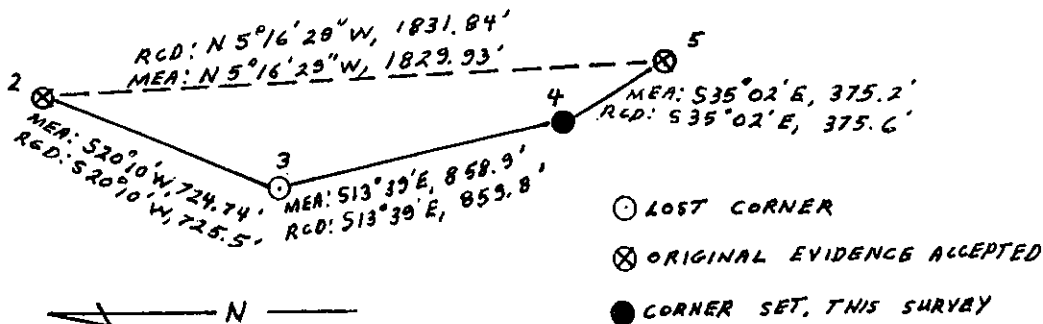
Established two new bearing trees:

- A cedar, 14 ins. diam., bears S.9°W., 22.9 ft. dist., mkd. 4 MS 5024 BT.
- A cedar, 5 ins. diam., bears N.56°W., 6.7 ft. dist., mkd. X BT.

Painted red bands around the bearing trees and attached "Land Survey Monument" and "Bearing Tree" signs.

Set a galvanized steel guard post with "Land Survey Marker" and "Property Boundary" decals, S.35°E., 4 ft. dist. from corner.

Magnetic declination: 20° East



SKETCH OF CORNER

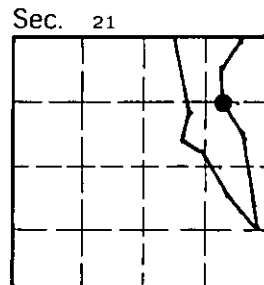
CERTIFICATION

I, Kevin A. Todd RONALD A. PEARSON
 certify the information shown herein is true and correct.
 Signature Ground Party Chief
 I, Ronald A. Pearson
 certify that this Corner Record correctly represents work performed by me or under my direction in compliance with the "Corner Recordation Act" (70-22-101, et seq., M.C.A.)
 Signature of Surveyor & Seal
 Date: 11/26/91 Reg. No. 9008 LS
 Employer: U.S. FOREST SERVICE

Office of Clerk and Recorder, County of Lincoln. This "corner record" was filed for record on Jan 16, 1992 was noted on the cross-index plat and is assigned page No. 4647, in book No. _____

Carol M. Cummings
 by Chris R. Rasmussen Official

Cross Index No. _____ T. _____ R. _____ PMM



• - corner this sheet