

INSTRUCTIONS

1. Original and/or subsequent record used to evaluate the corner position.
2. Description of evidence found, note discrepancies in the record, state method of establishing lost or obliterated corners.
3. Description of monument and accessories set to perpetuate the corner position.
4. Sketch of corner, show all pertinent data which can best be shown in a sketch example, corner marking, topography ties, position of accessories, etc.
5. Certification must be signed and sealed by Land Surveyor registered in the State of Montana.
6. Fill in Cross Index & Section Diagram at bottom of sheet.

CERTIFIED CORNER RECORDATION

Corner 9 of HES 734 T. 34 N. R. 33 W. Lincoln County

- I. 1917 H.E.S. 734 original record by E. R. Johnson: "Establish cor. No. 9 of this survey as follows:
Set a small stone, marked with a cross (X) under a granite stone 28x12x10 ins., 18 ins. in the ground,
marked 9 HES 734 on SW face and a cross (x) on top for exact corner point, from which

A cross (x) on a larch tree, 12 ins. dia., bears N88°30'W, 15 links distant.
A cross (x) on a larch tree, 27 ins. dia., bears N20°45'W, 93 links distant; each blazed
and scribed 9 HES 734 BT.

Raise a mound of stone 4 ft. base, 2 ft. high, SW of corner."

1974 C.O.S. No. 17 record by J. W. Ninneman, Reg. No. 534 ES: "Granite stone 10"x12"x10" above ground
marked 9 HES 734 mound of stone and two BTs."

1977 C.O.S. No. 413 record by J. W. Ninneman, Reg. No. 534 ES: "H.E.S. No. 734 corner stone
monuments described on C. of S. No. 17."

1978 C.O.S. No. 532 record by J. W. Ninneman, Reg. No. 534 ES: "Found original H.E.S. No. 734 stone
monument."

- II. Found a firmly set stone, 10x12 ins., 8 ins. out of ground, mkd. 9 HES 734 on SW face, from which

A larch snag, 16 ins. dia., bears N88°W, 10.2 ft. (15 lks.) dist., mkd. 9 HES 734 BT.
A larch stump, 26 ins. dia., bears N20°W, 61.0 ft. (92 lks.) dist., no visible scribe.

A 2x2 1/2 ins., steel I bar, alongside the NW face of stone monument (unknown record).

A mound of stone, 2 ft. high, bears S84°W, 4 ft. dist.

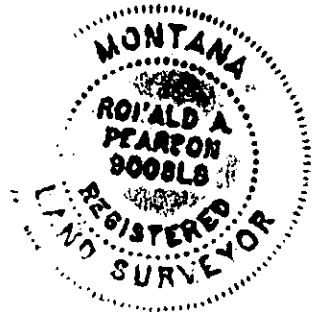
- III. Accepted original stone; establish two new bearing trees:

A hemlock, 6 ins. dia., bears S84°W, 5.9 ft. dist., mkd. X BT.
A hemlock, 8 ins. dia., bears S19°E, 12.1 ft. dist., mkd. 9 HES 734 BT.

Painted red bands around the bearing trees and attached "Land Survey Monument" and "Bearing Tree"
signs.

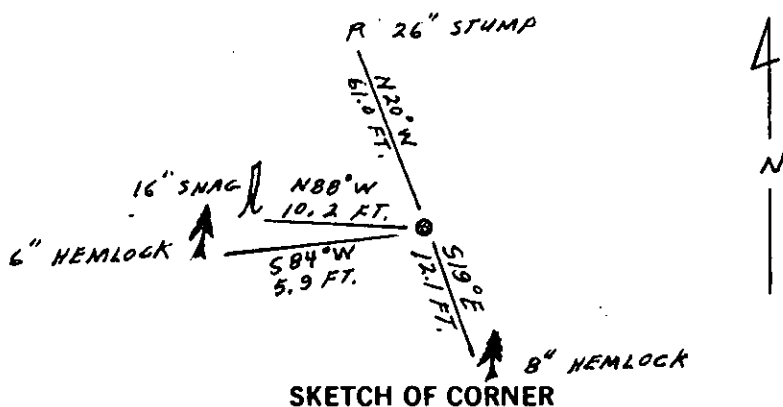
Set a 6 ft. galvanized steel guard post with "Land Survey Marker" and "Property Boundary"
decals, N19°W, 3 ft. dist. from corner.

Magnetic declination: 20° East



CERTIFICATION

I, Kevin A. Todd
certify the information shown herein is true and correct.
Kevin A. Todd
Signature Ground Party Chief
I, Ronald A. Pearson
certify that this Corner Record correctly represents work performed
by me or under my direction in compliance with the "Corner
Recordation Act" (70-22-101, et seq., M.C.A.)
Ronald A. Pearson
Signature of Surveyor & Seal
Date: 12/30/91 Reg. No. 9008LS
Employer: U.S. FOREST SERVICE

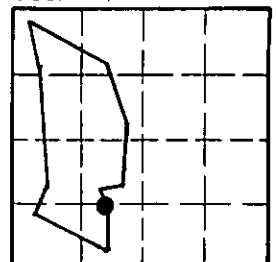


SKETCH OF CORNER

Office of Clerk and Recorder, County of Lincoln. This "corner
record" was filed for record on Jan 16, 1992
was noted on the cross-index plat and is assigned page No. 4643, in
book No. _____
Coral M. Cummings
by Deborah J. Jorgensen

Cross Index No. 9 HES 734 T. 34 N. R. 33 W. PMM

Sec. 27



• - corner this sheet