

## INSTRUCTIONS

1. Original and/or subsequent record used to evaluate the corner position.
2. Description of evidence found, note discrepancies in the record, state method of establishing lost or obliterated corners.
3. Description of monument and accessories set to perpetuate the corner position.
4. Sketch of corner, show all pertinent data which can best be shown in a sketch example, corner marking, topography ties, position of accessories, etc.
5. Certification must be signed and sealed by Land Surveyor registered in the State of Montana.
6. Fill in Cross Index & Section Diagram at bottom of sheet.

## CERTIFIED CORNER RECORDATION

Corner 8 of HES 734 T. 34 N. R. 33 W. Lincoln County

- I. 1917 H.E.S. 734 original record by E. R. Johnson: "Establish cor. No. 8 of this survey as follows:  
Set a small stone, marked with a cross (X) under a sandstone 30x12x6 ins., 20 ins. in the ground,  
marked 8 HES 734 on NW face and a cross (x) on top for exact corner point, from which

A cross (x) on a larch tree, 6 ins. dia., bears  $S36^{\circ}30'W$ , 52 links distant.

A cross (x) on a larch tree, 8 ins. dia., bears  $S38^{\circ}30'E$ , 56 links distant; each blazed  
and scribed 8 HES 734 BT.

Raise a mound of stone 4 ft. base, 2 ft. high, NW of corner."

1974 C.O.S. No. 17 record by J. W. Ninneman, Reg. No. 534 ES: "Sandstone 10"x12"x6" above ground  
marked 8 HES 734 mound of stone and two BTs."

1975 C.O.S. No. 160 record by J. W. Ninneman, Reg. No. 534 ES: "H.E.S. Corners pertinent  
to the subject tract were found as described in the record field notes of H.E.S. No. 734 . . . "

1977 C.O.S. No. 413 record by J. W. Ninneman, Reg. No. 534 ES: "H.E.S. No. 734 corner stone  
monuments described on C. of S. No. 17."

- II. Found a firmly set stone, 12x6 ins., 8 ins. out of ground, mkd. 8 HES 734 on NW face, from which

A dead larch, 12 ins. dia., bears  $S38^{\circ}E$ , 37.2 ft. (56 lks.) dist., visible scribe.

A 2x2 1/2 ins., steel I bar alongside the NW face of stone monument (unknown record).

- III. Accepted original stone; establish two new bearing trees:

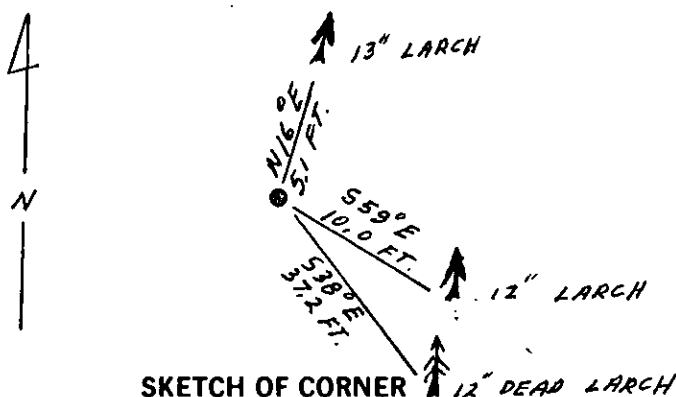
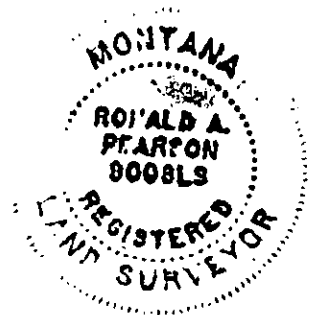
A larch, 13 ins. dia., bears  $N16^{\circ}E$ , 5.1 ft. dist., mkd. 8 HES 734 BT.

A larch, 12 ins. dia., bears  $S59^{\circ}E$ , 10.0 ft. dist., mkd. 8 HES 734 BT.

Painted red bands around the bearing trees and attached "Land Survey Monument" and "Bearing Tree"  
signs.

Set a 6 ft. galvanized steel guard post with "Land Survey Marker" and "Property Boundary"  
decals,  $S19^{\circ}E$ , 3 ft. dist. from corner.

Magnetic declination:  $20^{\circ}$  East



SKETCH OF CORNER

## CERTIFICATION

- I, Kevin A. Todd  
certify the information shown herein is true and correct.

Kevin A. Todd  
Signature Ground Party Chief

- I, Ronald A. Pearson  
certify that this Corner Record correctly represents work performed  
by me or under my direction in compliance with the "Corner  
Recordation Act" (70-22-101, et seq., M.C.A.).

Ronald A. Pearson  
Signature of Surveyor & Seal

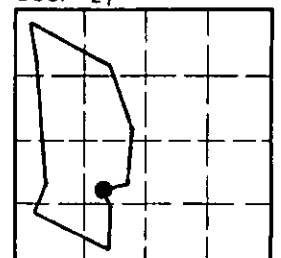
Date: 12/30/91 Reg. No. 9008LS

Employer: U.S. FOREST SERVICE

Office of Clerk and Recorder, County of Lincoln. This "corner  
record" was filed for record on Jan 16, 1992  
was noted on the cross-index plat and is assigned page No. 4642, in  
book No. \_\_\_\_\_

Coal M. Cunningham  
by Bruce R. Cunningham  
8 HES 734 34 N 33 W  
Cross Index No. \_\_\_\_\_ T. \_\_\_\_\_ R. \_\_\_\_\_ PMM

Sec. 27



• - corner this sheet