

INSTRUCTIONS

1. Original and/or subsequent record used to evaluate the corner position.
2. Description of evidence found, note discrepancies in the record, state method of establishing lost or obliterated corners.
3. Description of monument and accessories set to perpetuate the corner position.
4. Sketch of corner, show all pertinent data which can best be shown in a sketch example, corner marking, topography ties, position of accessories, etc.
5. Certification must be signed and sealed by Land Surveyor registered in the State of Montana.
6. Fill in Cross Index & Section Diagram at bottom of sheet.

CERTIFIED CORNER RECORDATION

Corner 7 of HES 734 T. 34 N. R. 33 W. P.M.M. Lincoln County

- I. 1917 H.E.S. 734 original record by E. R. Johnson: "Establish cor. No. 7 of this survey as follows:
 Set a small stone, marked with a cross (X) under a limestone 25x6x5 ins., 15 in the ground,
 marked 7 HES 734 on NW face and a cross (x) on top for exact corner point, from which

A cross (x) on a cedar tree, 24 ins. dia., bears N66°30'W, 52 links distant.

A cross (x) on a cedar tree, 12 ins. dia., bears S73°00'W, 46 links distant; each blazed and scribed 7 HES 734 BT.

Raise a mound of earth 4 ft. base, 2 ft. high, NW of corner."

1975 C.O.S. No. 160 record by J. W. Ninneman, Reg. No. 534 ES: "H.E.S. Corners pertinent to the subject tract were found as described in the record field notes of H.E.S. No. 734 . . . "

- II. Found a firmly set stone, 8x5 ins., 8 ins. out of ground, mkd. 7 HES 734 on NW face, from which

A rotten cedar stump, 27 ins. dia., bears N66°W, 34.3 ft. (52 lks.) dist., no visible scribe.

A rotten cedar stump, 20 ins. dia., bears S69°W, 31.8 ft. (48 lks./recd. 46 lks.) dist., no visible scribe.

A mound of stone 3 ft. base, 2 ft. high, NW of corner.

- III. Establish two new bearing trees:

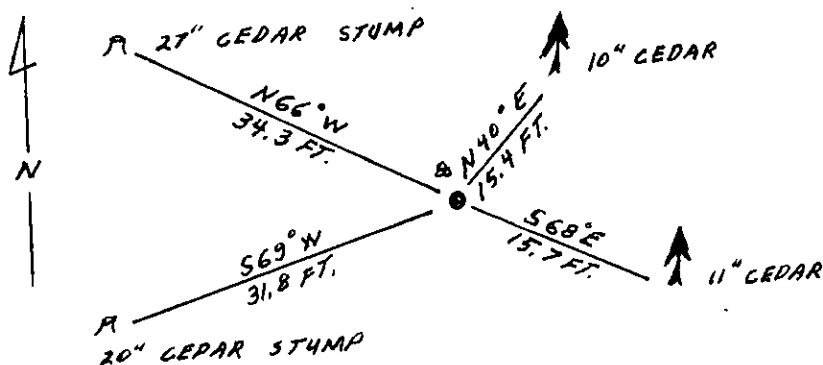
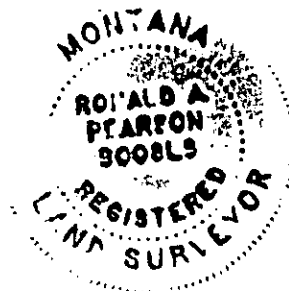
A cedar, 10 ins. dia., bears N40°E, 15.4 ft. dist., mkd. 7 HES 734 BT.

A cedar, 11 ins. dia., bears S68°E, 15.7 ft. dist., mkd. 7 HES 734 BT.

Painted red bands around the bearing trees and attached "Land Survey Monument" and "Bearing Tree" signs.

Set a 6 ft. galvanized steel guard post with "Land Survey Marker" and "Property Boundary" decals, North, 3 ft. dist. from corner.

Magnetic declination: 20° East



SKETCH OF CORNER

CERTIFICATION

I, Kevin A. Todd
 certify the information shown herein is true and correct.

Kevin A. Todd
 Signature Ground Party Chief

I, Ronald A. Pearson
 certify that this Corner Record correctly represents work performed by me or under my direction in compliance with the "Corner Recordation Act" (70-22-101, et seq., M.C.A.)

Ronald A. Pearson
 Signature of Surveyor & Seal

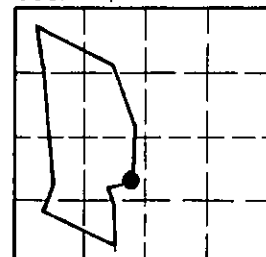
Date: 12/30/91 Reg. No. 9008LS

Employer: U.S. FOREST SERVICE

Office of Clerk and Recorder, County of Lincoln. This "corner record" was filed for record on Jan 16, 1992 was noted on the cross-index plat and is assigned page No. 4641, in book No. Corral M. Cunningham

Cross Index No. 7 HES 734 T. 34 N R. 33 W P.M.M.

Sec. 27



• - corner this sheet