

## INSTRUCTIONS

1. Original and/or subsequent record used to evaluate the corner position.
2. Description of evidence found, note discrepancies in the record, state method of establishing lost or obliterated corners.
3. Description of monument and accessories set to perpetuate the corner position.
4. Sketch of corner, show all pertinent data which can best be shown in a sketch example, corner marking, topography ties, position of accessories, etc.
5. Certification must be signed and sealed by Land Surveyor registered in the State of Montana.
6. Fill in Cross Index & Section Diagram at bottom of sheet.

## CERTIFIED CORNER RECORDATION

Corner 6 of HES 734 T. 34 N. R. 33 W. Lincoln County

- I. 1917 H.E.S. 734 original record by E. R. Johnson: "Establish cor. No. 6 of this survey as follows:  
Set a small stone, marked with a cross (X) under a sandstone 26x8x8 ins., 16 in the ground,  
marked 6 HES 734 on SW face and a cross (x) on top for exact corner point, from which

A cross (x) on a larch tree, 6 ins. dia., bears  $S60^{\circ}45'E$ , 55 links distant.

A cross (x) on a larch tree, 8 ins. dia., bears  $N64^{\circ}30'E$ , 121 links distant; each blazed and scribed 6 HES 734 BT.

Raise a mound of earth 4 ft. base, 2 ft. high, SW of corner."

1975 C.O.S. No. 160 record by J. W. Ninneman, Reg. No. 534 ES: "H.E.S. Corners pertinent to the  
subject tract were found as described in the record field notes of H.E.S. No. 734 . . . "

- II. Found a firmly set stone, 6x10 ins., 10 ins. out of ground, mkd. 6 HES 734 on W face (rcd. SW),  
from which

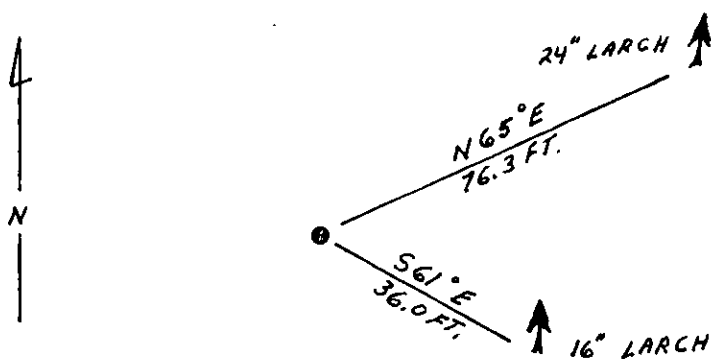
A larch, 16 ins. dia., bears  $S61^{\circ}E$ , 36.0 ft. (55 lks.) dist., no visible scribe.

A larch, 24 ins. dia., bears  $N65^{\circ}E$ , 76.3 ft. (115 lks./rcd. 121 lks.) dist., no visible scribe.

- III. Painted red bands around the bearing trees and attached "Land Survey Monument" and "Bearing Tree"  
signs.

Set a 6 ft. galvanized steel guard post with "Land Survey Marker" and "Property Boundary"  
decals, South, 3 ft. dist. from corner.

Magnetic declination:  $20^{\circ}$  East



SKETCH OF CORNER

## CERTIFICATION

- I, Kevin A. Todd  
certify the information shown herein is true and correct.

Kevin A. Todd  
Signature Ground Party Chief

- I, Ronald A. Pearson  
certify that this Corner Record correctly represents work performed  
by me or under my direction in compliance with the "Corner  
Recordation Act" (70-22-101, et seq., M.C.A.)

Ronald A. Pearson  
Signature of Surveyor & Seal

Date: 12/30/91 Reg. No. 9008LS

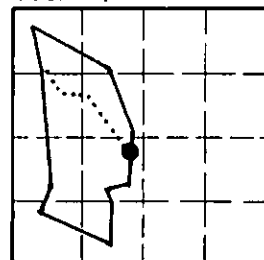
Employer: U.S. FOREST SERVICE

Office of Clerk and Recorder, County of Lincoln. This "corner  
record" was filed for record on Jan 16, 1992  
was noted on the cross-index plat and is assigned page No. 4640, in  
book No. \_\_\_\_\_

Carol M. Cummings  
Official  
6 HES 734 34 N 33 W

Cross Index No. \_\_\_\_\_ T. \_\_\_\_\_ R. \_\_\_\_\_ PMM

Sec. 27



• - corner this sheet