

## INSTRUCTIONS

1. Original and/or subsequent record used to evaluate the corner position.
2. Description of evidence found, note discrepancies in the record, state method of establishing lost or obliterated corners.
3. Description of monument and accessories set to perpetuate the corner position.
4. Sketch of corner, show all pertinent data which can best be shown in a sketch example, corner marking, topography ties, position of accessories, etc.
5. Certification must be signed and sealed by Land Surveyor registered in the State of Montana.
6. Fill In Cross Index & Section Diagram at bottom of sheet.

## CERTIFIED CORNER RECORDATION

Corner 3 of HES 734 T. 34 N. R. 33 W. Lincoln County

- I. 1917 H.E.S. 734 original record by E. R. Johnson: "Establish cor. No. 3 of this survey as follows:  
Set a small stone, marked with a cross (X) under a limestone 26x7x4 ins., 16 in the ground,  
marked 3 HES 734 on SE face and a cross (x) on top for exact corner point, from which

A cross (x) on a larch tree, 10 ins. dia., bears  $N57^{\circ}30'E$ , 128 links distant.

A cross (x) on a larch tree, 10 ins. dia., bears  $N79^{\circ}45'E$ , 128 links distant; each blazed and scribed 3 HES 734 BT.

Raise a mound of earth 4 ft. base, 2 ft. high, SE of corner."

1974 C.O.S. No. 17 record by J. W. Ninneman, Reg. No. 534 ES: "Limestone 10"x7"x4" above ground  
marked 3 HES 734 mound of stone and two BTs."

- II. Found a firmly set stone, 8x4 ins., 10 ins. out of ground, mkd. 3 HES 734 on SE face, from which

A larch, 21 ins. dia., bears  $N54^{\circ}E$ , 83.7 ft. (127 lks.) dist., mkd. X.  
 Other bearing tree falls in cleared R/W limits, not found.

A 2x2 1/2 ins., steel I bar, beside the NW face of stone monument. (origin unknown)

- III. Accepted original stone; establish one new bearing tree:

A larch, 8 ins. dia., bears  $N56^{\circ}W$ , 17.5 ft. dist., mkd. 3 HES 734 BT.

Painted red bands around the bearing trees and attached "Land Survey Monument" and "Bearing Tree" signs.

Set a 6 ft. galvanized steel guard post with "Land Survey Marker" and "Property Boundary" decals,  $S7^{\circ}E$ , 3 ft. dist. from corner.

Magnetic declination:  $20^{\circ}$  East



## CERTIFICATION

- I, Kevin A. Todd  
 certify the information shown herein is true and correct.

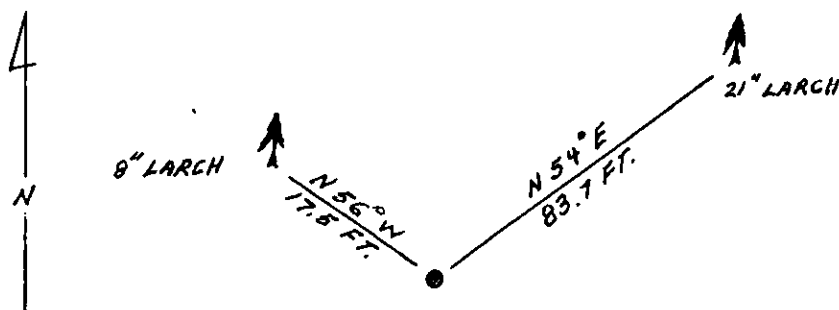
Kevin A. Todd  
 Signature Ground Party Chief

- I, Ronald A. Pearson  
 certify that this Corner Record correctly represents work performed by me or under my direction in compliance with the "Corner Recordation Act" (70-22-101, et seq., M.C.A.)

Ronald A. Pearson  
 Signature of Surveyor & Seal

Date: 12/30/91 Reg. No. 9008LS

Employer: U.S. FOREST SERVICE



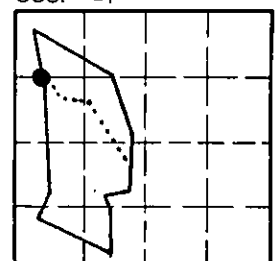
SKETCH OF CORNER

Office of Clerk and Recorder, County of Lincoln. This "corner record" was filed for record on Jan 16, 1992 was noted on the cross-index plat and is assigned page No. 4639, in book No. \_\_\_\_\_

Ronald M. Cummings  
 by Ronald M. Cummings Official

Cross Index No. 3 HES 734 T. 34 N R. 33 W PMM

Sec. 27



• - corner this sheet