

INSTRUCTIONS

1. Original and/or subsequent record used to evaluate the corner position.
2. Description of evidence found, note discrepancies in the record, state method of establishing lost or obliterated corners.
3. Description of monument and accessories set to perpetuate the corner position.
4. Sketch of corner, show all pertinent data which can best be shown in a sketch example, corner marking, topography ties, position of accessories, etc.
5. Certification must be signed and sealed by Land Surveyor registered in the State of Montana.
6. Fill in Cross Index & Section Diagram at bottom of sheet.

CERTIFIED CORNER RECORDATION

Corner 2 of HES 734 T. 34 N. R. 33 W. P.M.M. Lincoln County

- I. 1917 H.E.S. 734 original record by E. R. Johnson: "Establish cor. No. 2 of this survey as follows:
Set a small stone, marked with a cross (X) under a sandstone 28x6x6 ins., 18 in the ground,
marked 2 HES 734 on east face and a cross (x) on top for exact corner point, from which

A cross (x) on a larch tree, 30 ins. dia., bears N6°30'E, 97 links distant.

A cross (x) on a larch tree, 24 ins. dia., bears S65°00'E, 114 links distant; each blazed
and scribed 2 HES 734 BT.

Raise a mound of stone 4 ft. base, 2 ft. high, east of corner."

1974 C.O.S. No. 17 record by J. W. Ninneman, Reg. No. 534 ES: "Sandstone 10"x6"x6" above ground marked
2 HES 734 mound of stone and two BTs."

1977 C.O.S. No. 413 record by J. W. Ninneman, Reg. No. 534 ES: "H.E.S. No. 734 corner stone
monuments described on C. of S. No. 17."

- II. Found a firmly set stone, 4x3 ins., 8 ins. out of ground, mkd. 2 HES 734 on east face, from which

A larch snag, 38 ins. dia., bears N6°E, 64.2 ft. (97 lks.) dist., mkd. 2 HES 734 BT.

A larch stump, 32 ins. dia., bears S64°E, 75.3 ft. (114 lks.) dist., no visible scribe.

- III. Establish two new bearing trees:

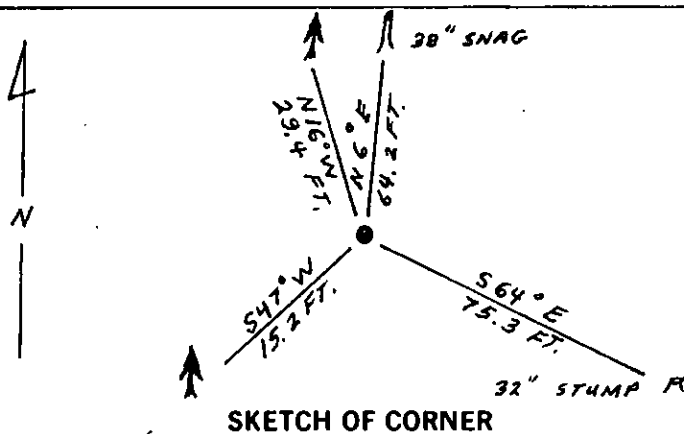
A larch, 10 ins. dia., bears S47°W, 15.2 ft. dist., mkd. 2 HES 734 BT.

A larch, 9 ins. dia., bears N16°W, 29.4 ft. dist., marked 2 HES 734 BT.

Painted red bands around the bearing trees and attached "Land Survey Monument" and "Bearing Tree"
signs.

Set a 6 ft. galvanized steel guard post with "Land Survey Marker" and "Property Boundary"
decals, N7°W., 3 ft. dist. from corner.

Magnetic declination: 20° East



CERTIFICATION

- I. Kevin A. Todd
certify the information shown herein is true and correct.

Kevin A. Todd
Signature Ground Party Chief

- I. Ronald A. Pearson
certify that this Corner Record correctly represents work performed
by me or under my direction in compliance with the "Corner
Recordation Act" (70-22-101, et seq., M.C.A.)

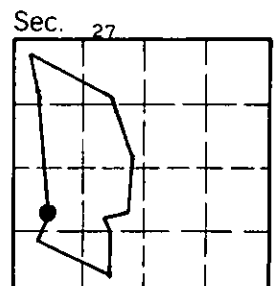
Ronald A. Pearson
Signature of Surveyor & Seal

Date: 12/30/91 Reg. No. 9008LS

Employer: U.S. FOREST SERVICE

Office of Clerk and Recorder, County of Lincoln. This "corner
record" was filed for record on Jan 16, 1992
was noted on the cross-index plat and is assigned page No. 4638, in
book No. _____

Coral M. Cummings
by Dick Reedy official
Cross Index No. 2 HES 734 T. 34 N R. 33 W PMM



• - corner this sheet