

INSTRUCTIONS

1. Original and/or subsequent record used to evaluate the corner position.
2. Description of evidence found, note discrepancies in the record, state method of establishing lost or obliterated corners.
3. Description of monument and accessories set to perpetuate the corner position.
4. Sketch of corner, show all pertinent data which can best be shown in a sketch example, corner marking, topography ties, position of accessories, etc.
5. Certification must be signed and sealed by Land Surveyor registered in the State of Montana.
6. Fill in Cross Index & Section Diagram at bottom of sheet.

CERTIFIED CORNER RECORDATION

Corner 15 of HES 734 T. 34 N. R. 33 W. Lincoln County

- I. 1917 H.E.S. 734 original record by E. R. Johnson: "Establish cor. No. 15 of this survey as follows:
Set a small stone, marked with a cross (X) under a shale stone 26x8x5 ins., 16 in the ground,
marked 15 HES 734 on SE face and a cross (x) on top for exact corner point, from which

A cross (x) on a larch tree, 8 ins. dia., bears $S82^{\circ}30'W$, 20 links distant.

A cross (x) on a larch tree, 8 ins. dia., bears $N15^{\circ}00'E$, 41 links distant; each blazed and scribed 15 HES 734 BT.

Raise a mound of earth 4 ft. base, 2 ft. high, SE of corner."

1975 C.O.S. No. 160 record by J. W. Ninneman, Reg. No. 534 ES: "H.E.S. Corners pertinent
to the subject tract were found as described in the record field notes of H.E.S. No. 734 . . . "

1980 C.O.S. No. 769 record by J. H. Ninneman, Reg. No. 4661 S: "Record location of stone monument
corner of H.E.S. 734."

- II. Found a firmly set stone, 8x5 ins., mkd. 15 HES 734 on SE face, from which

A larch, 14 ins. dia., bears $S82^{\circ}W$, 13.5 ft. (20 lks.) dist., visible scribe. (original)

A larch, 16 ins. dia., bears $N64^{\circ}E$, 6.3 ft. (9 lks.) dist., visible scribe. (origin unknown)

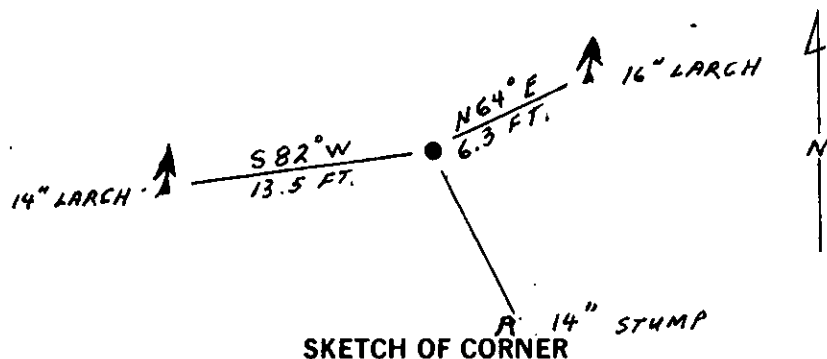
A stump, 14 ins. dia., bears $S27^{\circ}E$, 12.2 ft. (18 lks.) dist., visible scribe. (origin unknown)

A mound of earth SE of corner

- III. Painted red bands around the bearing trees and attached "Land Survey Monument" and "Bearing Tree" signs.

Set a 6 ft. galvanized steel guard post with "Land Survey Marker" and "Property Boundary" decals, $S17^{\circ}E$, 4 ft. dist. from corner.

Magnetic declination: 20° East



SKETCH OF CORNER

CERTIFICATION

- I. Kenneth R. Kern
 certify the information shown herein is true and correct.

Kenneth R. Kern
 Signature Ground Party Chief

- I. Ronald A. Pearson
 certify that this Corner Record correctly represents work performed by me or under my direction in compliance with the "Corner Recordation Act" (70-22-101 et seq., M.C.A.)

Ronald A. Pearson
 Signature of Surveyor & Seal

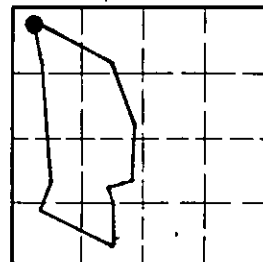
Date: 12/20/91 Reg. No. 9008LS

Employer: U.S. FOREST SERVICE

Office of Clerk and Recorder, County of Lincoln. This "corner record" was filed for record on Jan 16, 1992 was noted on the cross-index plat and is assigned page No. 4637, in book No. Corral um. Cummings

Cross Index No. 15 HES 734 T. 34 N R. 33 W PMM

Sec. 27



• - corner this sheet