

INSTRUCTIONS

1. Original and/or subsequent record used to evaluate the corner position.
2. Description of evidence found, note discrepancies in the record, state method of establishing lost or obliterated corners.
3. Description of monument and accessories set to perpetuate the corner position.
4. Sketch of corner, show all pertinent data which can best be shown in a sketch example, corner marking, topography ties, position of accessories, etc.
5. Certification must be signed and sealed by Land Surveyor registered in the State of Montana.
6. Fill in Cross Index & Section Diagram at bottom of sheet.

CERTIFIED CORNER RECORDATION

Corner 8 of HES 413 T. 34 N. R. 33 W. P.M.M. Lincoln County

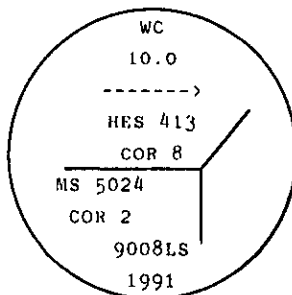
- I. 1896 M.S. 5024 Cor. 2 original record by Abram L. Jacqueth: "Set a post 5 ins. square 5 ft. long 2 ft. deep marked 2-5024 for cor. no. 2."

A blazed spruce tree, 14 ins. in diam., marked 2-5024 B.T., bears $N30^{\circ}30'W$, 3 ft.
A blazed fir tree, 14 ins. in diam., marked 2-5024 B.T., bears $S10^{\circ}00'E$, 4 ft."

1915 H.E.S. record by E. R. Johnson: "Identical with point for cor. No. 2 of Survey No. 5024 Evergreen placer. Set for Cor. No. 8, a quartzite stone 24x8x6 ins., 14 ins. in the ground marked 8 H.E.S. 413 on NW. face, and a cross (x) on top for the exact corner point. No bearings available, therefore dig pits 24x24x12 ins. crosswise on this and the succeeding course 7 ft. dist. and raise a mound of earth, 4 ft. base, 2 ft. high, NW of corner."

- II. Found a 24x8x6 ins. stone, laying on the ground, marked 8 HES 413 on one face and 2 MS 5024 on top. Next to a 2 in. dia. iron pipe (no record) on the river bank. No bearing trees or other accessories found.

- III. Corner 8 of H.E.S. 413 was considered lost and therefore reestablished by the Grant Boundary adjustment between corners 1 MS 5024 and 7 HES 413. Corner positions as shown are based upon a closed traverse, performed with a total station instrument. Since, the computed position falls at edge of the Yaak River, a witness corner, $S89^{\circ}56'W$, 10 ft. was set. Set a 2 1/2 in. diam. by 30 in. long alum. pipe, 26 ins. in the ground, 3 1/4 in. diam. alum. cap marked as shown



Bury original stone alongside monument.

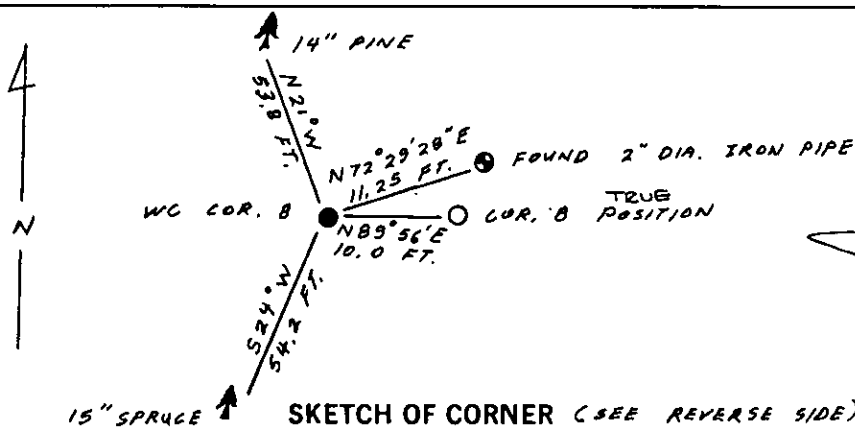
From which

A spruce, 15 ins. diam., bears $S24^{\circ}W$, 54.2 ft. dist., mkd. WC 2 MS 5024 BT.
A lodgepole pine, 14 ins. diam., bears $N21^{\circ}W$, 53.8 ft. dist., mkd. WC 8 HES 413 BT.

Painted red bands around the bearing trees and attached Land Survey Monument and Bearing Tree signs. Set a 6 ft. galvanized steel guard post with Land Survey Marker and Property Boundary decals, West, 3 ft.

Magnetic declination: 20° East.

SEE REVERSE SIDE FOR GRANTS BOUNDARY ADJUSTMENT

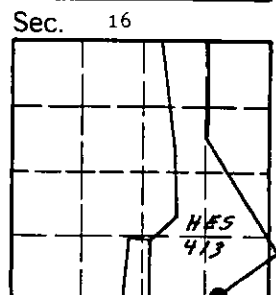


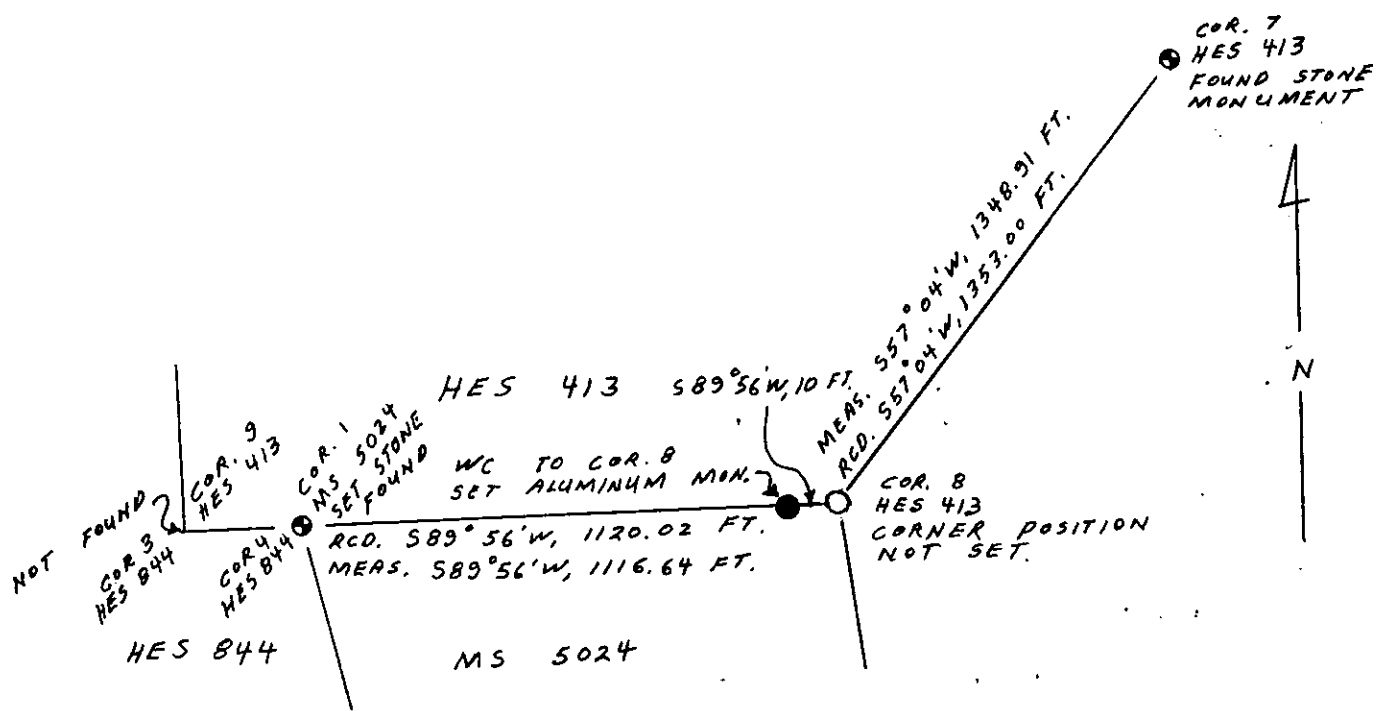
CERTIFICATION
I, Kevin A. Todd
certify the information shown herein is true and correct.
Kevin A. Todd
Signature Ground Party Chief
I, Ronald A. Pearson
certify that this Corner Record correctly represents work performed by me or under my direction in compliance with the "Corner Recordation Act" (70-22-101, et seq., M.C.A.)
Ronald A. Pearson
Signature of Surveyor & Seal
Date: 7/29/91 Reg. No. 9008 LS
Employer: U. S. FOREST SERVICE

Office of Clerk and Recorder, County of Lincoln. This "corner record" was filed for record on Aug 13, 1991 was noted on the cross-index plat and is assigned page No. 4553, in book No. Corral Mountain by Luis Buechler

County Official

Cross Index No. 8 HES 413 T. 34 N R. 33 W P.M.M.





REGISTERED
SURVEYOR
STATE OF
MISSISSIPPI
JAN 1900
10000