

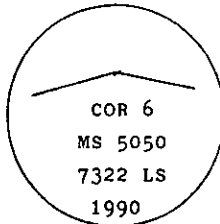
INSTRUCTIONS

1. Original and/or subsequent record used to evaluate the corner position.
2. Description of evidence found, note discrepancies in the record, state method of establishing lost or obliterated corners.
3. Description of monument and accessories set to perpetuate the corner position.
4. Sketch of corner, show all pertinent data which can best be shown in a sketch example, corner marking, topography ties, position of accessories, etc.
5. Certification must be signed and sealed by Land Surveyor registered in the State of Montana.
6. Fill in Cross Index & Section Diagram at bottom of sheet.

CERTIFIED CORNER RECORDATION

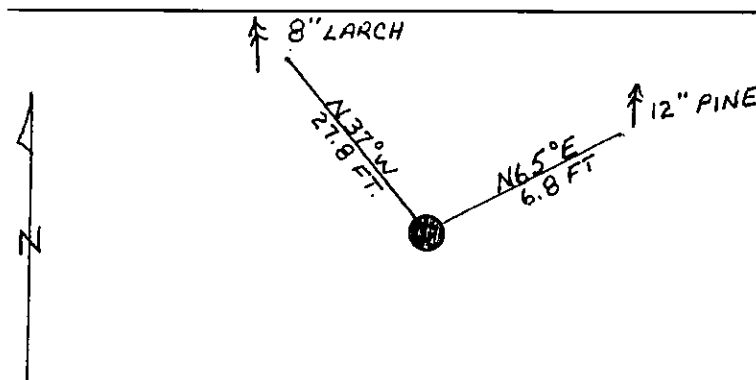
Corner Cor. 6 MS 5050 T. 34 N. R. 33 W. P.M.M. Lincoln County

- I. 1896 G.L.O. Original Record of the Goldflint Lode MS 5050 by Charles H. Bartlett: "Fifth Course S88°49'W, 547 ft., set a post 10 ins. square, 5 ft. long, 2 ft. deep, marked 6-5050 for Cor. No. 6.
A blazed pine tree 20 ins. in diam., marked 6-5050 BT bears S86°10'E, 108 ft.
A blazed pine tree 16 ins. in diam., marked BT 6-5050 BT bears N16°25'W, 11.0 ft."
- II. Found a 2 1/2 ft. sq. mound of stone, with rotten remains of wood in its center. No evidence of the bearing trees were found due to forest fire and mining activity.
- III. I accept the mound of stone as the best available evidence of the original corner position, and I set an aluminum pipe, 2 1/2 in. diam., 30 ins. long, 24 ins. in the ground, with a 3 1/4 in. diam. aluminum cap marked as shown, from which:



A pine, 12 ins. diam., bears N.65°E., 6.8 ft. dist., scribed Cor 6 MS 5050 BT.
A larch, 8 ins. diam., bears N.37°W., 27.8 ft. dist., scribed Cor MS 6 5050 BT.

Painted red bands around the bearing trees and attached Land Survey Monument and Bearing Tree signs. Set a 6 ft. galvanized steel guard post with Land Survey Marker and Property Boundary decals, East 3.0 ft.



SKETCH OF CORNER

CERTIFICATION

I, Jane Eby
certify the information shown herein is true and correct.

Signature Ground Party Chief
I, Alvah F. Hughes
certify that this Corner Record correctly represents work performed by me or under my direction in compliance with the "Corner Recordation Act" (70-22-101, et seq., M.C.A.)

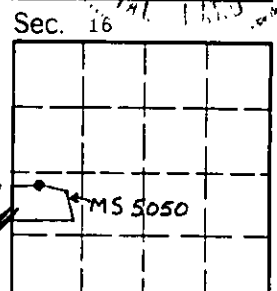
Alvah F. Hughes
Signature of Surveyor
Date: 01/15/91 Reg. No. 7927
Employer: U.S. FOREST SERVICE

Office of Clerk and Recorder, County of Lincoln. This "corner record" was filed for record on May 2, 1991 was noted on the cross-index plat and is assigned page No. 4544, in book No. Coral M Cummings by Eric Beal

County Official

L-.85 9.35 34 N 33 W

Cross Index No. T. R. P.M.M.



• - corner this sheet