

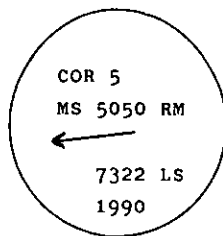
## INSTRUCTIONS

1. Original and/or subsequent record used to evaluate the corner position.
2. Description of evidence found, note discrepancies in the record, state method of establishing lost or obliterated corners.
3. Description of monument and accessories set to perpetuate the corner position.
4. Sketch of corner, show all pertinent data which can best be shown in a sketch example, corner marking, topography ties, position of accessories, etc.
5. Certification must be signed and sealed by Land Surveyor registered in the State of Montana.
6. Fill in Cross Index & Section Diagram at bottom of sheet.

## CERTIFIED CORNER RECORDATION

Corner Cor. 5 MS 5050 T. 34 N. R. 33 W. P.M.M. Lincoln County

- I. 1896 G.L.O. Original Record of the Goldflint Lode MS 5050 by Charles H. Bartlett: "Forth Course  
N27°46'W, 900 ft., set a post 6 ins. square, 5 ft. long, 2 ft. deep, marked 5-5050 for Cor. No. 5.  
A blazed fir tree 14 ins. in diam., marked 5-5050 BT bears N41°28'W, 23 ft.  
N.E. loc. cor. bears N15°41'E, 84.2 ft.
- II. No evidence of either the corner post or the bearing trees were found due to forest fire and mining activity.
- III. At the determined corner position using the broken boundary method of proportion, I reestablish the corner position and blaze and scribe a douglas fir, 10 ins. diam., mkd. Cor 5 MS 5050 for the exact corner position, from which I set a reference monument, an aluminum pipe, 2 1/2 in. diam., 30 ins. long, 24 ins. in the ground, with a 3 1/4 in. aluminum cap, marked as shown:



I establish two new bearing trees for the corner position:

A fir, 9 ins. diam., bears N.30°E, 25.6 ft. dist., scribed Cor 5 MS 5050 BT.

A fir, 9 ins., diam., bears S.49°30'E, 29.0 ft. dist., scribed Cor MS 5 5050 BT.

Painted red bands around the bearing trees and attached Land Survey Monument and Bearing Tree signs. Set a 6 ft. galvanized steel guard post with Land Survey Marker and Property Boundary decals. South East 3.0 ft.

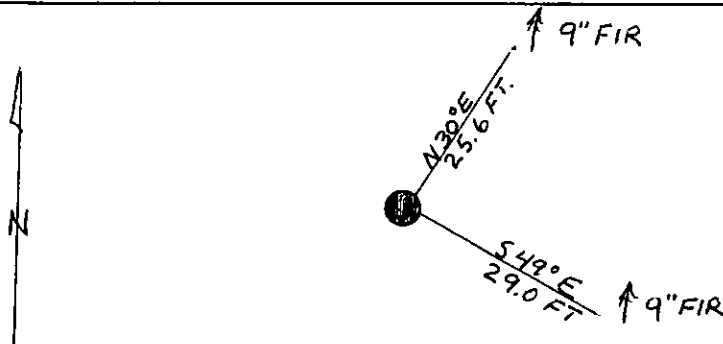
## CERTIFICATION

I, Jane Eby  
 certify the information shown herein is true and correct.

Signature Ground Party Chief

I, Alvah F. Hughes  
 certify that this Corner Record correctly represents work performed by me or under my direction in compliance with the "Corner Recordation Act" (70-22-101, et seq., M.C.A.)

Alvah F. Hughes  
 Signature of Surveyor & Seal  
 Date: 01/15/91 Reg. No. 3328  
 Employer: U.S. FOREST SERVICE

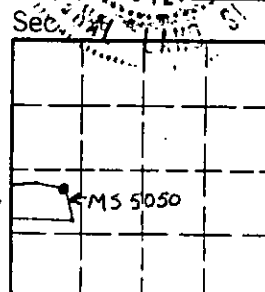


SKETCH OF CORNER

Office of Clerk and Recorder, County of Lincoln. This "corner record" was filed for record on May 2, 1991 was noted on the cross-index plat and is assigned page No. 4543, in book No. \_\_\_\_\_

Carol M. Cummings by Bill Bischoff  
 County Official

L-85 9.35 34 N 33 W  
 Cross Index No. \_\_\_\_\_ T. \_\_\_\_\_ R. \_\_\_\_\_ P.M.M.



• - corner this sheet