

INSTRUCTIONS

1. Original and/or subsequent record used to evaluate the corner position.
2. Description of evidence found, note discrepancies in the record, state method of establishing lost or obliterated corners.
3. Description of monument and accessories set to perpetuate the corner position.
4. Sketch of corner, show all pertinent data which can best be shown in a sketch example, corner marking, topography ties, position of accessories, etc.
5. Certification must be signed and sealed by Land Surveyor registered in the State of Montana.
6. Fill in Cross Index & Section Diagram at bottom of sheet.

CERTIFIED CORNER RECORDATION

Corner Cor. 6 MS 4968B T. 34 N. R. 33 W. P.M.M. Lincoln County

- I. 1897 G.L.O. Original Record of the Keystone Lode MS 4968B Amended by Abram L. Jaqueth: "Fifth Course S61°45'W at 301.1 feet: S.W. Loc. Cor. where I set a post, 5 ins. square, 5 ft. long, 2 ft. deep, marked 6-4968 for Cor. No. 6.

A blazed pine tree 8 in. in diam. marked 6-4968 BT bears S61°E, 12.8 feet.

A blazed fir tree 13 in. in diam. marked 6-4968 BT bears N14°25'E, 15.8 feet."

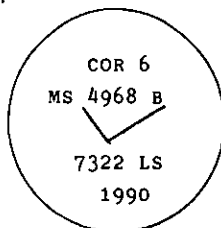
- II. I found charcoal remains of a 6 in. piece of vertical wood, 18 ins. below the ground surface, no scribing visible, from which:

A fir stump, 17 ins. diam., bears N14°E, 15.8 ft. dist., scribing visible.

No remains of other bearing tree, probably as a result of forest fire activity.

- III. I reestablished this corner in the exact position of the of the vertical wood and is at record bearing and distance from the original bearing tree stump. (N14°E, 15.8 ft.)

I set a aluminum pipe, 2 1/2 ins. diam., 30 ins. long, 27 ins. in the ground, with a 3 1/4 in. diam., aluminum cap, marked as shown, from which:



I established two new bearing trees.

A douglas fir, 9 ins. diam., bears S57°E, 16.9 feet, scribed Cor.6 MS 4968B BT.

A lodgepole pine, 11 ins. diam., bears S47°W, 9.4 feet dist., scribed Cor.6 MS 4968B BT.

Painted red bands around the bearing trees and attached Land Survey Monument and Bearing Tree signs. Set a 6 ft. galvanized steel guard post with Land Survey Marker and Property Boundary decals, NW, 3.0 ft.

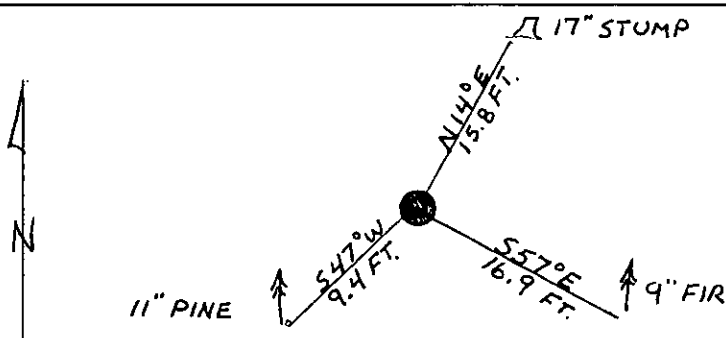
CERTIFICATION

I, Jane Eby
certify the information shown herein is true and correct.

Signature Ground Party Chief

I, Alvah F. Hughes
certify that this Corner Record correctly represents work performed by me or under my direction in compliance with the "Corner Recordation Act" (70-22-101, et seq., M.C.A.).

Alvah F. Hughes
Signature of Surveyor & Seal
Date: 01/15/991 Reg. No. 7322
Employer: U.S. FOREST SERVICE



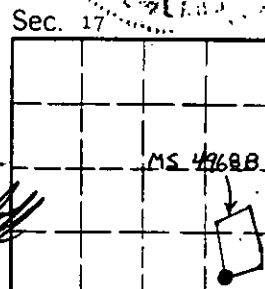
SKETCH OF CORNER

Office of Clerk and Recorder, County of Lincoln. This "corner record" was filed for record on May 2, 1991 was noted on the cross-index plat and is assigned page No. 4538, in book No. _____

Carol M. Cummings by Bill Busch
County Official

M. 50 8.75 34 N 33 W

Cross Index No. _____ T. _____ R. _____ P.M.M.



• - corner this sheet