

INSTRUCTIONS

1. Original and/or subsequent record used to evaluate the corner position.
2. Description of evidence found, note discrepancies in the record, state method of establishing lost or obliterated corners.
3. Description of monument and accessories set to perpetuate the corner position.
4. Sketch of corner, show all pertinent data which can best be shown in a sketch example, corner marking, topography ties, position of accessories, etc.
5. Certification must be signed and sealed by Land Surveyor registered in the State of Montana.
6. Fill in Cross Index & Section Diagram at bottom of sheet.

CERTIFIED CORNER RECORDATION

Corner Cor. 4 MS 4968B T. 34 N. R. 33 W. P.M.M. Lincoln County

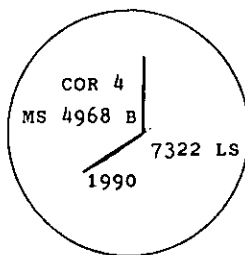
- I. 1897 G.L.O. Original Record of the Keystone Lode MS 4968B Amended by Abram L. Jaqueth: "Third Course S10 40'W at 23.7 feet: I set a post, 5 ins. square, 5 ft. long, 2 ft. deep, marked 4-4968 for Cor. No. 4

A blazed pine tree, 13 ins. in diam. marked 4-4968 BT bears S83°35'W, 29 feet.

A blazed spruce tree, 12 ins. in diam. marked 4-4968 BT bears N04°30'W, 16 feet."

- II. I found no evidence of either the corner post nor the bearing trees, as the corner location falls in the fill slope of an old road.

- III. At the determined corner position using the grant boundary method of proportion, I reestablished this corner and set a aluminum pipe, 2 1/2 ins. diam., 30 ins. long, 16 ins. in the ground, with a 3 1/4 in. diam. aluminum cap, marked as shown, from which:



I established two new bearing trees.

A cedar, 10 ins. diam., bears S39°E, 16.9 feet, scribed Cor.4 MS 4968B BT.

A hemlock, 12 ins. diam., bears S86°E, 40.9 feet dist., scribed Cor.4 MS 4968B BT.

Painted red bands around the bearing trees and attached Land Survey Monument and Bearing Tree signs. Set a 6 ft. galvanized steel guard post with Land Survey Marker and Property Boundary decals, S22°W 3.0 ft.



SKETCH OF CORNER

CERTIFICATION

I, Kevin Todd
certify the information shown herein is true and correct.

Kevin Todd
Signature Ground Party Chief

I, Alvah F. Hughes
certify that this Corner Record correctly represents work performed by me or under my direction in compliance with the "Corner Recordation Act" (70-22-101, et seq., M.C.L.)

Alvah F. Hughes
Signature of Surveyor

Date: 01/15/91 Reg. No. 23873

Employer: U.S. FOREST SERVICE

Office of Clerk and Recorder, County of Lincoln. This "corner record" was filed for record on May 2, 1991

was noted on the cross-index plat and is assigned page No. 4536, in book No. Coral M Cummings by Bill Basch

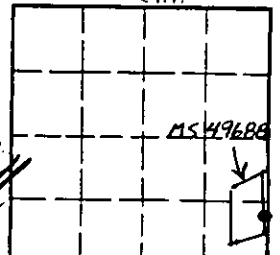
County Official

M. 25 8.97

34 N 33 W

Cross Index No. T. R. P.M.M.

Sec. 17 T. 34 N R. 33 W



• - corner this sheet