

INSTRUCTIONS

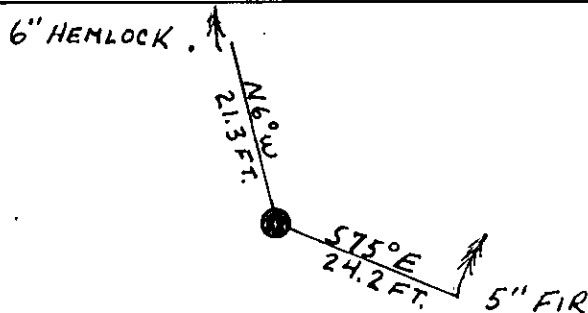
1. Original and/or subsequent record used to evaluate the corner position.
2. Description of evidence found, note discrepancies in the record, state method of establishing lost or obliterated corners.
3. Description of monument and accessories set to perpetuate the corner position.
4. Sketch of corner, show all pertinent data which can best be shown in a sketch example, corner marking, topography ties, position of accessories, etc.
5. Certification must be signed and sealed by Land Surveyor registered in the State of Montana.
6. Fill in Cross Index & Section Diagram at bottom of sheet.

CERTIFIED CORNER RECORDATION

Corner 7 of HES 413 T. 34 N. R. 33 W. P.M.M. Lincoln County

- I. 1915 H.E.S. original record by E. R. Johnson: Set a sandstone 26 by 15 by 8 ins., 16 ins. in the ground, mkd. 7 HES 413 on NW face, and a cross on top for the exact corner point. No bearings available, therefore dig pits 24 by 24 by 12 ins. crosswise on these and the succeeding course 7 ft. dist., and raise a mound of earth. 4 ft. base, 2 ft. high, NW of corner.
- II. Found a 15 by 8 ins. stone, firmly set, protruding 12 ins. out of the ground. Stone mkd. 7 HES 413 on NW face and a cross on top. Also found 2 ft. by 2 ft. by 8 ins. deep pits 7 ft. away along both courses from corner. No evidence of raised mound of earth.
- III. Established two new bearing trees
 A douglas fir, 5 ins. dia., bears $S75^{\circ}E$ 24.2 ft. dist., mkd. 7 HES 413 BT.
 A hemlock, 6 ins. dia., bears $N6^{\circ}W$ 21.3 ft. dist., mkd. 7 HES 413 BT.

Painted red bands around the bearing trees and attached Land Survey Monument and Bearing Tree signs.
 Magnetic declination: 20° East.



SKETCH OF CORNER

CERTIFICATION

I, Kevin A. Todd
 certify the information shown herein is true and correct.

Kevin A. Todd
 Signature Ground Party Chief

I, Alvah F. Hughes
 certify that this Corner Record correctly represents work performed by me or under my direction in compliance with the "Corner Recordation Act" (70-22-101, et seq., M.S.A.)

Alvah F. Hughes
 Signature of Surveyor Seal

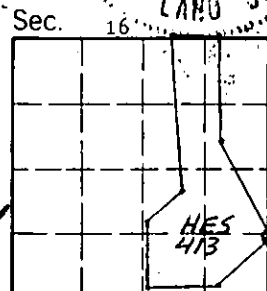
Date: 1/8/91 Reg. No. 7322

Employer: U. S. FOREST SERVICE

Office of Clerk and Recorder, County of Lincoln. This "corner record" was filed for record on 1-10-91 was noted on the cross-index plat and is assigned page No. 4478, in book No. Coral M. Cummings by Bill Buckell

County Official

Cross Index No. 7 HES 413 T. 34 N. R. 33 W. P.M.M.



• - corner this sheet