

INSTRUCTIONS

1. Original and/or subsequent record used to evaluate the corner position.
2. Description of evidence found, note discrepancies in the record, state method of establishing lost or obliterated corners.
3. Description of monument and accessories set to perpetuate the corner position.
4. Sketch of corner, show all pertinent data which can best be shown in a sketch example, corner marking, topography ties, position of accessories, etc.
5. Certification must be signed and sealed by Land Surveyor registered in the State of Montana.
6. Fill in Cross Index & Section Diagram at bottom of sheet.

CERTIFIED CORNER RECORDATION

Corner 5 of HES 413 T. 34 N. R. 33 W. P.M.M. Lincoln County

- I. 1915 H.E.S. original record by E. R. Johnson: Set a sandstone 24 by 12 by 9 ins., 14 ins. in the ground, mkd. 5 HES 413 on SW face, and a cross on top for the exact corner point, from which
- A cross on a white pine, 20 ins. dia., bears N58°02'E, 63 lks. (41.58 ft.) dist.
- A cross on a cedar, 24 ins. dia., bears N51°52'W, 25 lks. (16.50 ft.) dist.
- Each blazed and scribed 5 HES 413 BT
- Raised a mound of earth, 4 ft. base, 2 ft. high, SW of corner.

- II. Found a 12 by 9 ins. sandstone, firmly set, protruding 8 ins. out of the ground, mkd. 5 HES 413 on SW face and a cross on top. On the NW face, stone is mkd. 7 HES 1165. From which
- A fallen pine, 24 ins. dia., bears N57°E, 41.4 ft. dist., mkd. 5 HES 413.
- A fallen cedar, 25 ins. dia., bears N51°W, 16.2 ft. dist., no visible scribing.

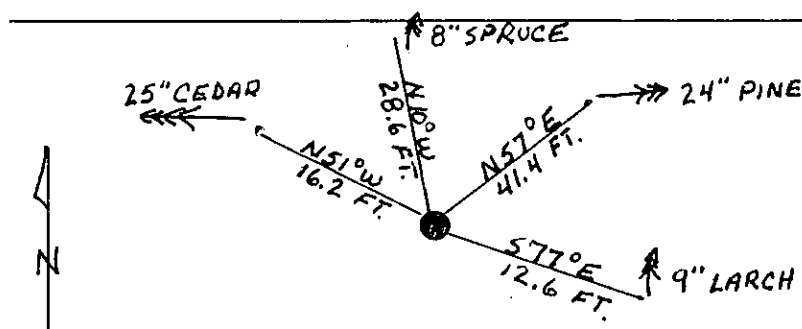
- III. Established two new bearing trees

- A larch, 9 ins. dia., bears S77°E, 12.6 ft. dist., mkd. 5 HES 413 BT.
- A spruce, 8 ins. dia., bears N10°W, 28.6 ft. dist., mkd. 5 HES 413 BT.

Painted red bands around the bearing trees and attached Land Survey Monument and Bearing Tree signs.

Set a 6 ft. galvanized steel guard post with Land Survey Marker and Property Boundary decals, S5°W, 3 ft.

Magnetic declination: 20° East.



SKETCH OF CORNER

CERTIFICATION

I, Ray Pederson
certify the information shown herein is true and correct.

Signature Ground Party Chief

I, Alvah F. Hughes
certify that this Corner Record correctly represents work performed by me or under my direction in compliance with the Corner Recordation Act" (70-22-101, et seq., M.C.A.)

Signature of Surveyor & Seal Alvah F. Hughes 7322, 19

Date: 1/8/91 Reg. No. 7322, 19

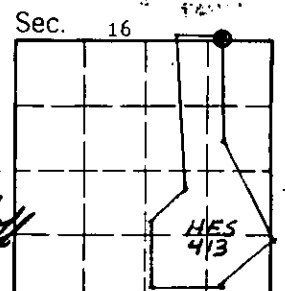
Employer: U.S. FOREST SERVICE

Office of Clerk and Recorder, County of Lincoln. This "corner record" was filed for record on 1-10-91

was noted on the cross-index plat and is assigned page No. 4476, in book No. _____

Coral M Cummings by David Buschhoff
County Official

5 HES 413 34 N 33 W
Cross Index No. _____ T. _____ R. _____ PMM



• - corner this sheet