

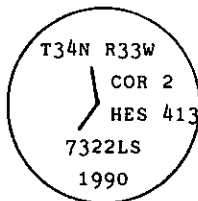
INSTRUCTIONS

1. Original and/or subsequent record used to evaluate the corner position.
2. Description of evidence found, note discrepancies in the record, state method of establishing lost or obliterated corners.
3. Description of monument and accessories set to perpetuate the corner position.
4. Sketch of corner, show all pertinent data which can best be shown in a sketch example, corner marking, topography ties, position of accessories, etc.
5. Certification must be signed and sealed by Land Surveyor registered in the State of Montana.
6. Fill in Cross Index & Section Diagram at bottom of sheet.

CERTIFIED CORNER RECORDATION

Corner 2 of HES 413 T. 34 N. R. 33 W. Lincoln County

- I. 1915 H.E.S. original record by E. R. Johnson: Set a sandstone 34 by 14 by 12 ins., 24 ins. in the ground, mkd. 2 HES 413 on SE face, and a cross on top for the exact corner point, from which
- A cross on a cedar 10 ins. dia., bears $S13^{\circ}56'E$, 92 lks. (60.72 ft.) dist.
- A cross on a fir 15 ins. dia., bears $N68^{\circ}30'E$, 44 lks. (29.04 ft.) dist.
- Each blazed and scribed 2 HES 413 BT.
- Raised a mound of earth, 4 ft. base, 2 ft. high, SE of corner.
- II. Found a 34 by 14 by 12 ins. stone, laying loose on the ground, mkd. 2 HES 413 on one face and X on another.
- A cedar, 20 ins. dia. with visible scribing.
- A fir stump, 18 ins. dia. mkd. 2 HES 413.
- Corner position, determined from found BTs, falls in a skid road.
- III. At position determined by record dist-dist intersect from found original BTs, set a 2 1/2 ins. dia. by 30 ins. long aluminum pipe 24 ins. in the ground with aluminum cap mkd. as shown



Established one new bearing tree

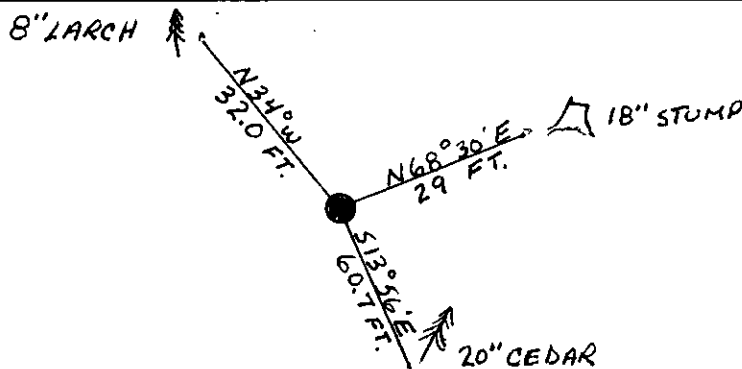
A larch, 8 ins. dia., bears $N34^{\circ}W$, 32.0 ft. dist., mkd. 2 HES 413 BT.

Bury original stone alongside pipe monument.

Painted red bands around the bearing trees and attached Land Survey Monument and Bearing Tree signs.

Set a 6 ft. galvanized steel guard post with Land Survey Marker and Property Boundary decals, $S51^{\circ}W$, 8 ft.

Magnetic declination: 20° East.



SKETCH OF CORNER

CERTIFICATION

I, Kevin A. Todd
certify the information shown herein is true and correct.

Kevin A. Todd
Signature Ground Party Chief

I, Alvah F. Hughes
certify that this Corner Record correctly represents work performed by me or under my direction in compliance with the Corner Recordation Act" (70-22-101, et seq., M.E.A.)

Alvah F. Hughes
Signature of Surveyor & Seal

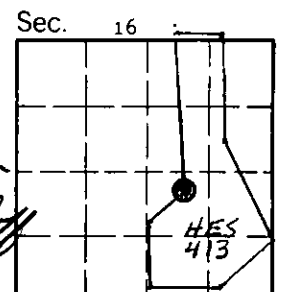
Date: 1/8/91 Reg. No. 7322LS

Employer: U.S. FOREST SERVICE

Office of Clerk and Recorder, County of Lincoln. This "corner record" was filed for record on 1-10-91 was noted on the cross-index plat and is assigned page No. 4473, in book No. _____

Coral M. Cummings by Bill Beechey
County Official

Cross Index No. 2 HES 413 T. 34 N R. 33 W PMM



• - corner this sheet