

## INSTRUCTIONS

1. Original and/or subsequent record used to evaluate the corner position.
2. Description of evidence found, note discrepancies in the record, state method of establishing lost or obliterated corners.
3. Description of monument and accessories set to perpetuate the corner position.
4. Sketch of corner, show all pertinent data which can best be shown in a sketch example, corner marking, topography ties, position of accessories, etc.
5. Certification must be signed and sealed by Land Surveyor registered in the State of Montana.
6. Fill in Cross Index & Section Diagram at bottom of sheet.

## CERTIFIED CORNER RECORDATION

5 of HES 407  
Corner 2 of HES 845 T. 34 N., R. 33 W., P.M.M. Lincoln County

- I. 1915 H.E.S. 407 original record by E. R. Johnson: "Set for Cor. No. 5, a sandstone 24x10x7 ins., 14 ins. in the ground, marked 5 HES 407 on W face, and a cross (x) on top for the exact corner point, from which

A cross (x) on a larch, 6 ins. dia., bears  $S4^{\circ}05'E$ , 33 lks.

A cross (x) on a larch, 6 ins. dia., bears  $N52^{\circ}10'E$ , 33 lks. dist.; each blazed and scribed 5 HES 407 BT.

Raise a mound of earth, 4 ft. base, 2 ft. high W of corner."

"Thence I run  $S54^{\circ}11'E$  on bdy. of claim"...@ 0.58 chains: "Intersect Cor. No. 5 of H.A. No. 56, list 1262, J. Teeters, applicant, a quartzite stone 10x12x5 ins. above ground, marked H/5 and witnessed by two bearing rocks."

1917 HES 845 original record by E. R. Johnson: "Intersect Cor. No. 5 of HES No. 407, which is a sandstone 10x10x7 ins. above ground, marked and witnessed as described by the Surveyor General. I adopt this stone for Cor. No. 2 of this survey and mark it 2 H.E.S. 845 on S face, the cross (x) on top is the exact corner point, from which

A cross (x) on a larch tree, 6 ins. dia., bears  $S22^{\circ}30'W$ , 31 lks. dist. (new BT).

A cross (x) on a larch tree, 6 ins. dia., bears  $S84^{\circ}00'E$ , 79 lks. dist. (new BT); each blazed and scribed 2 H.E.S. 845 BT.

Raise a mound of earth 4 ft. base, 2 ft. high, south of corner."

1968 Yaak Shore Acres plat, Subdivision of HES 407, by Fred A. Hartman Reg. No. 2405 S: "Cor. 5, Found"

- II. Found, a set stone 5 x 10 ins., 8 ins. out of the ground, marked 5 HES 407 on NW face (rcd: W face) and 2 HES 845 on SE face (rcd: S face), from which

A larch, 15 ins. dia., bears  $N6^{\circ}E$  (rcd:  $S4^{\circ}05'E$ ), 21.5 ft. (32.6 lks.) dist., scribe overgrown. (HES 407 rcd.)

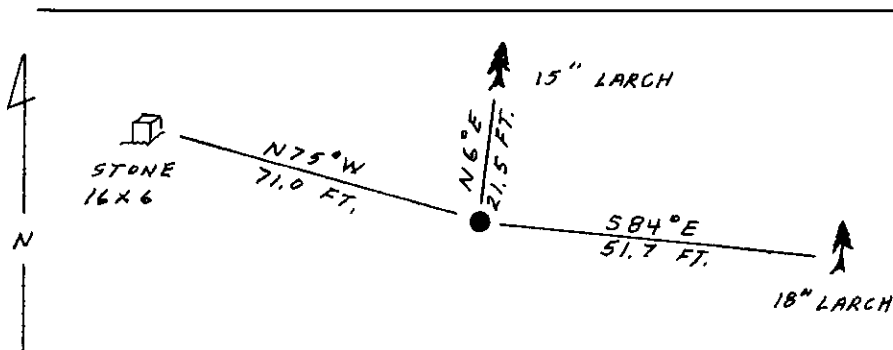
A larch, 18 ins. dia., bears  $S84^{\circ}E$ , 51.7 ft. (78.3 lks.) dist., scribe overgrown. (HES 845 rcd.)

A set stone 16x6 ins., 14 ins. out of ground, bears  $N75^{\circ}W$ , 71 ft. (107.8 lks.), marked WH5.

(HES 407 record: most likely one of the bearing rocks, to Cor. 5 of H.A. No. 56, list 1262, J. Teeters applicant).

- III. Painted red bands around the bearing trees and attached Land Survey Monument and Bearing Tree signs.

Set a 6 ft. galvanized steel guard post with Land Survey Marker and Property Boundary decals,  $S32^{\circ}E$ , 3 ft. Magntetic Declination:  $20^{\circ}30'$  East



SKETCH OF CORNER

## CERTIFICATION

I, Gary C. Crismon  
certify the information shown herein is true and correct.

*Gary C. Crismon*  
Signature Ground Party Chief

I, Alvah F. Hughes  
certify that this Corner Record correctly represents work performed by me or under my direction in compliance with the "Corner Recordation Act" (70-22-101, et seq., M.C.A.)

*Alvah F. Hughes*  
Signature of Surveyor

Date: 12/28/89 Reg. No. 7322

Employer: U.S. FOREST SERVICE

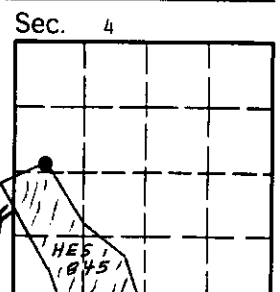
Office of Clerk and Recorder, County of Lincoln. This "corner record" was filed for record on Jan 9, 1990

was noted on the cross-index plat and is assigned page No. 4198, in

book No. \_\_\_\_\_

*Janet B. Sigel by Sue Smith*  
County Official

Cross Index No. 2 HES 845 T. 34 N. R. 33 W. P.M.M.



• - corner this sheet