

INSTRUCTIONS

1. Original and/or subsequent record used to evaluate the corner position.
2. Description of evidence found, note discrepancies in the record, state method of establishing lost or obliterated corners.
3. Description of monument and accessories set to perpetuate the corner position.
4. Sketch of corner, show all pertinent data which can best be shown in a sketch example, corner marking, topography ties, position of accessories, etc.
5. Certification must be signed and sealed by Land Surveyor registered in the State of Montana.
6. Fill in Cross Index & Section Diagram at bottom of sheet.

CERTIFIED CORNER RECORDATION

Corner 2 H.E.S. 732 in Unsurveyed T. 34N R. 33W P.M.M. LINCOLN County

I. 1917 HES 732 Record: Set a small stone, marked with a cross (x), under a sandstone 30X5X6 ins., 20 ins., in the ground, marked 2 HES 732 on southeast face and a cross (x) on top for the exact corner point, from which:

A cross (x) on a larch tree 10 ins., dia., bears S22°15'W 77 links dist.

A cross (x) on a larch tree 10 ins., dia., bears S54°15'W 77 links dist., each blazed and scribed 2 HES 732 BT. Raise a mound of earth 4 ft. base, 2 ft. high SE of corner.

II. I found a stone 5X12 ins., marked 2 HES 732 on southeast face and a cross (x) on top of stone; from which:

A dead larch 12 ins. dia., bears S54°W 51 ft. dist. scribing partially visible. Evidence of mound of earth SE of corner.

A Grand Fir 13 ins. dia. bears S74°E 27.5 ft. dist. healed face. (no record)

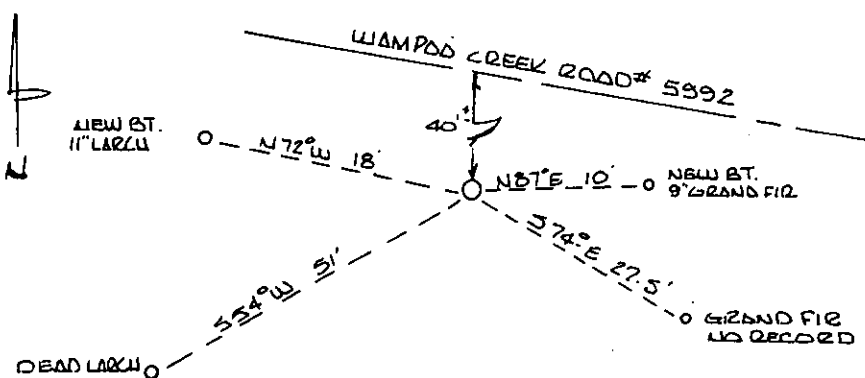
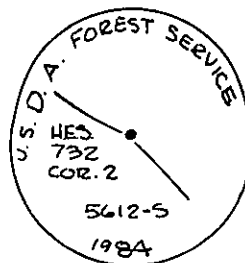
III. At the corner point, I set an aluminum pipe, 30 ins., long 22 ins., in the ground with 3 1/4 aluminum cap marked as shown; I scribed and marked 2 bearing trees:

A larch 11 ins. dia. bears N72°W 18 ft. dist. scribed 2 HES 732 BT.

A grand fir 9 ins. dia. bears N87°E 10 ft. dist. scribed 2 HES 732 BT.

Painted red bands around bearing trees and attached "BT" and "Attention" signs. Raised rock collar around the cap and buried stone alongside pipe.

Placed a 6 ft. carsonite fiberglass post with a survey marker decal attached, 1 ft. north of pipe.



SKETCH OF CORNER

CERTIFIED
MONTANA
I, THOMAS H. HILL
certify the information herein is true and correct.
Signature of Ground Party Chief
THOMAS C. HILL
I, THOMAS C. HILL
certify that this Corner Record correctly represents work performed by me or under my direction in compliance with the "Corner Recordation Act" (70-22-201, 4th sec. 101).
Signature of Surveyor & Seal
Date: 12/10/84 Reg. No. 5612-S
Employer: U.S.D.A. FOREST SERVICE

Office of Clerk and Recorder, County of Lincoln. This "corner record" was filed for record on December 13 '84

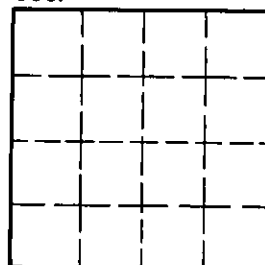
was noted on the cross-index plat and is assigned page No. 2847, in

book No. _____

James B. F. Sieges by Karen R. Kample
County Official Deputy

Cross Index No. _____ T. 34 R. 33 P.M.M.
Adopted July 1, 1981, Montana Board of Professional Engineers & Land Surveyors

Sec.



• corner this sheet

INSTRUCTIONS TO SURVEYORS FOR COMPLETION OF CERTIFIED CORNER RECORDATION FORMS

I. ORIGINAL AND/OR SUBSEQUENT RECORD:

This item should describe or quote those portions of the original or subsequent record which were used in evaluating the corner position. The original record will usually be the General Land Office field notes. Subsequent record can come from several sources: Previously filed corner records, maps and plats, private and public records, etc. Some of the subsequent record, even though not in the public record, but known to have validity by the surveyor, may be quoted and appropriately noted.

The record data helps support the reestablished corner position because it clearly shows what history the surveyor based his corner position on. In some cases, however, the record may be unknown or not pertinent. A statement to that effect should appear on the corner record.

II. DESCRIPTION OF EVIDENCE FOUND OR METHOD OF LOCATING CORNER POSITION:

This item will describe the original or subsequent record evidence found. If portions of the found evidence cannot be reconciled with the record, then the disregarded record should be noted, and, if possible, an opinion as to its cause narrated.

If no physical evidence of the original or subsequent monuments and accessories can be found, then the method used to reestablish the lost or obliterated corner (single proportion, fence intersection, parol evidence, terrain calls, centerline of road, etc.) shall be indicated.

III. DESCRIPTION OF MONUMENTS AND ACCESSORIES SET TO PERPETUATE THE CORNER POSITION:

This item should list all details about the corner and its location which will help exclusively identify the corner position; including size and type of monument, how marked if not shown in sketch, and distinguishing topographic calls which help locate the corner. In many cases, instructions on how to find the corner should be included.

References or ties to other corners are optional and may be drawn on the face or back of the corner record form, or references to Certificate of Survey may be made. Separate drawings may be attached to the corner form.

If state plane coordinate values for the corner position are shown, then the control upon which they are based should be indicated.

IV. SKETCH OF CORNER:

This item will usually show how a found or set corner is marked and may also show topography or accessory monuments found or set and their relation to the corner. There is no stipulated format; the sketch could be transcribed field note entries.

V. CERTIFICATION:

The name and signature of the ground party chief is optional.

The Surveyor who performed or directed the field work which is depicted on the "Certified Corner Record" shall sign and affix his seal in the Certification.

The employer blank is optional but useful in tracking down original field note data or adjacent record if, in the future, questions arise about the corner.

VI.

The Cross Index at the bottom of the page should be completed by the Surveyor. Only the single Township Index where the corner is filed shall be completed.

The lower righthand corner is a corner location diagram and should have the pertinent section filled in at the top and a closed circle indicating the appropriate corner position in the section filled in. This is intended to be an aid in searching the "Record" once it has been filed.