

## INSTRUCTIONS

1. Original and/or subsequent record used to evaluate the corner position.
2. Description of evidence found, note discrepancies in the record, state method of establishing lost or obliterated corners.
3. Description of monument and accessories set to perpetuate the corner position.
4. Sketch or corner, show all pertinent data which can best be shown in a sketch example, corner marking, topography ties, position of accessories, etc.
5. Certification must be signed and sealed by Registered Land Surveyor in State of Montana.
6. Fill in Cross Index & Section Diagram at bottom of sheet.

## CERTIFIED CORNER RECORDATION

Corner No. 1 M.S. 4968 T. 34N R. 33W P.M.M. Lincoln County

- I. Original survey of the mining claim known as the Keystone lode mineral survey No. 4968 was performed by Abram L. Jaqueth in October, 1897. From the following record of corner No. 1:

Set a pine post 6 inches square, 5 feet long, 2 feet deep marked 1-4968

A blazed fir, 12 inches in diameter, marked B.T. 1-4968, bears N41°00'W, 11.5 feet.

A blazed white pine tree, 14 inches in diameter, marked B.T. 1-4968 bears S70°15'E, 7.9 feet.

U.S. Location Monument No. 4968 bears N31°03'W, 202.3 feet.

- II. At corner position found the following references:

A douglas fir stump, 13 inches in diameter by 45 inches high, scribing 1 49 found on a weathered unhealed face.

The rotten remains of a pine, approximately 15 inches in diameter, found burnt remnants of the face blaze.

U.S. Location Monument - monument is in good condition with markings  
+ USLM visible.  
4968

At the intersections of record bearing and distances I find no evidence of the original pine post, with points falling in the tread of an old trail.

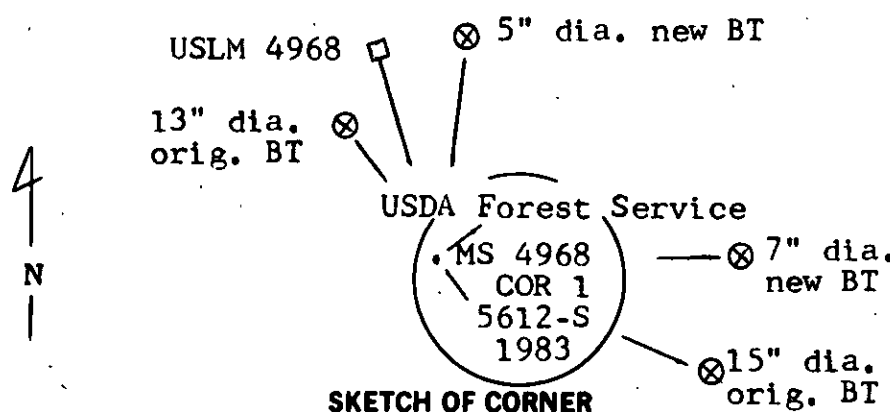
In finding conflicts with record, as noted below, I set a permanent monument at the intersection of distances from the bearing trees.

- III. At this intersection, I set a 2½ inch diameter by 30 inches long aluminum post with a 3 inch diameter aluminum cap marked as shown in sketch of corner. From which the following references:

Douglas fir stump 13 inches in diameter bears N35°47'W (N41°00'W), 11.5 feet distance.

Rotten pine, 15 inches in diameter, bears S71°56'E (S70°15'E), 7.9 feet distance.

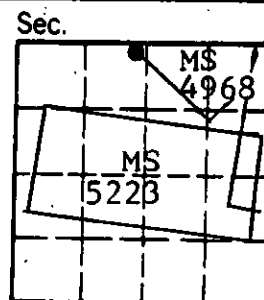
-over-



CERTIFICATION  
I, Michael L. Richey  
certify the information shown herein is true and correct.  
Michael L. Richey  
Signature of Corner Party Chief  
I, Thomas Hill  
certify that this Corner Record correctly represents work performed by me or under my direction in compliance with the Corner Recordation Act (70-2410, et seq., M.D.A.)  
Thomas Hill  
Signature of Surveyor & Seal  
Date: 9/10/83 Reg. No. 5612-S  
Employer: USDA Forest Service

Office of Clerk and Recorder, County of Lincoln. This "corner record" was filed for record on the January 23 day of 1984 was noted on the cross-index plat and is assigned page No. 2400, in book No. \_\_\_\_\_  
Janet B. Siegel by Betty L. Conner  
County Official deputy

Cross Index No. 1/4968 T. 34N R. 33W P.M.M.



• corner this sheet

# INSTRUCTIONS TO SURVEYORS FOR COMPLETION OF CERTIFIED CORNER RECORDATION FORMS

## I. ORIGINAL AND/OR SUBSEQUENT RECORD:

This item should describe or quote those portions of the original or subsequent record which were used in evaluating the corner position. The original record will usually be the General Land Office field notes. Subsequent record can come from several sources: Previously filed corner records, maps and plats, private and public records, etc. Some of the subsequent record, even though not in the public record, but known to have validity by the surveyor, may be quoted and appropriately noted.

The record data helps support the reestablished corner position because it clearly shows what history the surveyor based his corner position on. In some cases, however, the record may be unknown or not pertinent. A statement to that effect should appear on the corner record.

## II. DESCRIPTION OF EVIDENCE FOUND OR METHOD OF LOCATING CORNER POSITION:

This item will describe the original or subsequent record evidence found. If portions of the found evidence cannot be reconciled with the record, then the disregarded record should be noted, and, if possible, an opinion as to its cause narrated.

If no physical evidence of the original or subsequent monuments and accessories can be found, then the method used to reestablish the lost or obliterated corner (single proportion, fence intersection, parol evidence, terrain calls, centerline of road, etc.) shall be indicated.

## III. DESCRIPTION OF MONUMENTS AND ACCESSORIES SET TO PERPETUATE THE CORNER POSITION:

This item should list all details about the corner and its location which will help exclusively identify the corner position; including size and type of monument, how marked if not shown in sketch, and distinguishing topographic calls which help locate the corner. In many cases, instructions on how to find the corner should be included.

References or ties to other corners are optional and may be drawn on the face or back of the corner record form, or references to Certificate of Survey may be made. Separate drawings may be attached to the corner form.

If state plane coordinate values for the corner position are shown, then the control upon which they are based should be indicated.

## IV. SKETCH OF CORNER:

This item will usually show how a found or set corner is marked and may also show topography or accessory monuments found or set and their relation to the corner. There is no stipulated format; the sketch could be transcribed field note entries.

## V. CERTIFICATION:

The name and signature of the ground party chief is optional.

The Surveyor who performed or directed the field work which is depicted on the "Certified Corner Record" shall sign and affix his seal in the Certification.

The employer blank is optional but useful in tracking down original field note data or adjacent record if, in the future, questions arise about the corner.

## VI.

The Cross Index at the bottom of the page should be completed by the Surveyor. Only the single Township Index where the corner is filed shall be completed.

The lower righthand corner is a corner location diagram and should have the pertinent section filled in at the top and a closed circle indicating the appropriate corner position in the section filled in. This is intended to be an aid in searching the "Record" once it has been filed.

USLM 4968, bears N30°58'W, 202.1 (I find 202.3 to agree if slope chained)

I established the following new references:

Douglas fir, 5 inches in diameter, bears N10°08'W, 37.50 feet distance, scribed X BT on a double blaze.

Douglas fir, 7 inches in diameter, bears N87°29'E, 12.10 feet distance, scribed 1-4968 BT on a single blaze.

