

INSTRUCTIONS

1. Original and/or subsequent record used to evaluate the corner position.
2. Description of evidence found, note discrepancies in the record, state method of establishing lost or obliterated corners.
3. Description of monument and accessories set to perpetuate the corner position.
4. Sketch of corner, show all pertinent data which can best be shown in a sketch example, corner marking, topography ties, position of accessories, etc.
5. Certification must be signed and sealed by Land Surveyor registered in the State of Montana.
6. Fill in Cross Index & Section Diagram at bottom of sheet.

CERTIFIED CORNER RECORDATION

Corner: 5 HES 113, Section 17 T. 34N. R. 34W. P.M.M. Lincoln County
5 & CC HES 750, Section 17

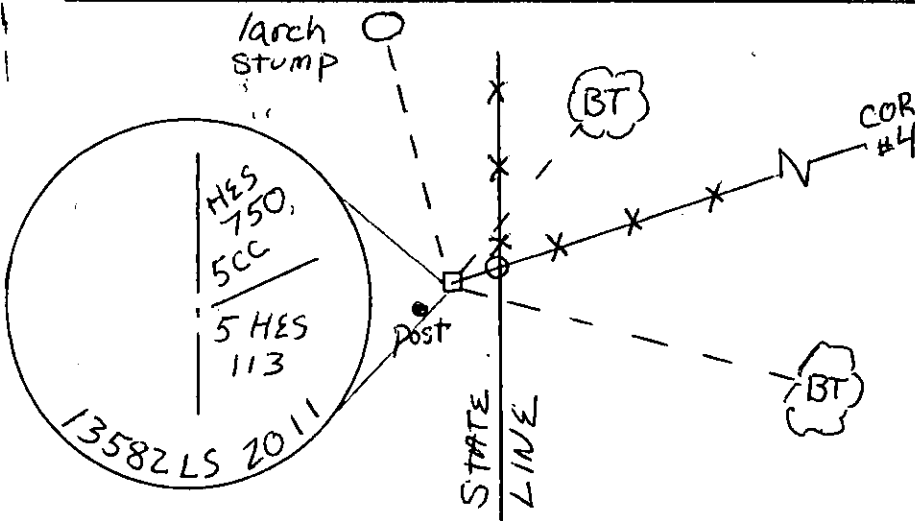
1913 GLO Record: 13.66 chs. Set a slate stone, 24 ins. long, 12 ins. wide, 5 ins. thick, set 14 ins. in the ground, for cor. No. 5, on State line with a (x) cut in the top at the exact cor. point and 5 H E S 113 cut on the SE face; dug a pit 24x24x12 ins. on each line 7 ft. dist. and raised a mound of earth, 4 ft. base, 2 ft. high, SE. of cor.

1917 GLO Record 19.86 chs. To angle and closing point on Montana-Idaho State boundary, identical with Cor. No. 5 of H.E.S. No. 113, a slatestone 10x12x6 ins. above ground, marked and witnessed as described by the Surveyor General, and identical in point for list Cor. No. 1. I adopt this stone for Cor. No. 5 and closing Cor. of this survey and mark it C C H E S 750 on NE face. From the cross (x) on top A cross (x) on a larch tree, 12 ins. dia. bears N5°00'W. 112 links distant. A cross (x) on a red fir, 12 ins. dia. bears N37°45'E. 110 links distant; each blazed and scribed 5 H E S 750 BT. Raise a mound of earth 4 ft. base, 2 ft. high, NE of corner.

Evidence Found: Found a stone 20"x13"x5" 2"-5" under the surface leaning at a 45° angle to the southeast with the upper face marked CC ES 50 (face appears to be damaged) and the underside marked 5 HES 113 on west side of fence corner. Found a low cut and rotting 20" dia. larch stump at approximate record from stone for possible NW BT-no scribing found. I tilted stone to upright position to NW. Larch stump bears N4°W and is record distance from stone measured to face of stump. No other BT evidence found. Stone lines up with old fence posts to east marking the north line of HES 113 and is 0.3 ft. west of the N-S State Line. Proportional position per the survey of HES 750 is 1.1 ft. north of the intersect point on the State Line from the upright stone to Corner #4. I accept the position of the upright stone.

Monument and Accessories Set: Set a 3 1/4" dia. aluminum cap on a 5/8" x 30" rebar at the position of the upright stone. Buried stone to the SE of mon. From monument:
A 16" larch bears N35°E, 15.5 ft.
A 12 1/2" lodgepole pine bears S84°E, 62.4 ft.

BT tags were attached to trees. Distances were measured to the side center of trees. BTs were not scribed. Placed steel fencepost with Conservation Easement Boundary sign attached SW 0.5 ft fm mon. Corner falls on level ground with cleared trails to the west and south and cut over timber to the NE.



SKETCH OF CORNER

CERTIFICATION

I, Steven R. Moyer
certify the information shown herein is true and correct.

Steven R. Moyer
Signature of Ground Party Chief

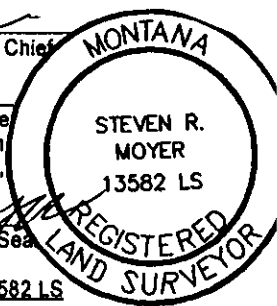
I, Steven R. Moyer
certify that this Corner Record correctly re-
performed by me or under my direction in
the "Corner Recordation Act" (70-22-101,

Steven R. Moyer
Signature of Surveyor & Seal

Date: 7-2011

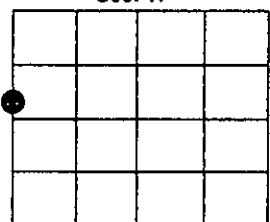
Reg. No. 13582 LS

Employer: North Star Surveying, Inc.
347 Mountain Meadows Road
Naples, Idaho 83847
208.267.6209



Office of Clerk and Recorder, 234209 BOOK: CCR CC&R'S PAGE: 11903 Pages: 1
record" was filed for record o STATE OF MONTANA LINCOLN COUNTY
RECORDED: 08/15/2011 4:20 KOI: CC&R'S
was noted on the cross-index TAMY D. LAUER CLERK AND RECORDER
FEE: \$0.00 BY: Heather Lauer
TO: FILED

Sec. 17



• — Corner this sheet

Cross Index No. 5 HES 113 T. 34N R. 34W PMM
5 CC HES 750

Adopted July 1, 1981, Montana Board of Professional Engineers & Land Surveyors