

INSTRUCTIONS

1. Original and/or subsequent record used to evaluate the corner position.
2. Description of evidence found, note discrepancies in the record, state method of establishing lost or obliterated corners.
3. Description of monument and accessories set to perpetuate the corner position.
4. Sketch or corner, show all pertinent data which can best be shown in a sketch example, corner marking, topography ties, position of accessories, etc.
5. Certification must be signed and sealed by Registered Land Surveyor in State of Montana.
6. Fill in Cross Index & Section Diagram at bottom of sheet.

CERTIFIED CORNER RECORDATION

Corner WE 1/64 S33 T. 34N R. 34W P.M.M. Lincoln County

Date of work: June 25, '8

I. No previous record of monumentation on file.

II. No evidence found on ground.

III. At the determined corner point: Set a 2½"x30" alum. pipe appr. 15" in the ground, collar of stone. Alum. cap mkr. as shown:

From which:

A 4" pine bears S06°E., 12.0 ft. Mkr.: "XBT."

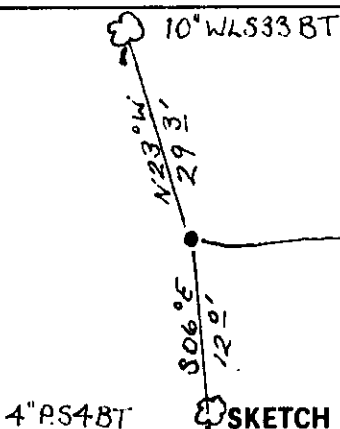
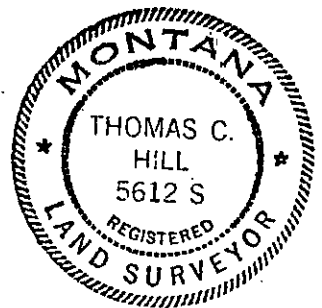
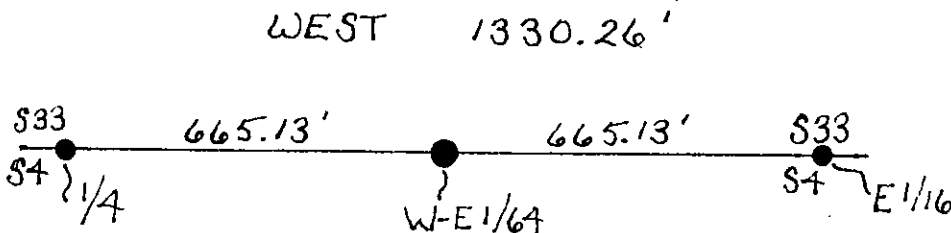
A 10" western larch bears N23°W., 29.3 ft. Mkr.: "1/64S33BT."

Attached location poster to a 4" pine which bears N02°E., 5.7 ft.

Bearings taken to center of tree, distance measured to nail at base of tree.

Painted red bands around Bt's, and attached BT signs.

N
No SCALE



SKETCH OF CORNER

CERTIFICATION

I, Anthony J. Bachman
certify the information shown herein is true and correct.

Signature Ground Party Chief

I, Thomas C. Hill
certify that this Corner Record correctly represents work performed by me or under my direction in compliance with the "Corner Recordation Act" (70-22-101, et seq., M.D.A.)

Signature of Surveyor & Seal

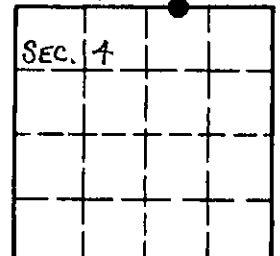
Date: 7-27-81 Reg. No. 5612-S

Employer: USFS

Office of Clerk and Recorder, County of Lincoln. This "corner record" was filed for record on the July 31st day of 1981, was noted on the cross-index plat and is assigned page No. 1176, in book No. 1

Cross Index No. A-11-12 T. 33 R. 34 P.M.M.
2-11-12 34 34

Sec. 33



• - corner this sheet