

CERTIFIED CORNER RECORDATION

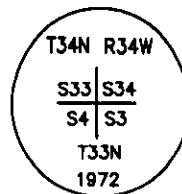
Corner 33 | 34
4 | 3 T. 34 N. R. 34 W. P.M.M. LINCOLN County

I. 1903 G.L.O. survey of the North Boundary of T. 33 N., R. 34 W. by Allen B. Benedict: Set a tamarack post and 4 bearing trees.

1967 B.L.M. Remonumentation by Joseph E. French: The cor. of secs. 3, 4, 33 and 34, as determined from the remains of the original bearing trees:

- A larch, 22 ins. diam, bears N63°E, 29 lks. dist., mkd. T34N R34W S34 BT.
- A fir stump, 12 ins. diam, bears S39 1/4°E, 27 lks. dist., mkd. T33N R34W S3 BT.
- A larch snag, 12 ins. diam, bears S5 1/2°W, 21 lks. dist., mkd. T33N R34W S4 BT.
- A larch, 21 ins. diam, bears N59°W, 44 lks. dist., mkd. with an overgrown blaze.

At the corner point
 Set an iron post, 30 ins. long, 2 1/2 ins. diam., 24 ins. in the ground, with brass cap mkd.



from which the new bearing trees:

- A cedar, 12 ins. diam, bears S62 1/4°E, 15 lks. dist., mkd. T33N R34W S3 BT.
- A cedar, 9 ins. diam, bears S41 1/4°W, 43 lks. dist., mkd. T33N R34W S4 BT.

II. Found a 2 in. diam. iron pipe, 6 ins. above the ground, firmly set with a 2 1/2 in. diam. brass cap marked as shown above, from which:

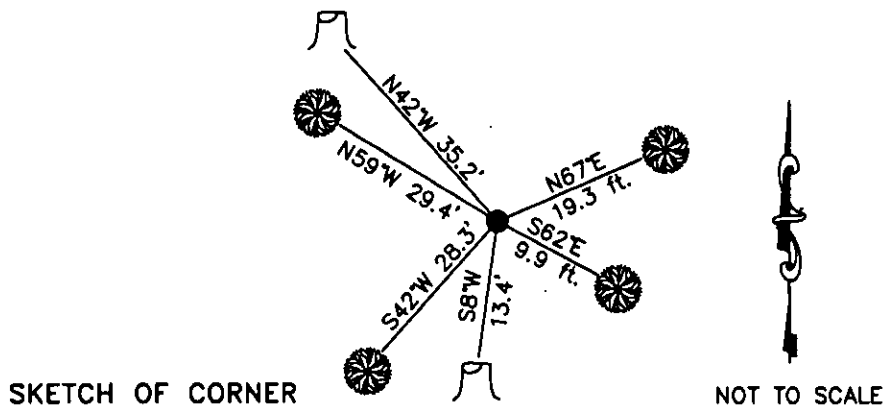
- A larch, 20 ins. diam, bears N67°E, 19.3 ft. dist., with 34 B visible.
- A cedar, 16 ins. diam, bears S62°E, 9.9 ft. dist., mkd. with a healed face.
- A cedar, 11 ins. diam, bears S42°W, 28.3 ft. dist., mkd. with visible scribe marks.
- A larch stump, 22 ins. diam., bears N59°W, 29.4 ft. dist. mkd. with a visible face.
- A larch stump, bears S8°W, 13.4 ft. dist. mkd. with T33N R34W S4 visible.

III. Established 1 new bearing tree:

- A hemlock, 9 ins. diam, bears N42°W, 35.2 ft. dist., mkd. T34N R34W S33 BT.

Painted red the scribed faces and 6 in. red bands on the bearing trees. Attached Land Survey Monument and Bearing Tree signs.

Date of Fieldwork: 5/9/2008
 Survey crew: Steve Boyer, Tom Hommel
 Magnetic declination: 20° East assumed
 Equipment used: Hand compass and loggers tape
 U.S. Forest Service, Supervisors Office, 31374 Hwy. 2, Libby, MT 59923 (406) 293-6211



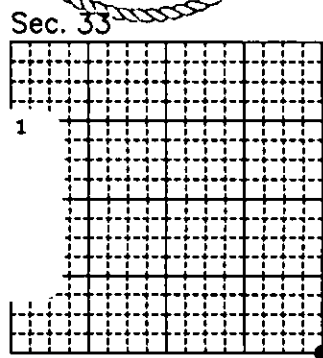
CERTIFICATION
 I, Thomas M. Hommel 10800LS
 certify the information shown herein is true and correct.
 Signature of Ground Party Chief
 I, Steven A. Boyer
 certify that this Corner Record correctly represents work performed by me or under my direction in compliance with the "Corner Recordation Act" MCA 90-22-101, et seq., MCA
 Signature of Surveyor & Seal
 Date: 2/5/2009 Reg. No. 9750LS
 Employer: U. S. Forest Service

Office of Clerk and Recorder, County of Lincoln

230223 BOOK: CCR CC&R'S PAGE: 11741 Pages: 1
 STATE OF MONTANA LINCOLN COUNTY
 RECORDED: 12/14/2010 11:55 KOI: CC&R'S
 TAMMY D. LAUER CLERK AND RECORDER
 FEE: \$0.00 BY: Leanne Sharp
 TO: FILED

Cross Index No. Z-13 T. 34N. R. 34W. P.M., MT

Adopted July 1, 1981, Montana Board of Professional Engineers & Land Surveyors



● corner this sheet