

INSTRUCTIONS

Q:CO-STD/152
Created 4/8/92

1. Original and/or subse
2. Description of eviden
3. Description of monun
4. Sketch of corner, shov
5. Certification must be
6. Fill in Cross Index &

179999 BOOK: CCR CC&R'S PAGE: 10680 Pages: 1
STATE OF MONTANA LINCOLN COUNTY
RECORDED: 10/18/2004 9:18 KOI: CC&R'S
CORAL M. CUMMINGS CLERK AND RECORDER
FEE: \$0.00 BY: *Jearnie Deann*
TO: FILED

corners.

why ties, position of accessories,

CERTIFIED CORNER RECORDATION

Corner W. 1/4 Sec. 29 only T. 34 North R. 34 West P.M.M. LINCOLN County

RECORD:

1994 Per Plat of Chapman Acres, Plat No. 5167 (Kenneth E. Davis, 4975-S), set 3-1/4" aluminum cap for the W. 1/4 corner of Section 29.

7/2004 Found 1/4 corner by Davis, 4975-S, a 3-1/4" aluminum cap. There is no corner recordation form on file at the Lincoln County Courthouse for this corner.

Subdivision of Fractional Sections: Per Section 3-88 of the 1973 Manual of Surveying Instructions it states that "where corresponding 1/4 section corners have not been or cannot be fixed, the subdivision-of-section lines shall be ascertained by running from the established corners north, south, east, or west, as the case may be, to the water course, reservation line, or other boundary of such fraction section, as represented on the official plat." This principal applies to Section 29, as it is indeed a "Fractional Section", closing upon the Montana - Idaho State line along its west boundary. In closing upon the State-Line boundary, the west one-quarter corner was never fixed/established. The correct position for the missing west one-quarter is determined by a "weighted-mean-bearing" based upon the north and south boundaries of Section 29. This is the standard method utilized and taught by the BLM, where conditions warrant.

At the point for the west 1/4 corner of Section 29 only, at the intersection of the Montana-Idaho state boundary and the "weighted mean bearing" run westerly from the opposing east one-quarter corner of Section 29, set 2-1/2"x30" aluminum pipe, set 26" in the ground with 3-1/4" U.S.D.A. aluminum cap.

Place 6' tall galvanized posts with "Property Boundary" and "Survey Monument" decals 3' E. And S. of the corner.

From which the bearing trees referencing the 1/4 corner by (Davis, 4975-S):

A 10" Fir, bears N. 34° E., 38.7', with a healed blaze.

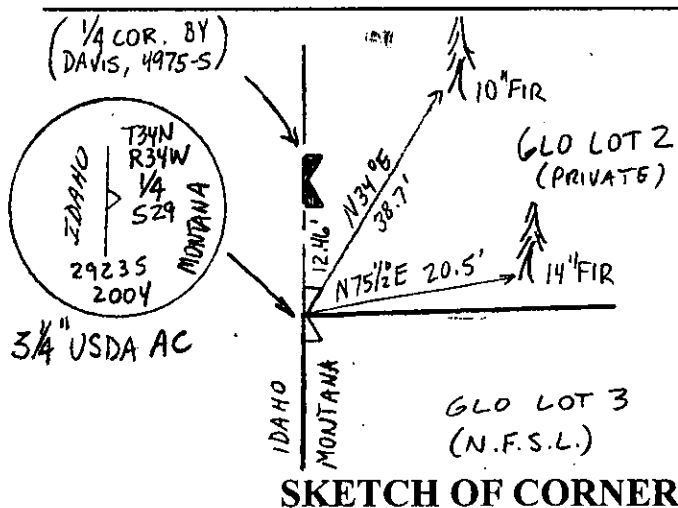
A 14" Fir, bears N. 75 1/2° E., 20.5', with "1/4 S29 BT" visible on an open blaze.

The 1/4 corner by (Davis, 4975-S), bears North, 12.46'.

Paint blazes and 6" band and posted "Bearing Tree" and "Land Survey Monument" on bearing trees. Place new bearing tree tags on BT's referencing the new 1/4 corner.

See Certificate of Survey on file at the Lincoln County Courthouse.

See reverse side for Section 29 "weighted-mean-bearing" information.



CERTIFICATION

I, Jason Culp
certify the information shown herein is true and correct.

Jason Culp
Signature Ground Party Chief

I, Richard A. Ainsworth
certify that this Corner Record correctly
represents work performed by me or under my
direction in compliance with the Corner
Recordation Act (70-22-101, et seq., M.C.A.)

Richard A. Ainsworth
Signature of Surveyor & Seal
AINS WORTH

Date: 7/2004 R2928 S2925

Employer: Professional Consultants, Inc.

SKETCH OF CORNER

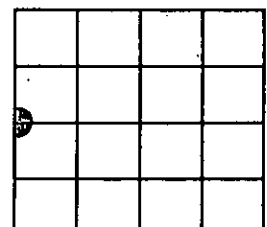
Office of Clerk and Recorder, County of LINCOLN. This "corner
record" was filed for record on 10-18-04

was noted on the cross-index plat and is assigned page No. 179999, in

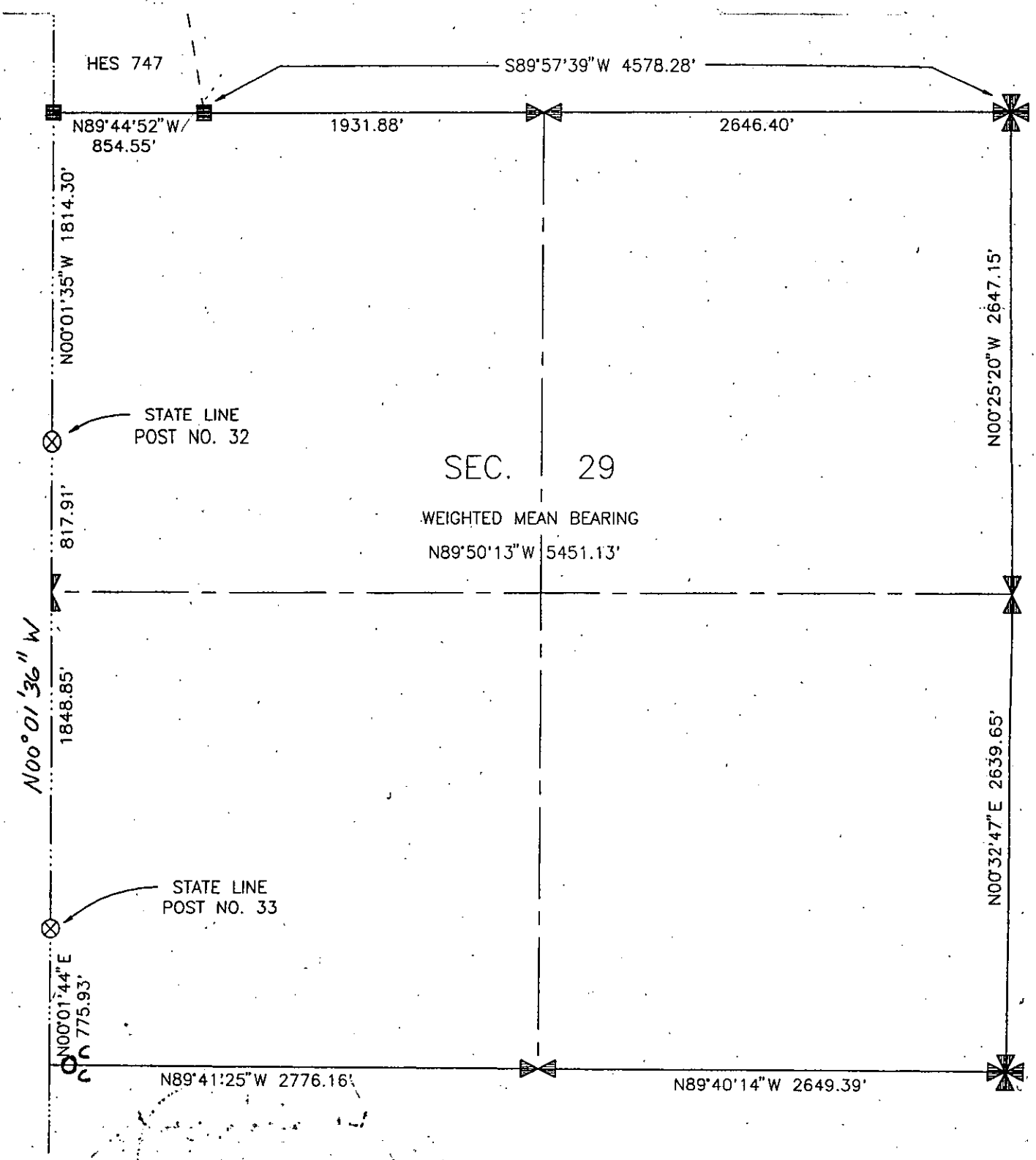
book No. 10680

page

Jearnie Deann
County Official



Handwritten scribble



Handwritten notes:
TO B-1-01
999776
S. 29-01