

1. Original and/or subsequent
2. Description of evidence
3. Description of monument
4. Sketch of corner, show a
5. Certification must be sig
6. Fill in Cross Index & Se

INSTRUCTIONS

179997 BOOK: CCR CC&R'S PAGE: 10678 Pages: 1
STATE OF MONTANA LINCOLN COUNTY
RECORDED: 10/18/2004 9:15 KOI: CC&R'S
CORAL M. CUMMINGS CLERK AND RECORDER
FEE: \$0.00 BY: *Jeannie Dennis*
TO: FILED

Q:CO-STD/152
Created 4/8/92
mers.

tics, position of accessories,

CERTIFIED CORNER RECORDATION

Corner NW. 1/16 Sec. 29 T. 34 North R. 34 West P.M.M. LINCOLN County

RECORD:

None Previous

FOUND: 7/2004

At the position for the NW. 1/16 corner, as determined by standard survey methods, set 5/8"x30" rebar, 30" in the ground with 3-1/4" U.S.D.A. aluminum cap.

Place 6' tall galvanized posts with "Property Boundary" and "Survey Monument" 3' E. and N. of the corner.

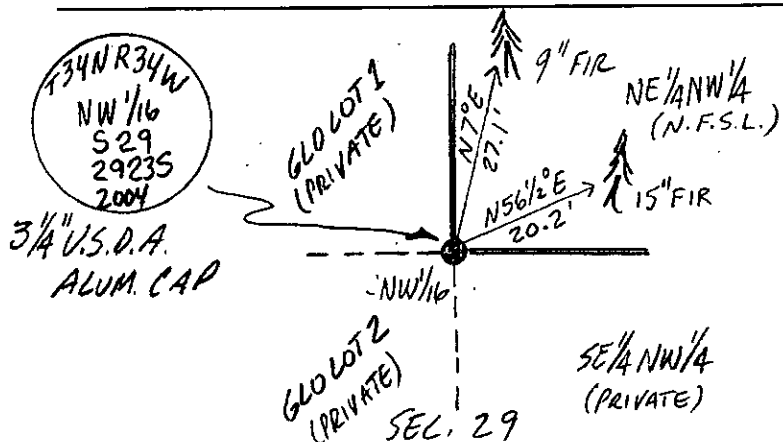
From which:

A 9" Fir, bears N.7°E., 27.1', marked: "X" BT.

A 15" Fir, bears N.56 1/2°E., 20.2', marked: NW1/16 S29 BT.

Paint blaze and 6" band and posted "Bearing Tree" and "Land Survey Monument" on bearing trees.

See Certificate of Survey on file at the Lincoln County Courthouse.



SKETCH OF CORNER

CERTIFICATION

I, Jason Culp
certify the information shown herein is true and correct.

Jason Culp
Signature Ground Party Chief

I, Richard A. Ainsworth
certify that this Corner Record correctly represents work performed by me or under my direction in compliance with the Corner Recordation Act (70-22-101, et seq., M.C.A.)

Richard A. Ainsworth
Signature of Ainsworth

Date: 7/2004 Reg. No. 2923 S
Employer: Professional Consultants, Inc.

Office of Clerk and Recorder, County of LINCOLN. This "corner record" was filed for record on 10-18-04 was noted on the cross-index plat and is assigned page No. 17997, in

book No. 10678
page

Jeannie Dennis
County Official

