

1. Original and/or s
2. Description of c
3. Description of m
4. Sketch of corner,
5. Certification mu
6. Fill in Cross Ind

INSTRUCTIONS  
179995 BOOK: CCR CC&R'S PAGE: 10676 Pages: 1  
STATE OF MONTANA LINCOLN COUNTY  
RECORDED: 10/18/2004 9:13 KOI: CC&R'S  
CORAL M. CUMMINGS CLERK AND RECORDER  
FEE: \$0.00 BY: *Jeannie Ainsworth*  
TO: FILED

Q:CO-STD/152  
Created 4/8/92

ated corners.

ography ties, position of accessories,

## CERTIFIED CORNER RECORDATION

Corner W. 1/16 Sec. 29 & 32 T. 34 North R. 34 West P.M.M. LINCOLN County

### RECORD:

None Previous

### FOUND: 7/2004

At the position for the W. 1/16 corner, as determined by standard survey methods, set 5/8"x30" rebar, 30" in the ground with 3-1/4" U.S.D.A. aluminum cap.

Place 6' tall galvanized posts with "Property Boundary" and "Survey Monument" 3' W. and N. of the corner.

From which:

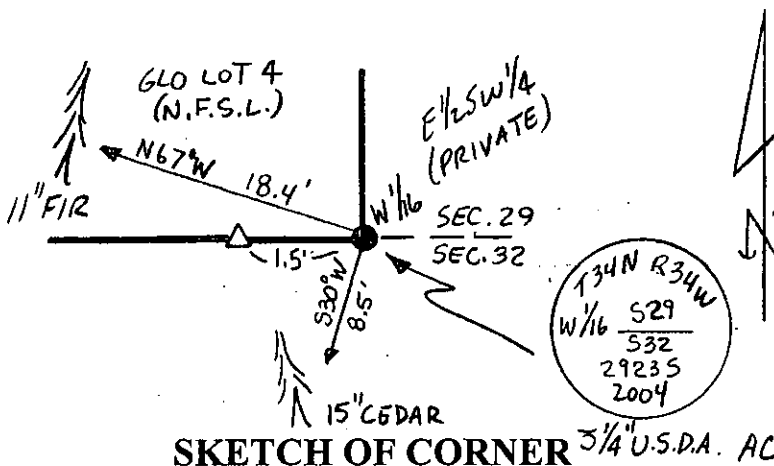
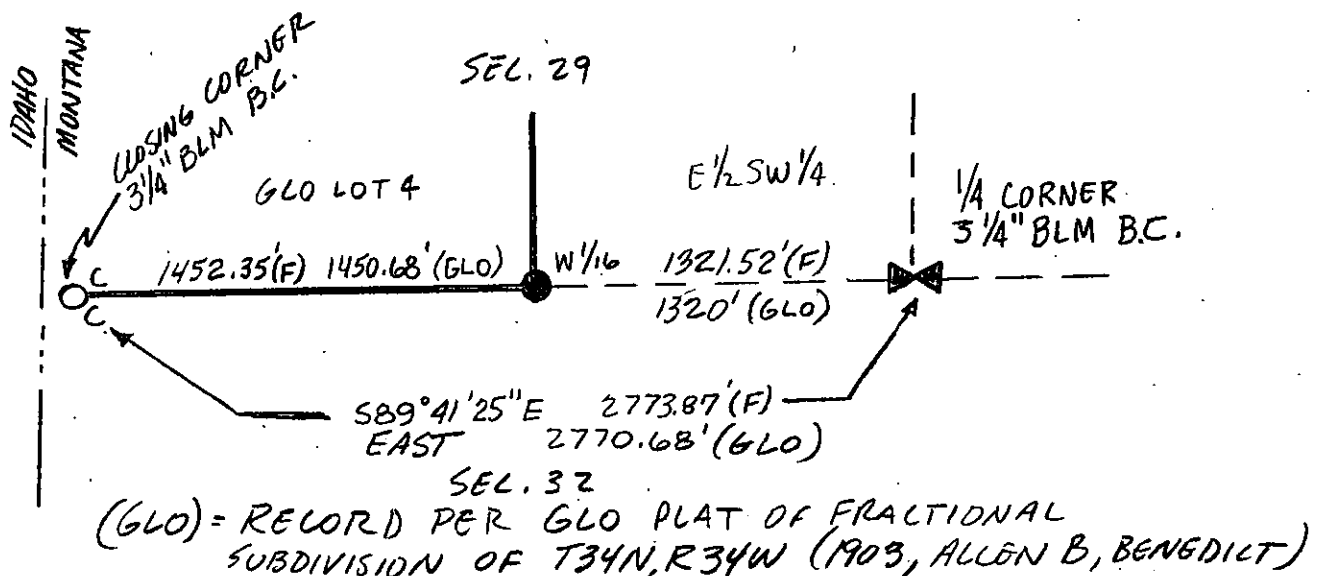
A 11" Fir, bears N.67°W., 18.4', marked: W1/16 S29 BT.

A 15" Cedar, bears S.30°W., 8.5', marked: W1/16 S32 BT.

A 5/8" rebar with 1-1/4" yellow plastic cap lies 1.5' W. of corner.

Paint blaze and 6" band and posted "Bearing Tree" and "Land Survey Monument" on bearing trees.

See Certificate of Survey on file at the Lincoln County Courthouse.



SKETCH OF CORNER 3/4" U.S.D.A. AC

### CERTIFICATION

I, Jason Culp  
certify the information shown herein is true and correct.

Signature Ground Party Chief

I, Richard A. Ainsworth  
certify that this Corner Record correctly represents work performed by me or under my direction in compliance with the Corner Recordation Act (70-22-101, et seq., M.C.A.)

Signature of Surveyor & Seal

Date: 7/2004

Employer: Professional Consultants, Inc.

Office of Clerk and Recorder, County of LINCOLN. This "corner record" was filed for record on 10-18-04

was noted on the cross-index plat and is assigned page No. 179995, in

book No. 10676

County Official