

1. Original and/o
2. Description of
3. Description of
4. Sketch of corn
5. Certification n
6. Fill in Cross In

INSTRUCTIONS  
179993 BOOK: CCR CC&R'S PAGE: 10674 Pages: 1  
STATE OF MONTANA LINCOLN COUNTY  
RECORDED: 10/18/2004 9:11 KOI: CC&R'S  
CORAL M. CUMMINGS CLERK AND RECORDER  
FEE: \$0.00 BY: *Joanne Deane*  
TO: FILED

Q:CO-STD/152  
Created 4/8/92

terated corners.

opography ties, position of accessories,

## CERTIFIED CORNER RECORDATION

Corner Center-West 1/16 Sec. 29 T. 34 North R. 34 West P.M.M. LINCOLN County

### RECORD:

None Previous.

7/2004

At the point for the CW 1/16 corner as determined by standard survey methods, set 5/8"x7" aluminum drive-rod, 76" in ground, with 3-1/4" U.S.D.A. aluminum cap.

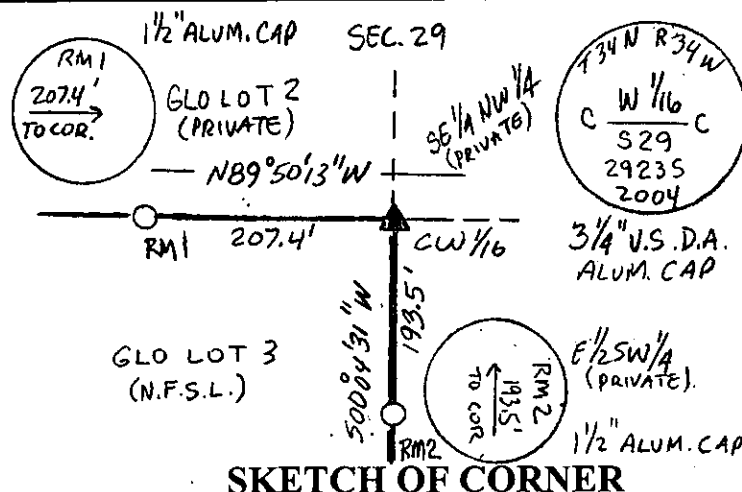
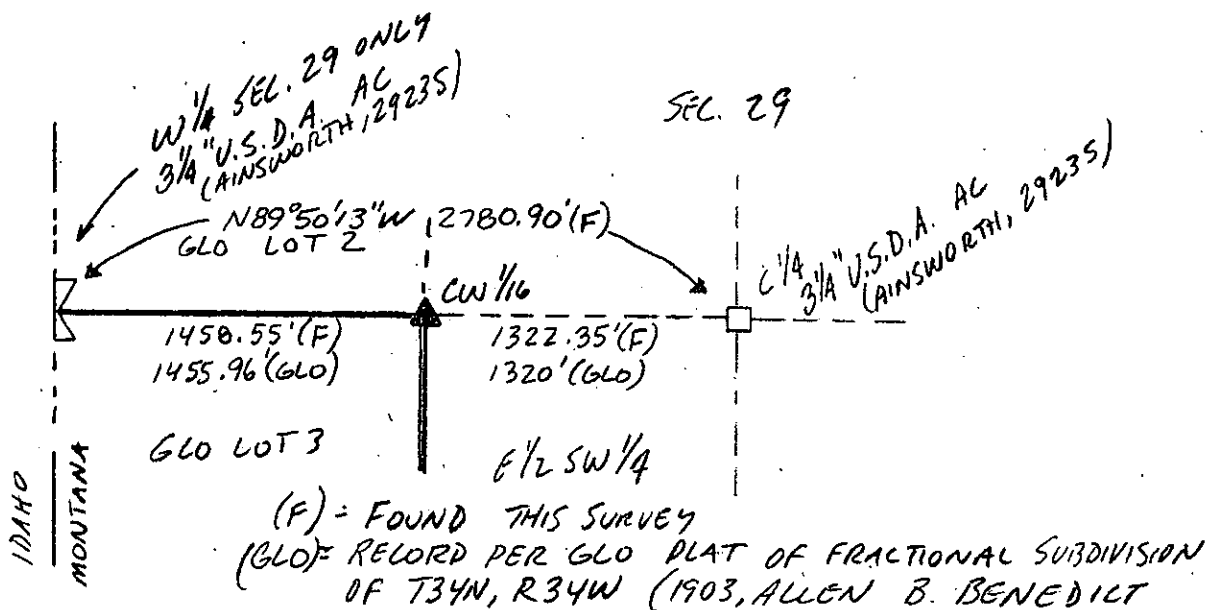
Place 6' tall galvanized posts with "Property Boundary" and "Survey Monument" 1' S. and W. of the corner.

The position for the CW 1/16 falls in an open, swampy pasture and there are no suitable bearing trees available within limits, so I set the following reference monuments (RM's):

RM1 Set 1/2"x18" rebar with 1-1/2" aluminum cap flush with ground, which bears N.89°50'13"W., 207.4'. Place 6' galvanized post with "Survey Monument" decal 1' E. of RM 1.

RM2 Set 1/2"x18" rebar with 1-1/2" aluminum cap flush with ground, which bears S.00°04'31"W., 193.5'. Place 6' galvanized post with "Survey Monument" decal 1' N. of RM2.

See Certificate of Survey on file at the Lincoln County Courthouse.



SKETCH OF CORNER

### CERTIFICATION

I, Jason Culp  
certify the information shown herein is true and correct.

Signature Ground Party Chief

I, Richard A. Ainsworth  
certify that this Corner Record correctly represents work performed by me or under my direction in compliance with the "Corner Recordation Act" (70-22-101, et seq., M.C.A.)

Signature of Recorder Seal \*

Date: 7/2004 Reg. No. 2923 S

Employer: Professional Consultants, Inc.

Office of Clerk and Recorder, County of LINCOLN. This "corner record" was filed for record on 10-18-04

was noted on the cross-index plat and is assigned page No. 179993, in book No. 10674

page Joanne Deane County Official

Sec.29

