

lost or obliterated corners.

marking, topography ties, position of accessories,

CERTIFIED CORNER RECORDATION

Corner 1/4 Corner Secs. 20 & 29 T. 34 North R. 34 West P.M.M. LINCOLN County

RECORD:

GLO 1903: Set a limestone, 18"x8"x6", 12" in the ground for the 1/4 corner of Sections 20 & 29, marked "1/4" on the N. face.

From which:

A 7" Pine, bears S.35 1/2°E., 21 links, marked: 1/4 S29 BT.

A 8" Pine, bears N.2 1/2°W., 12 links, marked: 1/4 S20 BT.

7/2004

Could find no evidence of the original corner or accessories. There is evidence of extensive timber harvest within and around the corner position.

At the point for the 1/4 corner at proportionate measure, set 2-1/2"x30" aluminum pipe, set 16" in the ground to bedrock, with 3-1/4" U.S.D.A. aluminum cap. Raise a 20" diam., 10" high mound of stone around the monument.

Place 6' tall galvanized post with "Survey Monument" decal 1' W. of corner.

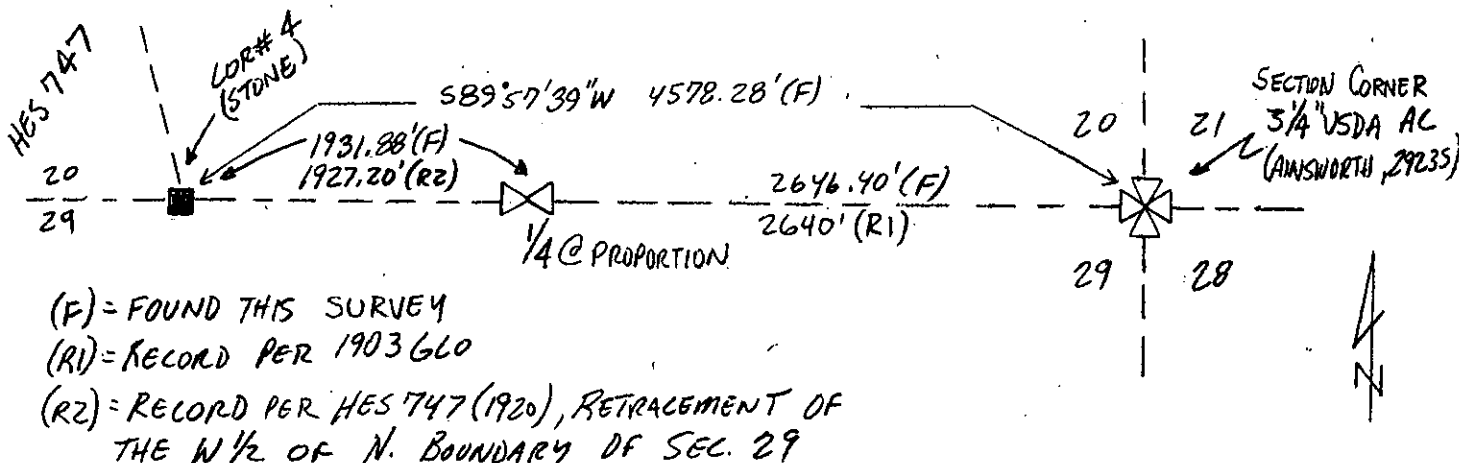
From which:

A 18" Fir, bears N. 54° W., 34.6', marked: 1/4 S20 BT and "X" at breast height.

A 21" Fir, bears S. 49° W., 30.4', marked: 1/4 S29 BT.

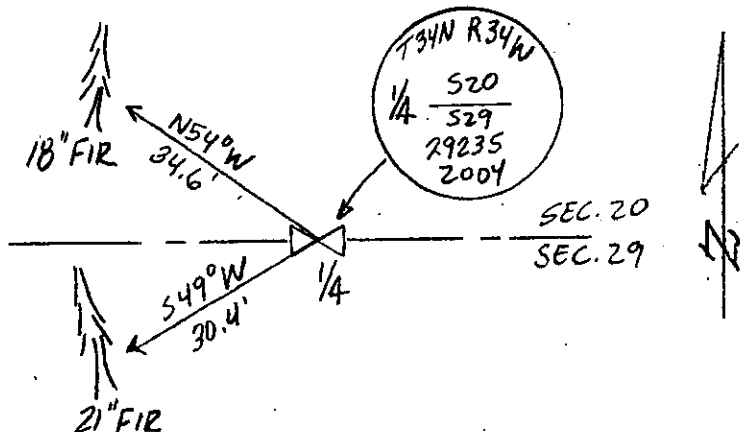
Paint blaze and 6" band and posted "Bearing Tree" and "Land Survey Monument" on bearing trees.

See Certificate of Survey on file at the Lincoln County Courthouse.



(F) = FOUND THIS SURVEY
(R1) = RECORD PER 1903 GLO

(R2) = RECORD PER HES 747 (1920), RETRACEMENT OF THE W 1/2 OF N. BOUNDARY OF SEC. 29



SKETCH OF CORNER

CERTIFICATION

I, Jason Culp
certify the information shown herein is true and correct.

Jason Culp
Signature Ground Party Chief

I, Richard A. Ainsworth
certify that this Corner Record correctly represents work performed by me or under my direction in compliance with the "Corner Recordation Act" (70-22-101, et seq., M.C.A.)

Richard A. Ainsworth
Signature of Surveyor & Seal
2923 S

Date: 7/2004 Reg. No. 2923 S
Employer: Professional Consultants, Inc.

Office of Clerk and Recorder, County of LINCOLN. This "corner record" was filed for record on 10-18-04

was noted on the cross-index plat and is assigned page No. 179992, in

book No. 10673

Joanne Dennis
County Official

Sec. 29

