

1. Original and/or subse
2. Description of evide
3. Description of monu
4. Sketch of corner, sho
5. Certification must be
6. Fill in Cross Index &

INSTRUCTIONS
179991 BOOK: CCR CC&R'S PAGE: 10672 Pages: 1
STATE OF MONTANA LINCOLN COUNTY
RECORDED: 10/18/2004 9:09 KOI: CC&R'S
CORAL M. CUMMINGS CLERK AND RECORDER
FEE: \$0.00 BY: *Jeannie Dennis*
TO: FILED

Q:CO-STD/152
Created 4/8/92

corners.

phy ties, position of accessories,

CERTIFIED CORNER RECORDATION

Corner Corner #5, H.E.S. 747, Sec. 20 T. 34 North R. 34 West P.M.M. LINCOLN County

RECORD:

GLO 1920: At the angle point and closing point between Post 31 and 32 on Montana-Idaho state boundary, which is established for Cor. No. 5 and closing corner.
Place a small stone marked with a cross (x) under a limestone 24"x16"x5", 14" in the ground, marked "CC 5 HES747" on the NE face and a cross (x) on top at the exact corner point.
From which:
A cross (x) on a 6" Pine, bears N.65°31'W., 25 links, marked: CC 5 HES 747.
A cross (x) on a 5" Pine, bears N.32°25'E., 20 links, marked: CC 5 HES 747.

FOUND: 7/2004

Found stone, 18"x5", firmly set, 4" above ground with a cross (x) on top and "CC 5 HES747" visible on the NE face. As corner is in excellent condition, I leave the stone in place. Found no evidence of the record bearing trees.

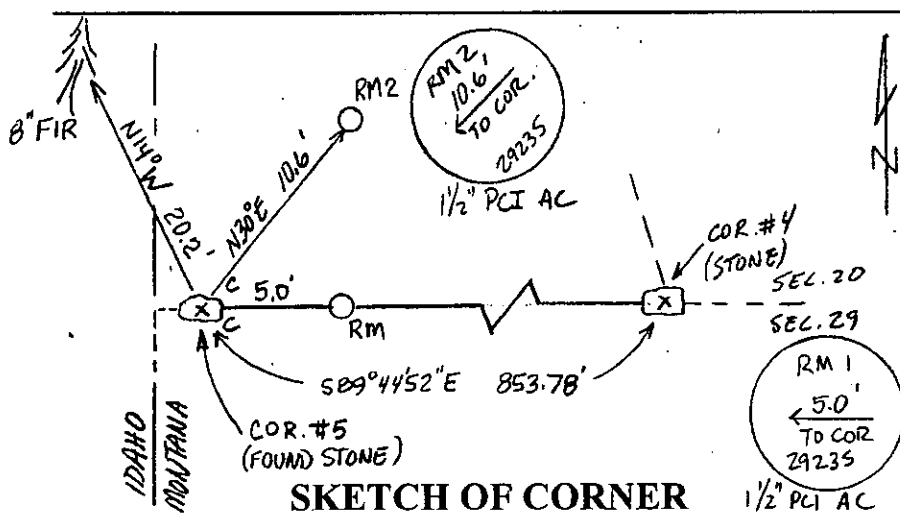
Place 6' tall galvanized post with "Survey Monument" decal 5" N. of the corner.

From which:

A 8" Fir, bears N.14°W., 20.2', marked: BT.
Set 5/8"x30" rebar with 1-1/2" PCI alum. cap, flush with ground, bears S.89°44'52"E., 5.0'.
Set 5/8"x30" rebar with 1-1/2" PCI alum. cap, flush with ground, bears N.30°E., 10.6'.

Paint blaze and 6" band and posted "Bearing Tree" and "Land Survey Monument" on bearing tree.

See Certificate of Survey on file at the Lincoln County Courthouse.



CERTIFICATION

I, Jason Culp
certify the information shown herein is true and correct.

Jason Culp
Signature Ground Party Chief

I, Richard A. Ainsworth
certify that this Corner Record correctly
represents work performed by me or under my
direction in compliance with the "Corner
Recordation Act" (70-22-101, et seq., M.C.A.)

Richard A. Ainsworth
Signature of Surveyor

Date: 7/2004 Reg. No. 2923S
Employer: Professional Consultants, Inc.

Office of Clerk and Recorder, County of LINCOLN. This "corner
record" was filed for record on 10-18-04
was noted on the cross-index plat and is assigned page No. 179991, in
book No. 10672 *Jeannie Dennis*
County Official

