

# CERTIFIED CORNER RECORDATION

Corner CC & 2, HES 747 T. 34 N. R. 34 W. P.M.M. LINCOLN County

**I. Record:**

1920 original record by Grant Higgins: From cor. 1, thence N0°02'E, 57.30 chains, to angle point which I establish for Cor. No. 2 and closing corner of this survey as follows:

Place a small stone marked with a cross (X) under a slate stone 24x15x5 ins., 14 ins. in the ground, marked CC 2 HES 747 on SE face and a cross (X) on top for the exact corner point, from which:

A cross (X) on a fir tree 4 ins. diam., bears S66°47'E, 35 lks. dist.

A cross (X) on a larch tree 8 ins. diam., bears N31°40'E, 82 lks. dist., each blazed and scribed CC 2 HES 747 BT.

Raise a mound of stone 4 ft. base, 2 ft. high, SE of this corner.

**II. Found a limestone fractured in two pieces, 12x9x5 ins., loose on the edge of an old logging road, mkd. "x" 2 H from which:**

A larch 23 ins. diam., bears N31°E, 54.12 ft. dist. mkd. with a healed face.

Cut into the larch bearing tree and found it marked 2 HES 747.

A fir 15 ins. diam., bears S66°E, 23.10 ft. dist., scribe marks visible.

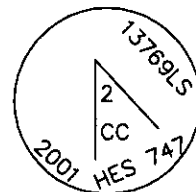
**III. At the intersection of the HES boundary and the Montana and Idaho state line determined by survey, set a 2 1/2 in. diam. by 30 in. long aluminum pipe, 28 ins. in the ground with a 3 1/4 in. diam. aluminum cap, in a collar of stone, marked as shown. From which the original bearing trees:**

A larch 23 ins. diam., bears N31°E, 54.6 ft. dist. mkd. with a healed face. (original bearing tree)

A fir 15 ins. diam., bears S70°E, 22.3 ft. dist. mkd. visible scribe marks. (original bearing tree)

Marked the original corner stone pieces with "AM" and buried it at the dist.-dist. intersection from the original bearing trees.

The amended closing corner bears S30°07'23"E, 1.03 ft. dist. from the new monument.



Set a 6 ft. galvanized steel guard post 3.0 ft. North and S30°E, with Property Boundary and Land Survey Monument decals attached. Attached Bearing Tree and Land Survey Monument signs to the bearing trees. Painted red bands around the bearing trees.

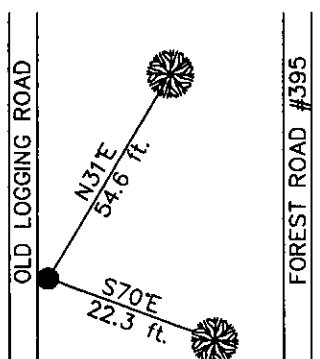
Date of Fieldwork: 8/07/2001

Survey crew: Steve Boyer, Tom Hommel

Magnetic declination: 20° East assumed

Equipment used: Hand compass and loggers tape

U.S. Forest Service, Supervisors Office, 1101 Hwy. 2 West, Libby, MT 59923 (406) 293-6211



SKETCH OF CORNER

NOT TO SCALE

**CERTIFICATION**

I, Steven A. Boyer 9750LS

certify the information shown herein is true.

*Steven A. Boyer*  
Signature Ground Survey Chief

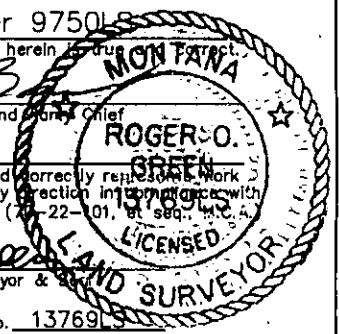
I, Roger O. Green

certify that this Corner Record correctly represents work performed by me or under my direction in compliance with the "Corner Recordation Act" (7-22-101, et seq., M.C.A.)

*Roger O. Green*  
Signature of Surveyor & Licensed Surveyor

Date: 08/07/2001 Reg. No. 13769LS

Employer: U. S. Forest Service



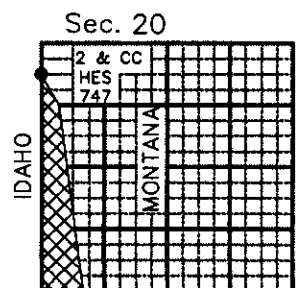
Office of Clerk and Recorder, County of Lincoln This "corner

record" was filed for record on Feb 19, 2002

was noted on the cross-index plat and is assigned page No. 10556, in

book No. \_\_\_\_\_

*Carol M. Cummins by RB*  
County Official



Cross Index No. CC & 2, HES 747 T. 34N. R. 34W. P.M., MT

Adopted July 1, 1981, Montana Board of Professional Engineers & Land Surveyors

• corner this sheet