

# CERTIFIED CORNER RECORDATION

Corner CC & 4, HES 747 T. 34 N. R. 34 W. P.M.M. LINCOLN County

## I. Record:

1920 original record by Grant Higgins: From cor. 3, thence S7°19'E, 62.19 chains, to angle and closing point on line between Secs. 20 and 29 which I establish for Cor. No. 4, of this survey as follows:

Place a small stone marked with a cross (X) under a limestone 24x14x10 ins., 14 ins. in the ground, marked CC 4 HES 747 on NW face and a cross (X) on top for the exact corner point, from which:

A cross (X) on a pine tree 5 ins. diam., bears N32°25'E, 20 lks. dist.

A cross (X) on a pine tree 6 ins. diam., bears N65°31'W, 23 lks. dist., each blazed and scribed CC 4 HES 747 BT.

Raise a mound of stone 4 ft. base, 2 ft. high on this course 3 1/4 ft dist.

## II. Found a limestone, 12x12 ins., projecting 12 ins. above the ground, firmly set, mkd. 4 HES 747 CC on N face from which:

A pine stump and down snag 8 ins. diam., bears N65°W, 15.0 ft. dist. mkd. 4 HES 747 BT CC.

Mound of stone bears North, 2.0 ft. dist.

## III. Establish 2 new bearing trees:

A fir 13" diam., bears N19°E, 19.7 ft. dist., mrkd. 4 CC HES 747 BT.

A fir 13" diam., bears S45°E, 3.45 ft. dist., mrkd. 4 CC HES 747 BT.

Set a 6 ft. galvanized steel guard post 3.0 ft. N7°W, with Property Boundary and Land Survey Monument decals attached. Attached Bearing Tree and Land Survey Monument signs to the bearing trees. Painted red bands around the bearing trees.

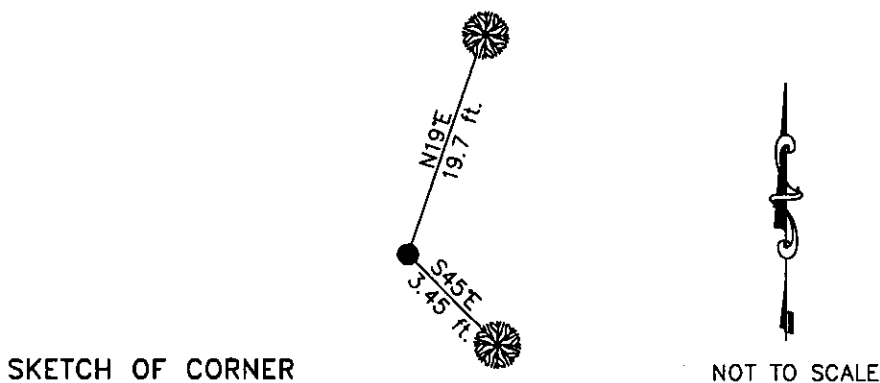
Date of Fieldwork: 6/21/2001

Survey crew: Steve Boyer, Tom Hommel

Magnetic declination: 20° East assumed

Equipment used: Hand compass and loggers tape

U.S. Forest Service, Supervisors Office, 1101 Hwy. 2 West, Libby, MT 59923 (406) 293-6211



CERTIFICATION

I, Steven A. Boyer 975018 certify the information shown here is true and correct.

Steven A. Boyer Signature of Granting Party Chief

I, Roger O. Green certify that this Corner Record correctly reflects the work performed by me or under my direction in accordance with the Corner Recordation Act (70-22-101 et seq., M.C.A.)

Roger O. Green Signature of Surveyor

Date: 06/21/2001 Reg. No. 137628

Employer: U. S. Forest Service

Office of Clerk and Recorder, County of Lincoln. This "corner

record" was filed for record on Feb. 19, 2002

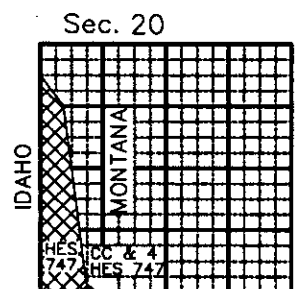
was noted on the cross-index plat and is assigned page No. 10555, in

book No. Coal M. Cummings by RB

County Official

Cross Index No. CC & 4, HES 747 T. 34N. R. 34W. P.M., MT

Adopted July 1, 1981, Montana Board of Professional Engineers & Land Surveyors



• corner this sheet