

# CERTIFIED CORNER RECORDATION

Corner No. 3, HES 747 T. 34 N. R. 34 W. P.M.M. LINCOLN County

## I. Record:

1920 original record by Grant Higgins: From cor. 2 and closing corner, thence S30°07'E, 10.02 chains, to listing Cor. No. 3, marked and described by the District Forester which I now destroy and in it's place establish cor. No. 3 of this survey as follows:

Place a small stone marked with a cross (X) under a limestone 24x14x12 ins., 14 ins. in the ground, marked 3 HES 747 on SW face and a cross (X) on top for the exact corner point, from which:

- A cross (X) on a larch tree 8 ins. diam., bears S65°06'W, 31 lks. dist.
- A cross (X) on a fir tree 9 ins. diam., bears N56°40'E, 6 lks. dist., each blazed and scribed 3 HES 747 BT.

Raised a mound of stone 4 ft. base, 2 ft. high, SW of corner.

## II. Found a stone, 7x12 ins., projecting 12 ins. above the ground mkd. 3 HES 747 on SW face and an "X" on top from which:

- The rotten remains of a fir, bears N57°E, 3.9 ft. dist. mkd. 3 HES 747.
- A larch stump, 12 ins. diam., bears S65°W, 20.5 ft. dist., mkd. with visible ax marks.

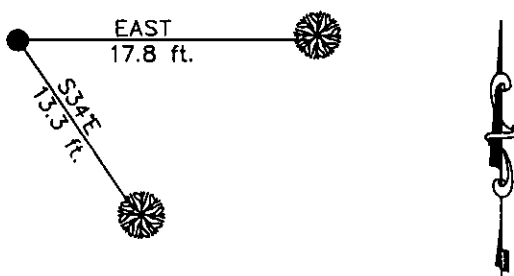
## III. Establish 2 new bearing trees:

- A fir 6" diam., bears East, 17.8 ft. dist., mrkd. 3 HES 747 BT.
- A fir 7" diam., bears S34°E, 13.3 ft. dist., mrkd. 3 HES 747 BT.

Set a 6 ft. galvanized steel guard post 3.0 ft. N30°W and S7°E, with Property Boundary and Land Survey Monument decals attached. Attached Bearing Tree and Land Survey Monument signs to the bearing trees. Painted red bands around the bearing trees.

Date of Fieldwork: 6/21/2001  
Survey crew: Steve Boyer, Tom Hommel  
Magnetic declination: 20° East assumed  
Equipment used: Hand compass and loggers tape

U.S. Forest Service, Supervisors Office, 1101 Hwy. 2 West, Libby, MT 59923 (406) 293-6211



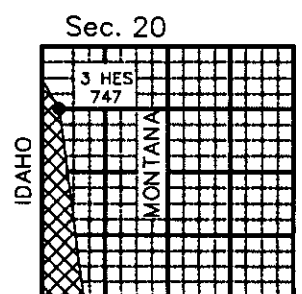
SKETCH OF CORNER

NOT TO SCALE

## CERTIFICATION

I, Steven A. Boyer 9758,  
certify the information shown herein is true and correct.  
Steven A. Boyer  
Signature of Group Chief  
I, Roger O. Green,  
certify that this Corner Record correctly reflects the work  
performed by me or under my direction in compliance with  
the "Corner Recordation Act" (70-22-101, et seq., M.C.A.).  
Roger O. Green  
Signature of Surveyor  
Date: 06/21/2001 Reg. No. 13789LS  
Employer: U. S. Forest Service

Office of Clerk and Recorder, County of Lincoln This "corner  
record" was filed for record on Feb 19, 2002  
was noted on the cross-index plat and is assigned page No. 10554, in  
book No. Coral M. Cumming by RB  
County Official



Cross Index No. 3, HES 747 T. 34N. R. 34W. P.M., MT

Adopted July 1, 1981, Montana Board of Professional Engineers & Land Surveyors

• corner this sheet