

# CERTIFIED CORNER RECORDATION

Corner CC & 1 HES 749 T 34 N. R. 34 W. P.M.M. LINCOLN County

## I. Record:

1917 original record by E. R. Johnson: Beginning at the closing point on the Montana-Idaho boundary, which I establish for Cor. No. 1 and closing corner of this survey as follows:

Set a small stone marked with a cross (X) under a sandstone 28x10x6 ins., 18 ins. in the ground, marked CC 1 HES 749 on NE face and a cross (X) on top for the exact corner point, from which:

A cross (X) on a black pine tree 9 ins. diam., bears N63°00'E, 52 lks. dist.

A cross (X) on a larch tree 9 ins. diam., bears S45°45'E, 83 lks. dist., each blazed and scribed 1 HES 747 BT.

Raise a mound of earth 4 ft. base, 2 ft. high, NE of corner.

## II. Found a stone, 7x4 ins., projecting 7 ins. above the ground, firmly set, mkd. CC 1 HES 749 on NE face and an "X" on top from which:

A larch 27 ins. diam., bears S45°E, 54.3 ft. dist. mkd. with a healed face.

Rotten remains, bears N63°E, 34.3 ft. dist., mkd. with a visible "9".

## III. Establish 1 new bearing tree:

A fir 18" diam., bears N58°E, 71.5 ft. dist., mkd. 1 CC HES 749 BT.

Set a 6 ft. galvanized steel guard post 3.0 ft. south, with Property Boundary and Land Survey Monument decals attached. Attached Bearing Tree and Land Survey Monument signs to the bearing trees. Painted red bands around the bearing trees.

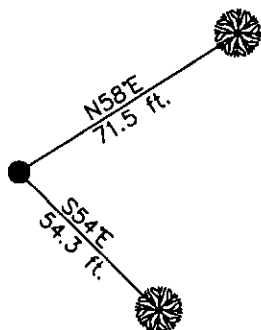
Date of Fieldwork: 6/21/2001

Survey crew: Steve Boyer, Tom Hommel

Magnetic declination: 20° East assumed

Equipment used: Hand compass and loggers tape

U.S. Forest Service, Supervisors Office, 1101 Hwy. 2 West, Libby, MT 59923 (406) 293-6211



SKETCH OF CORNER

NOT TO SCALE

## CERTIFICATION

I, Steven A. Boyer 9750LS  
certify the information shown herein to be true and correct.

Signature of Party Chief  
Roger O. Green  
I, Roger O. Green 10769LS  
certify that this Corner Record, corrected for monuments, work performed by me or under my direct supervision complies with the "Corner Recordation Act" (M.C. 22-101, et seq. M.C.A.)  
Signature of Surveyor  
Roger O. Green 10769LS  
LICENSED SURVEYOR

Date: 06/21/2001 Reg. No. 13789LS

Employer: U. S. Forest Service

Office of Clerk and Recorder, County of Lincoln. This "corner

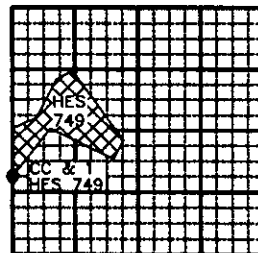
record" was filed for record on Feb 19, 2002

was noted on the cross-index plat and is assigned page No. 10553, in

book No. Coral M. Cumming By

County Official DOB

Sec. 17



• corner this sheet

Cross Index No. CC & 1 HES 749 T. 34N. R. 34W. P.M., MT

Adopted July 1, 1981, Montana Board of Professional Engineers & Land Surveyors