

CERTIFIED CORNER RECORDATION

Corner No. 8, HES 749 T. 34 N. R. 34 W. P.M.M. LINCOLN County

I. Record:

1917 original record by E. R. Johnson: From cor. No. 7, thence N64°00'W, across broken NE slope through scattering timber and brush. To angle point which I establish for Cor. No. 8 of this survey as follows:

Set a small, stone marked with a cross (X), under a quartzite stone 26x8x4 ins., 16 ins. in the ground, marked 8 HES 749 on N. face and a cross (X) on top for the exact corner point, from which:

A cross (X) on a fir tree 10 ins. diam., bears S64°00'W, 29 lks. dist.

A cross (X) on a larch tree 10 ins. diam., bears N32°00'E, 25 lks. dist., each blazed and scribed 8 HES 747 BT.

Raise a mound of earth 4 ft. base, 2 ft. high, N. of corner.

II. Found a stone, 5x11 ins., projecting 12 ins. above the ground, firmly set, mkd. 8 HES 749 on N. face and an "X" on top from which:

A fir 22 ins. diam., bears S64°W, 17.7 ft. dist. mkd. with a healed face.

Larch stump 22 ins. diam., bears N32°E, 16.3 ft. dist., mkd. with a visible face scar.

III. Establish 1 new bearing tree:

A larch 22" diam., bears N27°W, 9.0 ft. dist., mkd. 8 HES 749 BT.

Set a 6 ft. galvanized steel guard post 3.0 ft. S64°E and S38°W, with Property Boundary and Land Survey Monument decals attached. Attached Bearing Tree and Land Survey Monument signs to the bearing trees. Painted red bands around the bearing trees.

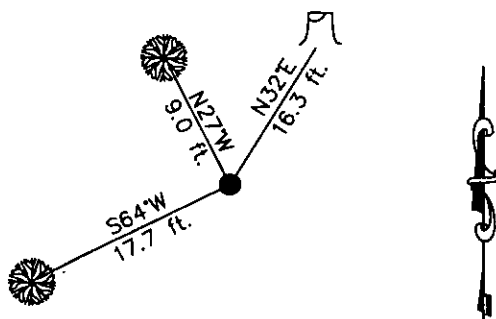
Date of Fieldwork: 6/25/2001

Survey crew: Steve Boyer, Tom Hommel

Magnetic declination: 20' East assumed

Equipment used: Hand compass and loggers tape

U.S. Forest Service, Supervisors Office, 1101 Hwy. 2 West, Libby, MT 59923 (406) 293-6211



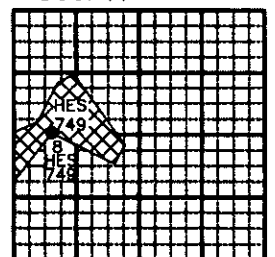
SKETCH OF CORNER

NOT TO SCALE

CERTIFICATION

I, Steven A. Boyer 97892S
certify the information shown herein is correct.
Steven A. Boyer
Signature Ground Party
I, Roger O. Green
certify that this Corner Record correctly represents work performed by me or under my direction in accordance with the "Corner Recordation Act" (70-22-101, et seq., M.C.A.)
Roger O. Green
Signature of Surveyor
Date: 06/25/2001 Reg. No. 13769LS
Employer: U. S. Forest Service

Sec. 17



• corner this sheet

Office of Clerk and Recorder, County of Lincoln. This "corner

record" was filed for record on Feb 19, 2002

was noted on the cross-index plat and is assigned page No. 10552, in

book No. Coral M. Cumming by DB
County Official

Cross Index No. 8, HES 749 T. 34N. R. 34W. P.M., MT

Adopted July 1, 1981, Montana Board of Professional Engineers & Land Surveyors