

CERTIFIED CORNER RECORDATION

Corner No. 7, HES 749 T. 34 N. R. 34 W. P.M.M. LINCOLN County

I. Record:

1917 original record by E. R. Johnson: From cor. No. 6, thence S28°42'W, across rolling ground. To angle point which I establish for Cor. No. 7 of this survey as follows:

Set a small stone marked with a cross (X), under a quartzite stone 28x8x4 ins., 14 ins. in the ground, marked 7 HES 749 on N face and a cross (X) on top for the exact corner point, from which:

A cross (X) on a fir tree 10 ins. diam., bears N35°45'W, 13 lks. dist.

A cross (X) on a larch tree 10 ins. diam., bears S35°00'W, 11 lks. dist., each blazed and scribed 7 HES 747 BT.

Raise a mound of earth and stone 4 ft. base, 2 ft. high, NE of corner.

II. Found a stone, 6x6 ins., projecting 10 ins. above the ground, firmly set, mkd. 7 HES 749 on N face and an "X" on top from which:

A larch 17 ins. diam., bears S28°W, 7.15 ft. dist. mkd. with a healed face.

Fir stump 19 ins. diam., bears N36°W, 7.8 ft. dist. (Rec. 8.6 ft.), no visible marks.

III. Establish 1 new bearing tree:

A cedar 13" diam., bears S57°E, 14.0 ft. dist., mkd. 7 HES 749 BT.

Set a 6 ft. galvanized steel guard post 3.0 ft. N64°W, with Property Boundary and Land Survey Monument decals attached. Attached Bearing Tree and Land Survey Monument signs to the bearing trees. Painted red bands around the bearing trees.

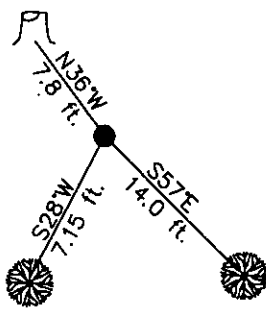
Date of Fieldwork: 6/25/2001

Survey crew: Steve Boyer, Tom Hommel

Magnetic declination: 20° East assumed

Equipment used: Hand compass and loggers tape

U.S. Forest Service, Supervisors Office, 1101 Hwy. 2 West, Libby, MT 59923 (406) 293-6211



SKETCH OF CORNER

NOT TO SCALE

CERTIFICATION

I, Steven A. Boyer 95301S
certify the information shown herein is true and correct.
Steven A. Boyer
Signature of Surveyor
I, Roger O. Green
certify that this Corner Record correctly represents work performed by me or under my direction in compliance with the "Corner Recordation Act" (70-22-101, et seq., M.C.A.)
Roger O. Green
Signature of Surveyor
ROGER O. GREEN
LICENSED SURVEYOR

Date: 06/25/2001 Reg. No. 13769LS

Employer: U. S. Forest Service

Office of Clerk and Recorder, County of Lincoln This "corner

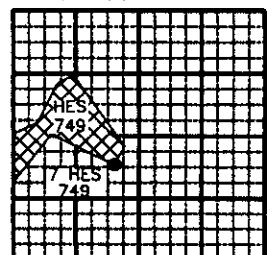
record" was filed for record on Feb. 19, 2002

was noted on the cross-index plat and is assigned page No. 10551, in

book No. Coral M. Cumming by

County Official POB

Sec. 17



Cross Index No. 7, HES 749 T. 34N. R. 34W. P.M., MT

Adopted July 1, 1981, Montana Board of Professional Engineers & Land Surveyors

• corner this sheet