

CERTIFIED CORNER RECORDATION

Corner **HES 1065** Sec. **28** T. **34N** R. **34W** P.M., MT Lincoln County
Cor. 9

- I. 1921 Homestead Entry No. 1065 by Grant Higgins: To listing cor. No. 7, mkd. and witnessed as described by the District Forester. I destroy the listing cor. and its accessories and in its place, establish cor. No. 9 of this survey, as follows: Place a small stone, mkd. with a cross (x) under a granite stone, 24x10x9 ins., 14 ins. in the ground, mkd. "9 HES 1065", on NW face and a cross (x) on top for the exact corner point.

Established two bearing trees:

- A cross (x) on a pine tree, 10 ins. diam., bears S0°32'E, 10 lks. dist.
- A cross (x) on a pine tree, 5 ins. diam., bears N07°28'W, 34 lks. dist.

Each bearing tree is blazed and scribed "9 HES 1065 BT".
Raise a mound of earth and stone, 4.0 ft. base, 2.0 ft. high, NW of the corner.

- II. Found a 4x9 in. stone, protruding 7 ins. above the ground, firmly set, mkd. "9 HES 1065" on the NW face, with an "x" on top. Witnessed by a mound of stone, NW., 2.0 ft. of the stone, and one of the original bearing trees.

from which:

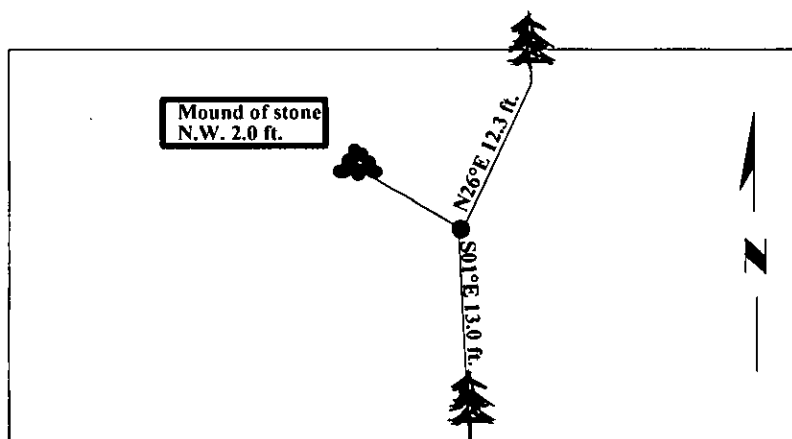
- A pine, 20 ins. diam. bears S01°E, 13.0 ft. dist., with visible scribe. (Rec.-6.6 ft.)

- III. Established one new bearing tree:

- A hemlock, 10 ins. diam., bears N26°E, 12.3 ft. dist., mkd. "9 HES 1065 BT".

Painted bearing trees and attached Land Survey Monument and Bearing Tree signs.

Magnetic Declination: 20° East.



SKETCH OF CORNER

CERTIFICATION

I, Mark Federman
certify the information shown herein is true and correct.

I, Steven A. Boyer
certify that this Corner Record correctly represents work performed by me or under my direction in compliance with the "Corner Recordation Act" (76-22-104, et seq., M.C.A.)

Signature of Surveyor & Seal

Date: 08/12/98

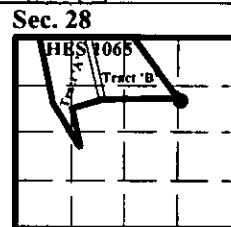
Reg. No.: 9750LS

Employer: U.S. FOREST SERVICE

STEVEN A. BOYER
9750LS
REGISTERED
LAND SURVEYOR

Office of Clerk and Recorder, County of Lincoln. This "corner record" was filed for record on 10/19/98 was noted on the cross-index plat and is assigned page No. 10247, in book No.

Coral M. Cummings by OLB
County Official



● - corner this sheet

Index No.

Cross HES 1065 Cor. 9 T. 34N R. 34W P.M., MT