

# CERTIFIED CORNER RECORDATION

Corner **HES 1132** Sec. **28** T. **34N** R. **34W** P.M., MT **Lincoln** County  
Cor. 3

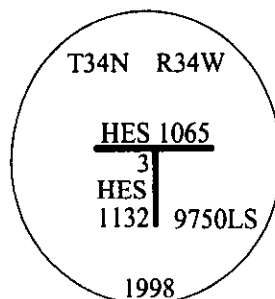
- I. 1922 Homestead Entry No. 1132 by J.F. Pfau: To listing cor. No. 6, mkd. and witnessed as described by the District Forester. I destroy the listing cor. and it's accessories and in it's place, establish cor. No. 3 of this survey, as follows: Place a small stone, mkd. with a cross (x) under a quartzite stone, 24x12x6 ins., 14 ins. in the ground, mkd. "3 HES 1132", on SW face and a cross (x) on top for the exact corner point.

Established two bearing trees:

A cross (x) on a spruce tree, 30 ins. diam., bears S54°W, 8 lks. dist. mkd. "3 HES 1132 BT".  
A cross (x) on a spruce tree, 6 ins. diam., bears S84°W, 29 lks. dist., mkd. "3 HES 1132 BT".

Raise a mound of earth, 4.0 ft. base, 2.0 ft. high, SW of the corner.

- II. Found a 14x6 in. leaning stone, protruding 5 ins. above the ground, mkd. "3 HES 1132" on the SW face, with an "x" on top. No evidence of the bearing trees.
- III. At the corner position, as determined by returning stone to upright position, set in its place a 2 1/2 in. diam. x 30 in. long aluminum pipe, 24 ins. in the ground, with a 3 1/4 in. diam. aluminum cap mkd. as shown.



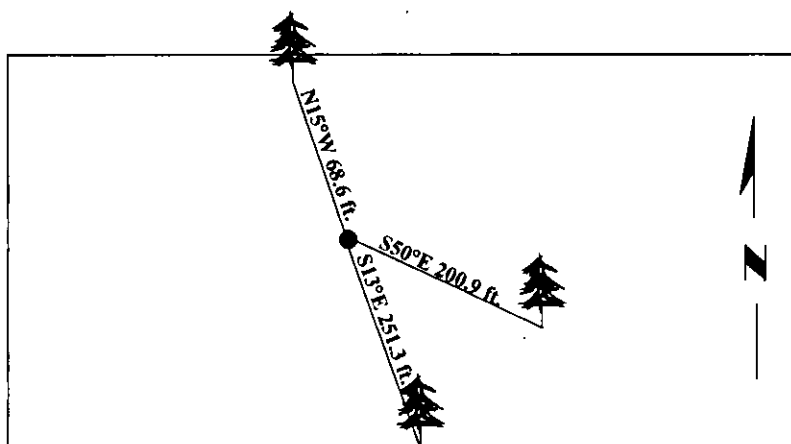
Established three new bearing trees:

A spruce, 12 ins. diam., bears S13°E, 251.3 ft. dist., mkd. "3 HES 1132 BT".  
A spruce, 16 ins. diam., bears S50°E, 200.9 ft. dist., mkd. "3 HES 1132 BT".  
A larch, 12 ins. diam., bears N15°W, 68.6 ft. dist., mkd. "3 HES 1132 BT".

Buried original stone alongside the aluminum pipe.

Painted bearing trees and attached Land Survey Monument and Bearing Tree signs.

Magnetic Declination: 20° East.



SKETCH OF CORNER

## CERTIFICATION

I, **Mark Federman**

certify the information shown herein is true and correct.

*Mark Federman*

I, **Steven A. Boyer**

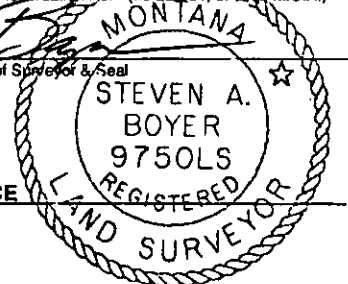
certify that this Corner Record correctly represents work performed by me or under my direction in compliance with the "Corner Recordation Act" (70-22-101, et seq., M.C.A.)

*Steven A. Boyer*  
Signature of Surveyor & Seal

Date: **08/13/98**

Reg. No.: **9750LS**

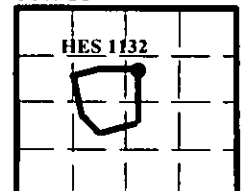
Employer: **U.S. FOREST SERVICE**



Office of Clerk and Recorder, County of Lincoln. This "corner record" was filed for record on 10/19/98 was noted on the cross-index plat and is assigned page No. 10246 in book No. \_\_\_\_\_

*Coral M. Cummings*  
County Official

Sec. 28



• - corner this sheet

Index No.

Cross **HES 1132 Cor. 3** T. **34N** R. **34W** P.M., MT