

# CERTIFIED CORNER RECORDATION

Corner **HES 1132** Sec. **28** T. **34N** R. **34W** P.M., MT **Lincoln** County  
Cor. 4

- I. 1922 Homestead Entry No. 1132 by J.F. Pfau: To listing cor. No. 5, mkd. and witnessed as described by the District Forester. I destroy the listing cor. and it's accessories and in it's place, establish cor. No. 4 of this survey, as follows: Place a small stone, mkd. with a cross (x) under a sandstone, 30x12x8 ins., 20 ins. in the ground, mkd. "4 HES 1132", on NW face and a cross (x) on top for the exact corner point.

Established two bearing trees:

- A cross (x) on a white pine tree, 24 ins. diam., bears S74°20'W, 35 lks. dist.
- A cross (x) on a tamarack tree, 24 ins. diam., bears N64°W, 23 lks. dist.

Each bearing tree is blazed and scribed "4 HES 1132 BT".  
Raise a mound of earth, 4.0 ft. base, 2.0 ft. high, NW of the corner.

- II. Found a 8x8 in. stone, protruding 12 ins. above the ground, firmly set, mkd. "4 HES 1132" on the NW face, with an "x" on top and witnessed by the remains of both original bearing trees.

from which:

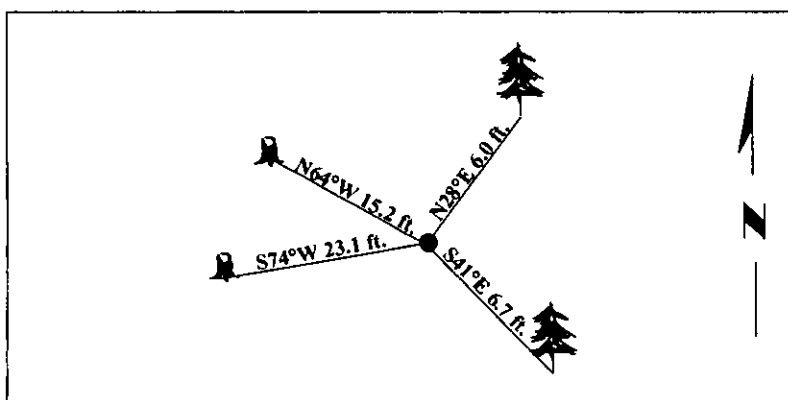
- A rotting stump, bears S74°W, 23.1 ft. dist., with visible scribe. (record)
- A rotting stump, bears N64°W, 15.2 ft. dist., with visible scribe. (record)

- III. Established two new bearing trees:

- A spruce, 6 ins. diam., bears N28°E, 6.0 ft. dist., mkd. "4 HES 1132 BT".
- A fir, 7 ins. diam., bears S41°E, 6.7 ft. dist., mkd. "4 HES 1132 BT".

Painted bearing trees and attached Land Survey Monument and Bearing Tree signs.

Magnetic Declination: 20° East.

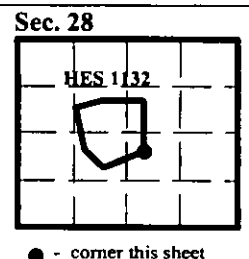


SKETCH OF CORNER

CERTIFICATION	
I. <u>Mark Federman</u>	certify the information shown herein is true and correct.
<i>Mark Federman</i>	
I. <u>Steven A. Boyer</u>	certify that this Corner Record correctly represents work performed by me or under my direction in compliance with the Corner Recordation Act (70-22-101, et seq., M.C.A.)
<i>Steven A. Boyer</i>	
Date: <u>08/13/98</u>	Signature of Surveyor & Seal
Reg. No.: <u>9750LS</u>	
Employer: <u>U.S. FOREST SERVICE</u>	

Office of Clerk and Recorder, County of Lincoln. This "corner record" was filed for record on 10/19/98 was noted on the cross-index plat and is assigned page No. 10245 in book No.                     

*Coral M. Cummings By ALB*  
County Official



Index No.

Cross **HES 1132 Cor. 4** T. **34N** R. **34W** P.M., MT