

CERTIFIED CORNER RECORDATION

Corner **HES 1132 Cor. 6** Sec. **28** T. **34N** R. **34W** P.M., MT **Lincoln** County
HES 1065 Cor. 5

I. 1921 Homestead Entry No. 1065 by Grant Higgins: To listing cor. No. 3, mkd. and witnessed as described by the District Forester. I destroy the listing cor. and its accessories and in its place, establish cor. No. 5 of this survey, as follows: Place a small stone, mkd. with a cross (x) under a sandstone, 24x11x8 ins., 14 ins. in the ground, mkd. "5 HES 1065", on NW face and a cross (x) on top for the exact corner point. Established two bearing trees and raise a mound of earth 4.0 ft. base, 2.0 ft. high NW.

1922 Homestead Entry No. 1132 by J.F. Pfau: Intersect cor. No. 5 of accepted HES No. 1065, which is a sandstone, 10x10 ins., 8 ins. above ground, mkd. and witnessed as described by the surveyor general, identical in point with listing cor. No. 3, which, with its accessories, was destroyed in the survey of HES No. 1065. I adopt this cor. of cor. No. 6 of this survey, and mark it "6 HES 1132" on the NE face. The cross (x) on stone is the exact cor. point. Established two new bearing trees and raise a mound of stone 4.0 ft. base, 2.0 ft. high, NE of the corner.

1980 U.S.F.S. Certified Corner Recordation by Thomas C. Hill, No. 5612S: Found a stone, 24x10 ins., 6 ins. above the ground, slightly pushed over, mkd. with an "x" on top, "5 HES 1065" and "6 HES 1132" and witnessed by the remains of the 1922 bearing trees. Established one new bearing tree and painted the "x" on the stone, with red paint.

II. Found a 11x6 in. stone, protruding 12 ins. above the ground, firmly set, mkd. "6 HES 1132" on top of stone, and "5 HES 1065" on NW face, with an "x" chiseled on top and witnessed by the remains of one 1921 and one 1922 and the 1980 bearing tree.

from which:

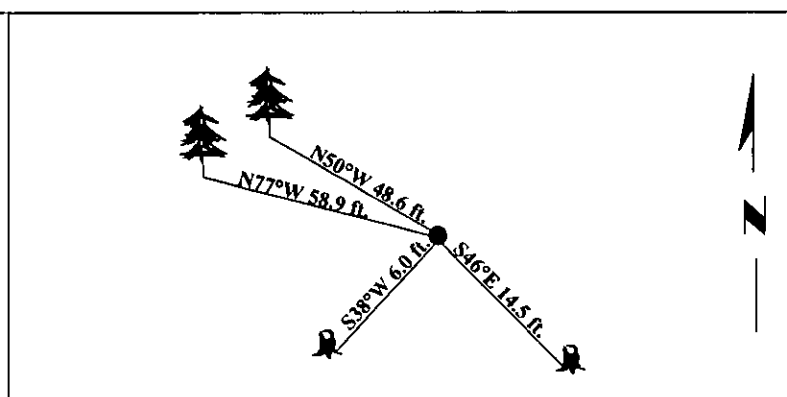
A cedar stump, 30 ins. diam., bears S46°E, 14.5 ft. dist., with visible scribe. (1922-Record)
A rotten spruce stump, out of place, bears S38°W, 6.0 ft. dist., "1065" visible. (1921-Record-S20°06'W)
A cedar, 16 ins. diam., bears N50°W, 48.6 ft. dist., with visible scribe. (1980-record)

III. Established one new bearing tree:

A cedar, 16 ins. diam., bears N77°W, 58.9 ft. dist., mkd. "6 HES 1132 BT".

Painted stone and bearing trees red and attached Land Survey Monument and Bearing Tree signs.

Magnetic Declination: 20° East.

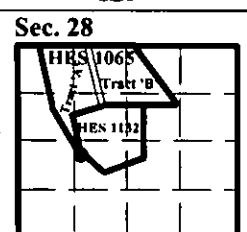


SKETCH OF CORNER

CERTIFICATION	
I. <u>Mark Federman</u>	certify the information shown herein is true and correct.
I. <u>Steven A. Boyer</u>	certify that this Corner Record correctly represents work performed by me or under my direction in compliance with the "Corner Recordation Act" (70-22-101, et seq., M.C.A.)
Date: <u>08/17/98</u>	Signature of Surveyor & Seal
Reg. No.: <u>9750LS</u>	
Employer: <u>U.S. FOREST SERVICE</u>	

Office of Clerk and Recorder, County of Lincoln. This "corner record" was filed for record on 10/19/98 was noted on the cross-index plat and is assigned page No. 10243 in book No.

Coral M. Cummings
County Official



• - corner this sheet

Index No.

Cross **HES 1132 Cor. 6** T. **34N** R. **34W** P.M., MT
HES 1065 Cor. 5